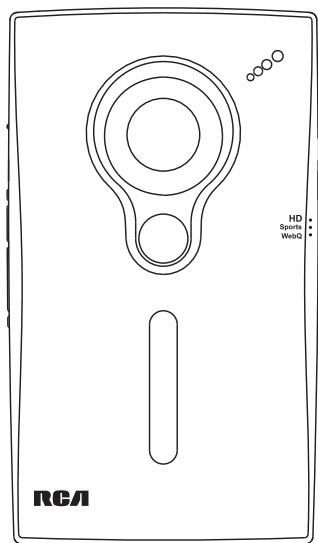




## user **manual**

---

EZ209HD  
EZC209HD  
EZ229HD



It is important to read this user manual prior to using your new product for the first time.

## FCC information

### FCC statement

This device complies with part 15 of the FCC rules. Operation is subject to the following two conditions: (1) This device may not cause harmful interference, and (2) This device must accept any interference received including interference which may cause undesired operation.

This equipment has been tested and found to comply with the limits for a Class B digital device, pursuant to Part 15 of the FCC Rules. These limits are designed to provide reasonable protection against harmful interference in a residential installation. This equipment generates, uses and can radiate radio frequency energy and, if not installed and used in accordance with the instructions, may cause harmful interference to radio communications. However, there is no guarantee that interference will not occur in a particular installation.

If this equipment does cause harmful interference to radio or television reception, which can be determined by turning the equipment off and on, the user is encouraged to try to correct the interference by one or more of the following measures:

- Reorient or relocate the receiving antenna.
- Increase the separation between the equipment and receiver.
- Connect the equipment into an outlet on a circuit different from that to which the receiver is connected.
- Consult the dealer or an experienced radio / TV technician for help.

In accordance with FCC requirements, changes or modifications not expressly approved by manufacturer could void the user's authority to operate this product.

### Manufacturer/Responsible Party

Audiovox Electronics Corp.,  
150 Marcus Blvd., Hauppauge, NY 11788  
1-317-810-4880

(Please note this phone number is for regulatory matters only. No technical or product support is available via this number.)

### IMPORTADOR PARA MEXICO:

Audiovox Mexico, S. de R.L. de C.V.  
Ejercito Nacional 436 Piso 3  
Col. Chapultepec Morales C.P. 11570  
Mexico, D.F.  
AME0712174Y4

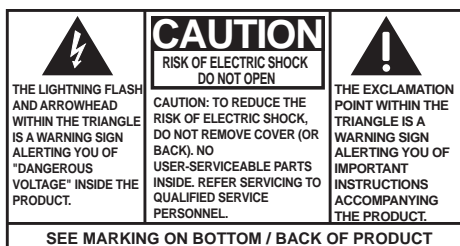
### EXPORTADOR:

Audiovox Electronics Corp  
150 Marcus Blvd, Hauppauge, NY11788.

This Class B digital apparatus complies with Canadian ICES-003.  
Cet appareil numérique de la classe B est conforme à la norme NMB-003 du Canada.



## Safety information



**WARNING:** TO PREVENT FIRE OR ELECTRICAL SHOCK HAZARD, DO NOT EXPOSE THIS PRODUCT TO RAIN OR MOISTURE.

### Important battery information

Warning: Your product contains a battery and charging system which is designed to work in temperatures that do not exceed 50°C (122°F). Leaving this product in a closed automobile or the trunk of an automobile where temperatures may exceed 50°C may result in permanent battery damage, fire, or explosion. Please remove your product from the automobile when you exit, do not place your product in the trunk of your automobile, and do not leave your product in any location where temperatures may exceed 50°C.

**Use only the specific chargers which were packaged with the product. Use of another charger may present a risk of fire or explosion.**

### Precautions for the player

- Do not use the unit immediately after transportation from a cold place to a warm place; condensation problems may result.
- Avoid shock to the unit.
- Do not store the unit near fire, places with high temperature or in direct sunlight. Exposure to direct sunlight or extreme heat (such as inside a parked car) may cause damage or malfunction.
- Do not expose to rain or moisture.
- Do not operate or store unit in places with frequent static electricity or electrical noise (e.g. speaker, TV set).
- Clean the unit with a soft cloth or a damp chamois leather. Never use solvents.
- The unit must only be opened by qualified personnel.

# Contents

<b>FCC information</b>	
FCC statement .....	2
<b>Safety information</b>	
Important battery information .....	3
Precautions for the player .....	3
<b>Contents</b>	
<b>End user license agreement</b>	
End user license agreement .....	5
<b>Getting started</b>	
1. Content of the box .....	7
2. Charging the battery .....	7
3. Inserting microSD memory card .....	7
4. Turning on the camcorder .....	7
<b>General controls</b>	
Panel controls .....	8
Operation modes .....	9
<b>Video mode</b>	
Recording videos .....	10
Recording quality .....	10
Quality settings .....	10
<b>Photo mode</b>	
Taking photos .....	11
<b>Playback mode</b>	
Playing back recordings .....	12
<b>Deleting</b>	
Deleting recordings .....	13
<b>Menu settings</b>	
Using the camcorder menu .....	13
Menu options and settings .....	13
<b>Connecting to external devices</b>	
Viewing videos on TV .....	14
Recording videos to VHS tape or DVD .....	14
<b>Managing videos on your computer</b>	
Computer system requirements .....	15
Connecting to a PC .....	15
About RCA Memory Manager .....	15
Viewing videos on PC .....	15
<b>Additional information</b>	
Tips and troubleshooting .....	16
Product registration .....	16
For your records .....	16
Service Information .....	16
Technical specifications .....	16
Copyright warning .....	16
Back up your data .....	17
Visiting RCA website .....	17
Limited warranty .....	18

# End user license agreement

## End user license agreement

THIS END USER LICENSE AGREEMENT (THIS "EULA") IS A LEGAL AGREEMENT BETWEEN YOU AND AUDIOVOX CORPORATION AND, AS APPLICABLE, ANY AUDIOVOX SUBSIDIARY, AS DEFINED BELOW (COLLECTIVELY "AUDIOVOX"), FOR THE RCA BRANDED PORTABLE DIGITAL AUDIO/VIDEO DEVICE APPLICATION/DRIVER SOFTWARE PROGRAM WHICH MAY INCLUDE ASSOCIATED SOFTWARE COMPONENTS, SOFTWARE LICENSED BY AUDIOVOX FROM THIRD PARTIES ("LICENSORS") AND ASSOCIATED DOCUMENTATION, IF ANY (COLLECTIVELY, THE "PROGRAM"). THIS EULA CONTAINS IMPORTANT LEGAL LIMITATIONS, RESTRICTIONS AND DISCLAIMERS, AND ALSO SPECIFIES THE DURATION OF YOUR LICENSE.

BY INSTALLING THE PROGRAM OR CLICKING ON THE ACCEPTANCE BUTTON OF THE PROGRAM, COPYING OR OTHERWISE USING THE PROGRAM, YOU ACKNOWLEDGE AND AGREE THAT YOU HAVE READ THIS EULA, UNDERSTAND IT, AND AGREE TO BE BOUND BY ITS TERMS AND CONDITIONS. THIS PROGRAM IS PROTECTED BY COPYRIGHT LAWS AND INTERNATIONAL COPYRIGHT TREATIES, AS WELL AS OTHER INTELLECTUAL PROPERTY LAWS AND TREATIES. YOU MAY USE THE PROGRAM ONLY IN ACCORDANCE WITH THIS EULA, AND ANY SUCH USE IS HEREBY UNDERSTOOD TO BE CONDITIONAL UPON YOUR SPECIFIC AGREEMENT TO THE UNMODIFIED TERMS SET FORTH HEREIN. IF YOU DO NOT AGREE WITH ALL OF THE TERMS OF THIS EULA, CLICK ON THE REJECTION BUTTON AND/OR DO NOT INSTALL THE PROGRAM AND/OR DO NOT USE THE PROGRAM.

### 1. LICENSE

- (a) Under this EULA, you are granted a non-exclusive, non-sublicenseable, non-assignable and non-transferable (except as expressly set forth below) license (i) to use and install the Program on a single workstation, and (ii) to make one (1) copy of the Program into any machine-readable form for backup of the Program, provided the copy contains all of the original Program's proprietary notices.
- (b) You may transfer the Program and license to another party only as a part of the RCA branded Portable Digital Audio/Video Device ("A/V Device"), and only if the other party agrees to accept the terms and conditions of this EULA. If you transfer the Program, you must at the same time either transfer all copies to the same party or destroy any copies not transferred.
- (c) The terms of this EULA will govern any software upgrades or updates provided by AUDIOVOX that replace and/or supplement the original Program, unless such upgrade or update is accompanied by separate license terms and conditions in which case the terms of that separate license will govern. You acknowledge and agree that AUDIOVOX may automatically download upgrades or updates to the Program software to your computer in order to

update, enhance, and/or further develop the Program.

### 2. LICENSE RESTRICTIONS

- (a) Except for the licenses expressly granted to you in this EULA, no other licenses or rights are granted or implied.
- (b) You may not (i) make the Program available over a network where it could be used by multiple computers at the same time; (ii) modify, translate, reverse engineer, decompile, disassemble (except to the extent that this restriction is expressly prohibited by law), or create derivative works based upon the Program; (iii) copy the Program, except as expressly permitted herein; (iv) remove or alter any copyright notices on all copies of the Program; or (v) rent, lease or lend the Program. You agree that you shall only use the Program in a manner that complies with all applicable laws in the jurisdictions in which you use the Program, including, but not limited to, applicable restrictions concerning copyright and other intellectual property rights.
- (c) The Program may contain pre-release code that does not perform at the level of a final code release. In such case, the Program may not operate properly. Updated versions of the Program may be downloaded from [www.rcaaudiovideo.com/downloads](http://www.rcaaudiovideo.com/downloads)
- (d) AUDIOVOX is not obligated to provide support services for the Program.
- (e) The Program is provided with "RESTRICTED RIGHTS". Use, duplication, or disclosure by the U.S. Government is subject to restrictions as set forth in subparagraph (c)(1)(ii) of DFARS 252.227-7013, or FAR 52.227-19, or in FAR 52.227-14 Alt. III, as applicable.

### 3. TERM AND TERMINATION

- (a) Your license is effective on the date you accept this EULA and remains in effect until this EULA is terminated by either party.
- (b) You may terminate this EULA and the associated license, without any notice or delay, by destroying or permanently erasing the Program and all copies thereof.
- (c) If you fail to comply with any of the terms of this EULA, in whole or part, your license will automatically terminate without notice from AUDIOVOX.
- (d) Upon termination of this EULA and your associated license, you shall cease all use of the Program and destroy or permanently erase the Program and all full or partial copies thereof.

# End user license agreement

## 4. WARRANTY DISCLAIMER

THE PROGRAM IS PROVIDED "AS IS" WITHOUT WARRANTY OF ANY KIND, EITHER EXPRESSED OR IMPLIED, INCLUDING, BUT NOT LIMITED TO THE IMPLIED WARRANTIES OF MERCHANTABILITY, FITNESS FOR A PARTICULAR PURPOSE, TITLE OR NON-INFRINGEMENT. THE ENTIRE RISK AS TO THE QUALITY AND PERFORMANCE OF THE PROGRAM IS WITH YOU. SHOULD THE PROGRAM PROVE DEFECTIVE, YOU (AND NOT AUDIOVOX, ITS SUPPLIERS, OR ITS DEALERS) ASSUME THE ENTIRE COST FOR ALL NECESSARY REPAIR OR CORRECTION.

This exclusion of warranty may not be allowed under some applicable laws. As a result, the above exclusion may not apply to you, and you may have other rights depending on the law that applies to you.

## 5. OWNERSHIP RIGHTS

All title and intellectual property rights, including but not limited to copyrights, in and to the Program and any copies thereof are owned by AUDIOVOX, its Licensors or its suppliers. All title and intellectual property rights in and to the content which may be accessed through use of the Program is the property of the respective content owner and may be protected by applicable copyright or other intellectual property laws and treaties. This license grants you no rights to use such content. All rights not expressly granted are reserved by AUDIOVOX or its Licensors.

## 6. LIMITATION OF LIABILITY

(a) TO THE MAXIMUM EXTENT PERMITTED BY APPLICABLE LAW, IN NO EVENT SHALL AUDIOVOX, OR ITS DEALERS BE LIABLE FOR ANY SPECIAL, INCIDENTAL, INDIRECT, OR CONSEQUENTIAL DAMAGES WHATSOEVER (INCLUDING, WITHOUT LIMITATION, DAMAGES FOR LOSS OF PROFITS, BUSINESS INTERRUPTION, CORRUPTION OF FILES, LOSS OF BUSINESS INFORMATION, OR ANY OTHER PECUNIARY LOSS) REGARDLESS OF CAUSE OR FORM OF ACTION, INCLUDING CONTRACT, TORT, OR NEGLIGENCE, ARISING OUT OF YOUR USE OF OR INABILITY TO USE THE PROGRAM, EVEN IF AUDIOVOX HAS BEEN ADVISED OF THE POSSIBILITY OF SUCH DAMAGES. BECAUSE SOME STATES AND JURISDICTIONS DO NOT ALLOW THE EXCLUSION OR LIMITATION OF LIABILITY OF CONSEQUENTIAL OR INCIDENTAL DAMAGES, THE ABOVE LIMITATION MAY NOT APPLY TO YOU.

(b) YOU ASSUME RESPONSIBILITY FOR THE SELECTION OF THE APPROPRIATE PROGRAM TO ACHIEVE YOUR INTENDED RESULTS, AND FOR THE INSTALLATION, USE, AND RESULTS OBTAINED.

## 7. THIRD PARTY SOFTWARE

ANY THIRD PARTY SOFTWARE THAT MAY BE PROVIDED WITH THE PROGRAM IS INCLUDED FOR USE AT YOUR OPTION. IF YOU CHOOSE TO USE SUCH THIRD PARTY SOFTWARE, THEN SUCH USE SHALL BE GOVERNED BY SUCH THIRD PARTY'S LICENSE AGREEMENT, AN ELECTRONIC COPY OF WHICH WILL BE INSTALLED IN THE APPROPRIATE FOLDER ON YOUR COMPUTER UPON INSTALLATION OF THE SOFTWARE. AUDIOVOX IS NOT RESPONSIBLE FOR ANY THIRD PARTY'S SOFTWARE AND SHALL HAVE NO LIABILITY FOR YOUR USE OF THIRD PARTY SOFTWARE.

## 8. GOVERNING LAW

If you acquired this A/V Device in the United States, this EULA shall be governed and construed in accordance with the laws of the State of Indiana, U.S.A. without regard to its conflict of laws principles. If you acquired this A/V Device outside the United States or the European Union, then local law may apply.

## 9. GENERAL TERMS

This EULA can only be modified by a written agreement signed by you and AUDIOVOX, and changes from the terms and conditions of this EULA made in any other manner will be of no effect. If any portion of this EULA shall be held invalid, illegal, or unenforceable, the validity, legality, and enforceability of the remainder of the Agreement shall not in any way be affected or impaired thereby. This EULA is the complete and exclusive statement of the agreement between you and AUDIOVOX, which supersedes all proposals or prior agreements, oral or written, and all other communications between you and AUDIOVOX, relating to the subject matter of this hereof. AUDIOVOX'S Licensors shall be considered third party beneficiaries of this Agreement and shall have the right to enforce the terms herein.

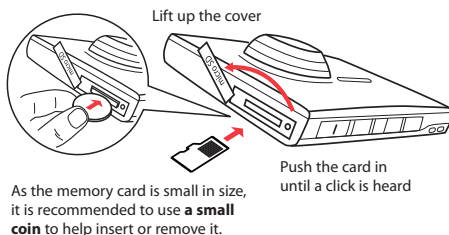
"AUDIOVOX SUBSIDIARY" shall mean any person, corporation, or other organization, domestic or foreign, including but not limited to subsidiaries, that is directly or indirectly controlled by Audiovox Corporation including, but not limited to, Audiovox Consumer Electronics, Inc. and Audiovox Electronics Corporation. For purposes of this definition only, the term "control" means the possession of the power to direct or cause the direction of the management and policies of an entity, whether by ownership of voting stock or partnership interest, by contract, or otherwise, including direct or indirect ownership of at least fifty percent (50%) of the voting interest in the entity in question.

# Getting started

**Dear RCA customer,**

Thank you for purchasing the RCA Small Wonder Camcorder. This product will let you record videos with high definition quality. You can also manage your recordings on your computer with the RCA Memory Manager included with this product.

To start using your camcorder, please follow the setup instructions in the following pages.

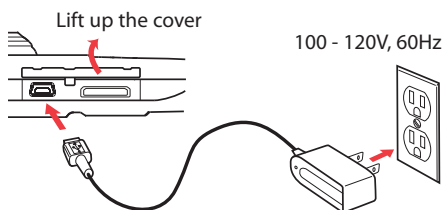


### 1. Content of the box

- Small Wonder Camcorder
- AC/DC adapter
- USB cable
- AV cable
- Carrying case
- Wrist strap
- Quick Start Guide
- Owner Registration card
- Warranty leaflet
- HDMI cable (Bundle with EZ229HD only)
- 2GB microSD card (For EZ229 only, installed in the camcorder)

## 2. Charging the battery


- Please charge the battery for at least 3 hours before first use.
- Charging is faster when the camcorder is switched off.
- The battery can also be charged by connecting to a PC with a USB cable. Refer to page 15 for more information.




- Use only the provided AC/DC charger
- Image is for reference only, the AC/DC adapter shown in the image may vary from the actual product

### 3. Inserting microSD memory card

- A microSD memory card (Bundle with EZ229HD only) is recommended for recording as the camcorder internal memory will only permit minutes of recording time.

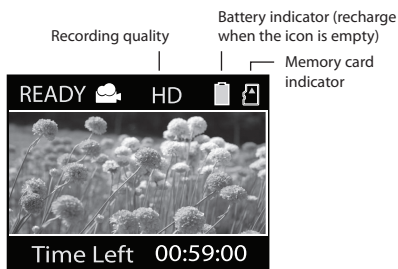
- The card icon () appears on the screen with memory card inserted.
- To remove card, push card in until a click is heard, then slowly release the card. As card is under minimal tension when locked in memory slot, please use care when removing.
- Once microSD memory card is inserted, new recordings will be saved on the memory card.

#### 4. Turning on the camcorder

- Slide and hold the power switch  until the camcorder turns on.



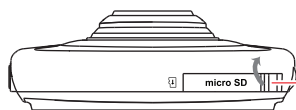
- It is recommended to set the date and time before using the camcorder. Refer to "Menu settings" on page 13 for more information.
- "Ready" shows on the LCD screen when the camcorder is ready for recording.



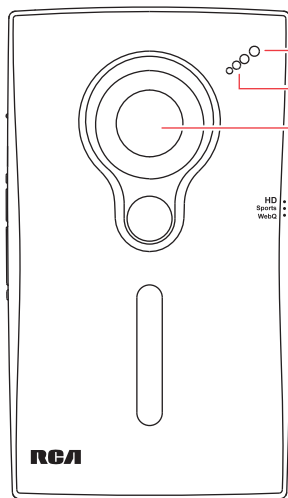
- Repeat this step to turn off the camcorder.
- The camcorder will automatically turn off after 2 minutes if not in use.
- Refer to the following pages for more information on recording and other operations.

# General controls

## Panel controls



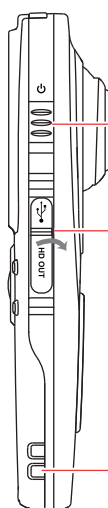
microSD card slot (Lift up the cover to show the card slot)



Recording indicator

Microphone

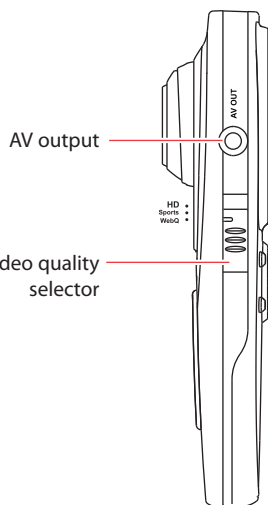
Lens



On/off switch\*

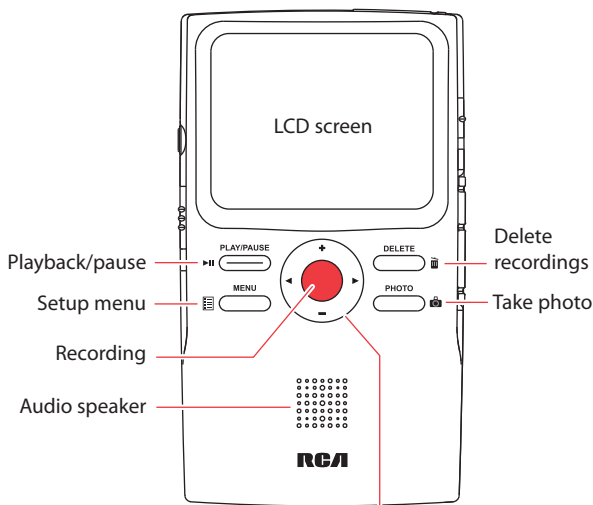
USB and HDMI video output  
(Lift up the cover to access the connectors)

Camcorder strap hole



AV output

Video quality selector



LCD screen

Playback/pause

Setup menu

Recording

Audio speaker

Delete recordings

Take photo

**\* To reset the camcorder (if it is not functioning properly):**  
Slide and hold the On/Off switch for more than 10 seconds.

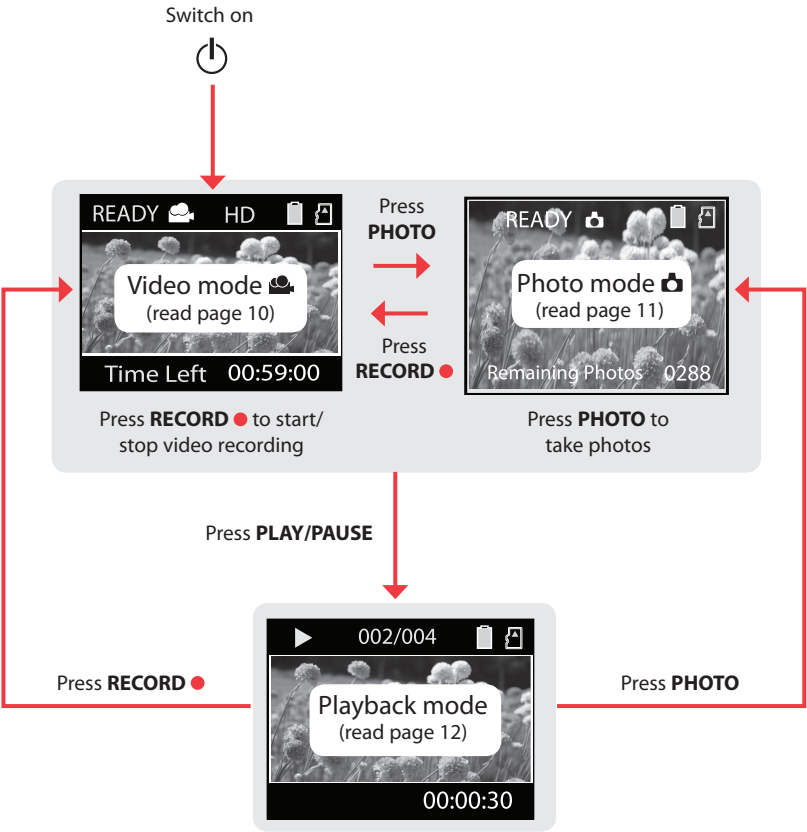
+/- – Volume (during playback) or zoom  
◀/▶ – Previous or next recording; fast  
rewind or forward



# General controls

## Operation modes

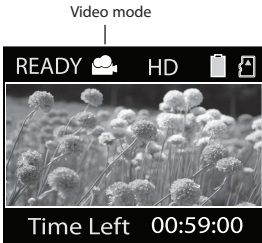
There are three basic modes for operating the camcorder: Video, Photo and Playback. The camcorder will always enter into Video mode after switched on. Refer to the diagram below for switching between modes and read relevant sections in the user manual for detailed operations.



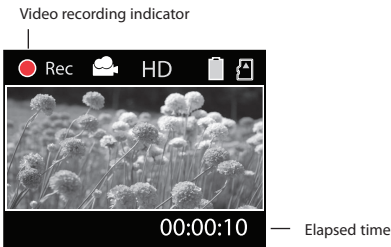
# Video mode

## Recording videos

1. In Video mode (📹), press the red **RECORD** ● button to begin recording.



- If you are not in Video mode, press the red **RECORD** ● button once to enter Video mode (📹) and then press the button again to begin video recording.

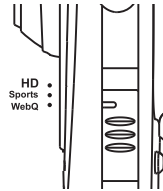


- While recording, the red recording light on the camcorder front turns on.
2. Press **PLAY/PAUSE** to pause a recording.

- A pause indicator || replaces the red ● at the top left corner of the screen.
  - To resume recording, press **PLAY/PAUSE**.
3. Press + or – to zoom in or out before or during recording.
  4. Press the red **RECORD** ● button to stop recording.

## Recording quality

- Slide the Video Quality selector to select the recording quality. The selected setting (HD, Sports or webQ) appears on the display screen during recording.
- Refer to the table below for more information on quality settings.



Light conditions can greatly affect the quality of your videos. You can set to optimize the performance of the camcorder under different light sources. Refer to "Menu settings" for more information.



## Quality settings

Settings	Recommended for:	Resolutions (pixel) and Fram Rate (FPS)	Approx. recording durations on a 16GB memory card*
HD (High Definition mode)	Viewing on TV & Best video quality	1280 x 720 @ 30fps	8 hours
Sports (Sports mode)	Viewing on TV & Capturing fast movements	848 x 480 @ 60fps	8 hours
webQ (Web Quality mode)	Uploading to and viewing on the web	320 x 240 @ 30fps	40 hours

\* Actual recording time and capacity will vary depending on type of video content being recorded, system requirements, and other factors.

# Photo mode

## Taking photos

1. In Photo mode (📷), press **PHOTO** to take photos.



- The resolution of the photos is 8.0 mega pixel\*.
  - If you are not in Photo mode, press **PHOTO** once to enter Photo mode (📷) and then press the button again to take photos.
2. After taking photos, press the red **RECORD** ● button to exit Photo mode (📷) and return to Video mode (📹).

\* 8 mega pixel is extrapolated from 5 mega pixel sensor.

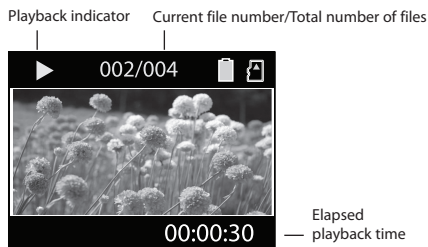
You must return to Video mode (📹) before recording videos.



# Playback mode

## Playing back recordings

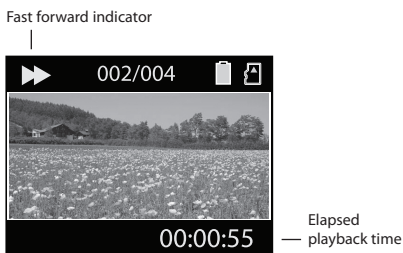
1. Press **PLAY/PAUSE** to enter Playback mode and start playback of the most recent recording (video/photo).



Press and hold **PLAY/PAUSE** for three seconds to play all recordings.



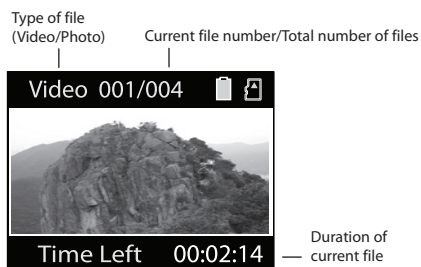
2. Press + or – during playback to adjust volume (video only).
3. Hold down ◀ or ▶ to fast rewind or forward the selected video during playback.



4. Press **PLAY/PAUSE** to pause playback.
- Press **PLAY/PAUSE** again to resume playback.



5. To select another video, press ◀ or ▶ to cue the previous or next video.

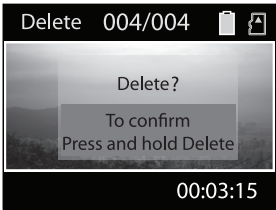


6. Press the red **RECORD** button to return to Video mode (📹) or if no video is selected after playback has finished, Video mode (📹) will resume after 5 seconds.
- You may also press **PHOTO** to go to Photo mode (📷) after playback.

# Deleting

## Deleting recordings

1. Press **DELETE** and the last recording and "DELETE ?" appear on the screen.



To delete all videos, press & hold **DELETE** for 3 seconds and then repeat step 2.

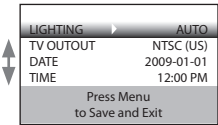


- To select another video, press ◀ or ▶ to cue the previous or next video.
2. Press and hold **DELETE** until the selected video is deleted.

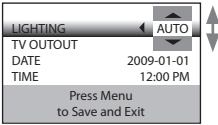
# Menu settings

## Using the camcorder menu

1. Press **MENU** to show the camcorder menu on the screen.
2. Press + or – to highlight a menu option.



3. Press ▶ to enter the highlighted menu option.
4. Press + or – to change the setting.



5. Press ◀ to exit the current menu option.
6. Press **MENU** to save settings and exit the camcorder menu.

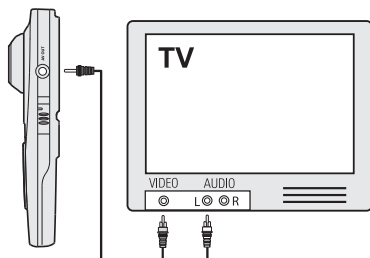
## Menu options and settings

Menu options	Available settings
Lighting	Auto, Outdoor, Indoor, Low light
TV Output	NTSC (US), PAL
Date	YYYY - MM - DD
Time	HR : MM
Language	English, Spanish, French
Key tone	On, Off
System Info	Show the current firmware version

## Connecting to external devices

### Viewing videos on TV

1. Plug in the AV cable (provided) – Insert the single connector end into the camcorder (AV jack) and connect the double connector ends to the corresponding video (yellow) and audio (white) input jacks on the TV.



2. Turn on the TV and the camcorder.
3. Switch the TV to the selected video input.
  - Refer to your TV manual for instructions.
4. You may play and delete videos viewed on the TV by using the camcorder buttons.

The default TV output standard is NTSC. You can switch it to PAL standard by going to the camcorder menu. Refer to "Menu settings" for more information.



### Recording videos to VHS tape or DVD

1. Plug in the AV cable (provided) – Insert the single connector end into the camcorder and connect the double connector ends to corresponding video (yellow) and audio (white) inputs of the recording device (VHS or DVD recorder).
2. Turn on the camcorder and the recording device.
3. Switch recording device to the video input connected to the camcorder.
  - Refer to your user manual of the recording device for instructions.
4. Start recording of your recording device and press and hold **PLAY/PAUSE** on the camcorder for 3 seconds to play all videos on the camcorder.

For best viewing or recording quality, use the HDMI connector on the left panel of the camcorder with an HDMI cable (Bundle with EZ229HD only).



# Managing videos on your computer

## Computer system requirements

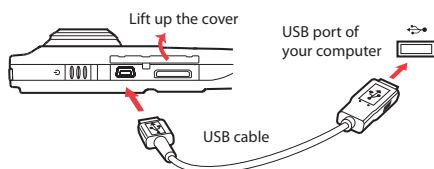
- Windows® XP with Service Pack 2 or Windows Vista™
- USB Port (2.0 recommended)
- Internet Access (broadband recommended)
- 16-bit color video card
- Mac®: Mac OS® X version 10.4.11 or later. To view videos on your Mac, copy the video files to your computer and use Quicktime® for viewing (plugin may be required)

### PC Hardware:

- Pentium 4, 800 MHz or better
- At least 512MB system RAM
- Video card with 64 MB of RAM (128 MB recommended)

## Connecting to a PC

1. Open the USB cover.
2. Connect the supplied USB cable to the connection jack.
- USB connector standard: mini-B
3. Connect the other end of the cable to the computer.



4. The first time you connect the camcorder to a PC, the RCA **Memory Manager** application\*\* will start installation automatically. Follow the instructions on screen for installation.
- Camcorder will not record when it is connected to computer.
- If the installation does not start automatically, open My Computer and double-click the SmallWonder icon. Double-click **rcasw\_setup** to start the installation.
- The installation sequence will only appear the first time you connect your camcorder to a PC. Each subsequent time you connect the camcorder to that PC, the RCA Memory Manager application should open automatically.

\* Available for free download at [www.microsoft.com](http://www.microsoft.com)

\*\* The application is also available for free download at [www.rcaaudiovideo.com](http://www.rcaaudiovideo.com)

Windows is a registered trademark of Microsoft Corporation in the United States and other countries.

- Certain video codecs required to view videos on a PC are licensed under GPL Version 2. Please refer to [www.gnu.org/licenses/old-licenses/gpl-2.0.txt](http://www.gnu.org/licenses/old-licenses/gpl-2.0.txt)
- Memory Manager® is proprietary software licensed by Audiovox Corporation. Text for the Memory Manager End User License agreement for this product can be found in the Help Section of the Memory Manager application.



## About RCA Memory Manager

The included RCA Memory Manager application lets you:

- Browse and play videos
- Delete videos
- Save videos to your computer
- Edit videos by simply drag-and-drop
- Capture video screens as photos
- Send videos as email attachments
- Upload videos to YouTube or Box.net

For more detailed instructions on using RCA Memory Manager, please refer to the help section in the software.



## Viewing videos on PC

**To ensure that videos can be managed and played on your PC:**

- Make sure to install the included Memory Manager application.
- Use the SHARE functions of the Memory Manager for sharing videos with friends and family. The native files from the camcorder may not play in other computers.

The AVI files recorded by the camcorder complies to the H.264 standard.



## Additional information

### Tips and troubleshooting

#### **Cannot turn on the camcorder.**

- Make sure the battery is not empty. Refer to the user manual to properly charge the camcorder before use.

#### **MicroSD card cannot be detected by camcorder.**

- Make sure the microSD card is inserted properly. Remove and insert the card from the card slot again when the camcorder is powered off.

#### **Camcorder not turned on after connected to PC or AC/DC adapter.**

- The camcorder battery may be very low. Slide the power button to turn on the camcorder after connected to PC or AC/DC adapter.

#### **Cannot record videos.**

- Make sure the memory space is not full for recording.

#### **Available time for recording has significantly reduced.**

- Make sure you have properly selected the video recording quality before recording.

#### **The recording time and date are incorrect.**

- Make sure you have properly set the date and time in the setting menu. Refer to "Menu settings" for more information.

#### **The keytone is annoying. Can it be switched off?**

- Yes. Refer to "Menu settings" for more information.

#### **No sound when playing back recordings.**

- Adjust the volume by pressing + or – during playback.

#### **Pictures are distorted when videos are played back via connected TV set.**

- Make sure you have correctly selected the TV output system (PAL or NTSC) from the setting menu. Refer to "Menu settings" for more information.

#### **Can I retrieve deleted videos?**

- Unfortunately, deleted videos cannot be retrieved.

#### **The camcorder is not functioning properly.**

- Slide and hold the On/Off switch for more than 10 seconds to reset the camcorder.

#### **Cannot view recorded videos on PC.**

- Install the included Memory Manager software and use it to view videos on your PC.

#### **My friends cannot view the videos I have sent them.**

- Use the SHARE functions of the Memory Manager for sharing videos with friends and family. The native files from the camcorder may not play in other computers.

### Product registration

Please go to [www.rcaudiovideo.com](http://www.rcaudiovideo.com) for online registration.

### For your records

Keep your sales receipt for proof of purchase to obtain warranty parts and service.

In the event that service should be required, you may need both the model number and the serial number. In the space below, record the date and place of purchase, and the serial number:

Model No.

Date of Purchase

Place of Purchase

Serial No.

### Service Information

This product should be serviced only by those specially trained in appropriate servicing techniques. For instructions on how to obtain service, refer to the warranty included in this Guide.

### Technical specifications

Product: Digital Camera Recorder

Brand: RCA

Model: EZ209HD/EZC209HD/EZ229HD

Electrical Consumption: 3.7V Lithium battery

Power adapter: (input) 100-120V~60Hz 0.3A,  
(output) 5V  $\equiv$  0.5A

### Copyright warning

This player is for your personal use only. Unauthorized recording or duplication of copyrighted material may infringe upon the rights of third parties and may be contrary to copyright laws.



## Additional information

### Back up your data

As with any portable player, you must back up the drive regularly. The manufacturer is not responsible for lost data.

### Visiting RCA website

Please visit **[www.rcaaudiovideo.com](http://www.rcaaudiovideo.com)** for:

- Latest software and firmware
- RCA Memory Manager Software
- User manual
- Frequently asked questions (FAQ)
- Customer service and technical support information

## Warranty information

### Limited warranty

#### 12 Month Limited Warranty

#### Applies to RCA Audio/Video Products

AUDIOVOX ELECTRONICS CORP. (the Company) warrants to the original retail purchaser of this product that should this product or any part thereof, under normal use and conditions, be proven defective in material or workmanship within 12 months from the date of original purchase, such defect(s) will be repaired or replaced with reconditioned product (at the Company's option) without charge for parts and repair labor.

To obtain repair or replacement within the terms of this Warranty, the product is to be delivered with proof of warranty coverage (e.g. dated bill of sale), specification of defect(s), transportation prepaid, to the Company at the address shown below.

This Warranty does not extend to the elimination of externally generated static or noise, to correction of antenna problems, loss/interruptions of broadcast or internet service, to costs incurred for installation, removal or reinstallation of product, to corruptions caused by computer viruses, spyware or other malware, to loss of media, files, data or content, or to damage to tapes, discs, removable memory devices or cards, speakers, accessories, computers, computer peripherals, other media players, home networks or vehicle electrical systems.

This Warranty does not apply to any product or part thereof which, in the opinion of the Company, has suffered or been damaged through alteration, improper installation, mishandling, misuse, neglect, accident, or by removal or defacement of the factory serial number/bar code label(s). THE EXTENT OF THE COMPANY'S LIABILITY UNDER THIS WARRANTY IS LIMITED TO THE REPAIR OR REPLACEMENT PROVIDED ABOVE AND, IN NO EVENT, SHALL THE COMPANY'S LIABILITY EXCEED THE PURCHASE PRICE PAID BY PURCHASER FOR THE PRODUCT.

This Warranty is in lieu of all other express warranties or liabilities. ANY IMPLIED WARRANTIES, INCLUDING ANY IMPLIED WARRANTY OF MERCHANTABILITY, SHALL BE LIMITED TO THE DURATION OF THIS WRITTEN WARRANTY. ANY ACTION FOR BREACH OF ANY WARRANTY HEREUNDER INCLUDING ANY IMPLIED WARRANTY OF MERCHANTABILITY MUST BE BROUGHT WITHIN A PERIOD OF 24 MONTHS FROM DATE OF ORIGINAL

PURCHASE. IN NO CASE SHALL THE COMPANY BE LIABLE FOR ANY CONSEQUENTIAL OR INCIDENTAL DAMAGES FOR BREACH OF THIS OR ANY OTHER WARRANTY. No person or representative is authorized to assume for the Company any liability other than expressed herein in connection with the sale of this product.

Some states do not allow limitations on how long an implied warranty lasts or the exclusion or limitation of incidental or consequential damage so the above limitations or exclusions may not apply to you. This Warranty gives you specific legal rights and you may also have other rights which vary from state to state.

#### How to make a warranty claim:

- If your product is capable of storing content (such as an mp3 player, digital voice recorder, etc), it is recommended to make periodic backup copies of content stored on the product. If applicable, before shipping a product, make a back up copy of content or data stored on the device. Also, it is advisable to remove any personal content which you would not want exposed to others. IT IS LIKELY THAT CONTENTS AND DATA ON THE DEVICE WILL BE LOST DURING SERVICE AND REFORMATTING. AUDIOVOX ACCEPTS NO LIABILITY FOR LOST CONTENT OR DATA, OR FOR THE SECURITY OF ANY PERSONAL CONTENT OR DATA ON THE RETURNED DEVICE. Product will be returned with factory default settings, and without any pre-loaded content which may have been installed in the originally purchased products. Consumer will be responsible for reloading data and content. Consumer will be responsible to restore any personal preference settings.
- Properly pack your unit. Include any remotes, memory cards, cables, etc. which were originally provided with the product. However DO NOT return any removable batteries, even if batteries were included with the original purchase. We recommend using the original carton and packing materials.
- Include evidence of purchase date such as the bill of sale. Also print your name and address and a description of the defect. Send via standard UPS or its equivalent to:

**Audiovox Electronics Corp.**  
**Attn: Service Department.**  
**150 Marcus Blvd.**  
**Hauppauge N.Y. 11788**

## Warranty information

1-877-833-3491

- Insure your shipment for loss or damage. Audiovox accepts no liability in case of damage or loss en route to Audiovox.
- Pay any charges billed to you by the Exchange Center for service not covered by the warranty.
- A new or refurbished unit will be shipped to you freight prepaid.

### **What we will do:**

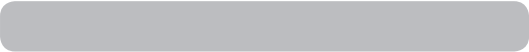
Provide you with a new, or at our option, a refurbished unit. The exchange unit is under warranty for the remainder of the original product's warranty period.

### **For Canada Customers, please ship to:**

Audiovox Return Centre  
c/o Genco  
6685 Kennedy Road,  
Unit#3, Door 16,  
Mississauga, Ontario  
L5T 3A5

Illustrations contained within this publication are for representation only and subject to change.

The descriptions and characteristics given in this document are given as a general indication and not as a guarantee. In order to provide the highest quality product possible, we reserve the right to make any improvement or modification without prior notice.



Audiovox Electronics Corp.  
150 Marcus Blvd., Hauppauge, NY 11788  
© 2009 Audiovox Electronics Corp.  
Trademark(s) \* Registered  
Marca(s) \* Registrada(s)  
Marque(s) \* Déposée(s)  
[www.rcaaudiovideo.com](http://www.rcaaudiovideo.com)