



Monitor. Manage. Maintain.

Under the hood and behind the wheel.

User Interface Walkthrough



Fuel Savings

Monitors daily driving habits and generates reports. Gives fuel savings tips.



Vehicle Health

Know what your mechanic knows before you go for service.



Driver Scoring

Monitor driver habits. Great for coaching new or aging drivers.



Restrict Phone Usage

Smartphone app for Android™ and Blackberry™ to limit the control of the phone while driving.



Vehicle Location

Know where your vehicle is, or where it is heading. Track online or from a Smartphone in real-time. Notifies you if your vehicle has been towed or moved.



Safety Zones

Know where and when your teen or aging driver travels. Set boundaries and receive notifications and alerts when a boundary is breached.

Landing Page

Congratulations! You have purchased your Car Connection device, and activated it, and now it's time to sign in to the user interface and begin enjoying all of its benefits.

Open your web browser, and go to www.mycar-connection.com



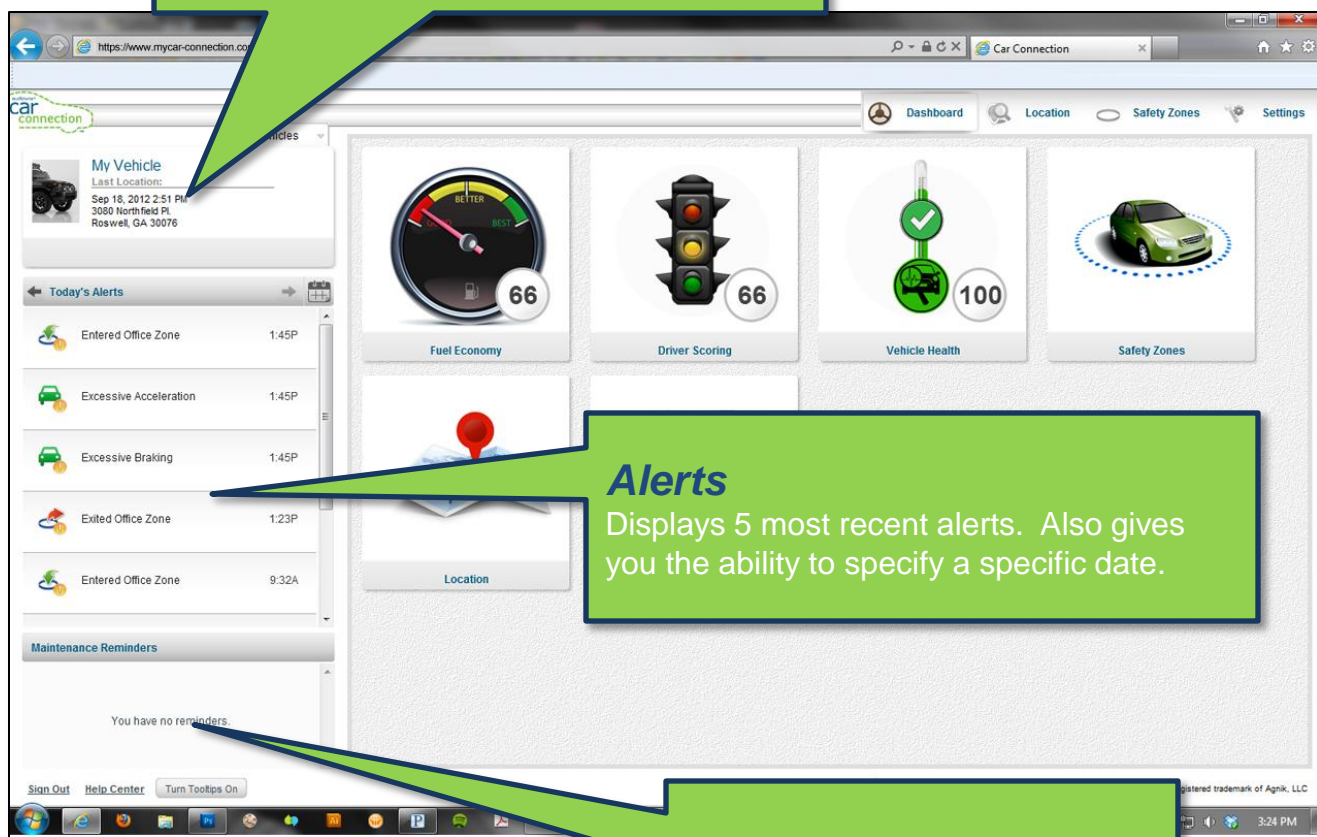
Sign in with your email address and password that you set up during your device activation.

Dashboard Home Screen

Your dashboard is where your Car Connection experience will start each and every time you log in. Below is a brief description of the icons.

Current Vehicle

Displays the vehicle currently being monitored. Also contains the drop down tab to change vehicles in real time.



Alerts

Displays 5 most recent alerts. Also gives you the ability to specify a specific date.

Reminders

Displays 5 most recent alerts.

***TIP – Each time you refresh your screen the most recent numbers and information will be displayed.**

Dashboard Home Screen

Fuel Economy

Displays the “real” MPG (Miles Per Gallon) in both a numeric and visual representation.

Click within the box to proceed to the Fuel Economy page for further details in regards to the vehicle’s fuel economy.



Driver Scoring

Displays your driver score in both a numeric and visual representation, which may be used for coaching or possible insurance premium discounts.

Click within the box to proceed to the Driver Scoring page for further details in regards to what made up the specific score as well as tips on how to improve.

Vehicle Health

Displays your vehicle’s health in both a numeric and visual representation, which may be used for scheduled or emergency maintenance.

Click within the box to proceed to the Vehicle Health page for further details, such as alerts, reminders, and recalls.

***TIP – Each time you refresh your screen the most recent numbers and information will be displayed.**

Dashboard Home Screen

Safety Zones

Displays on a map currently set zones, allows for modification of those, as well as the creation of new ones.

Click within the box to proceed to the Safety Zone page for further details and instructions on how to create, modify, and delete zones.



Location

Displays on a map current location as well as previous locations within a 24 hour period.

Click within the box to proceed to the Location page for further details and ability to specify previous dates to see where the vehicle has been.

Settings

Click within the box to proceed to the Settings page to upload a vehicle picture, name, make, model, year.

Edit your profile, password and notifications.

Zoomsafer app is located here as well

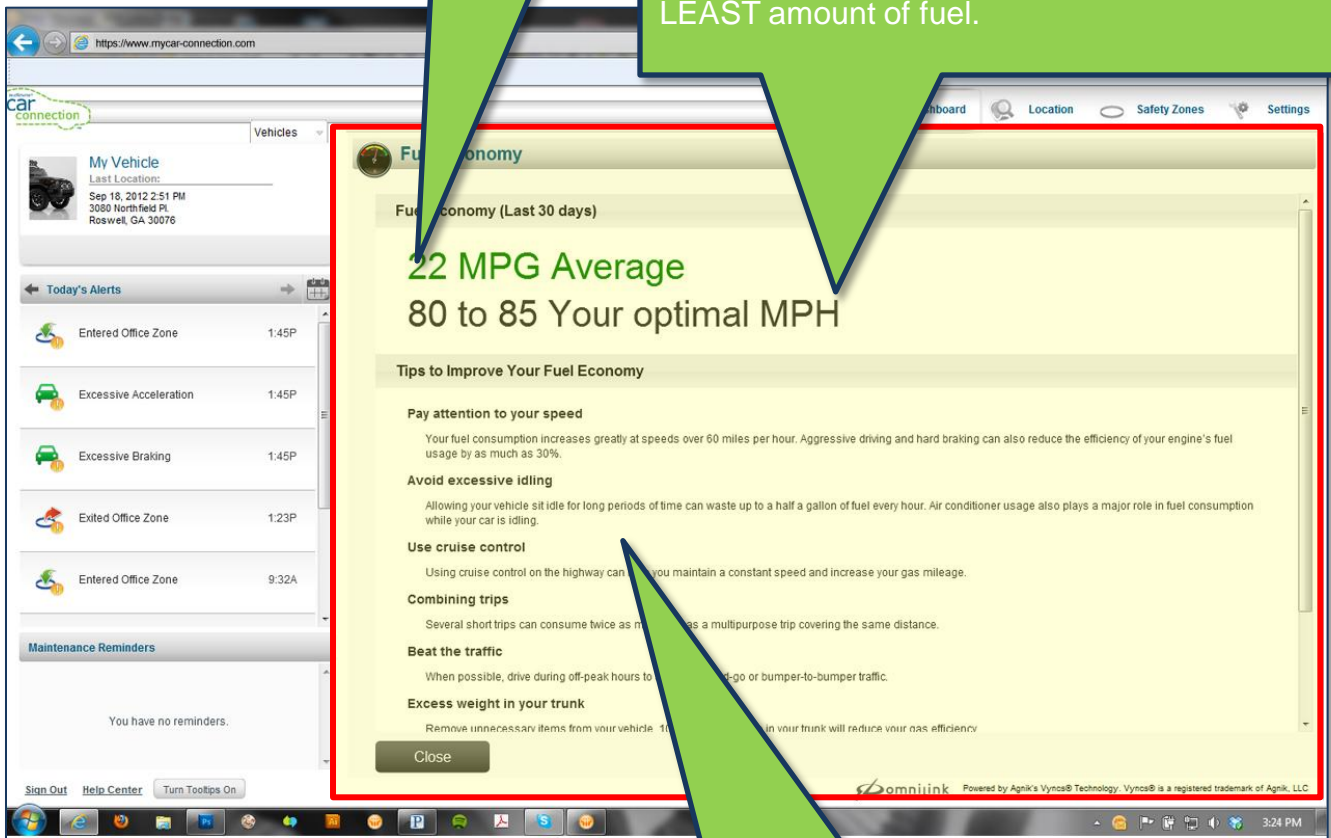
****TIP – Each time you refresh your screen the most recent numbers and information will be displayed.***

Fuel Economy Screen

Average MPG (Miles Per Gallon)

Optimal MPH (Miles Per Hour)

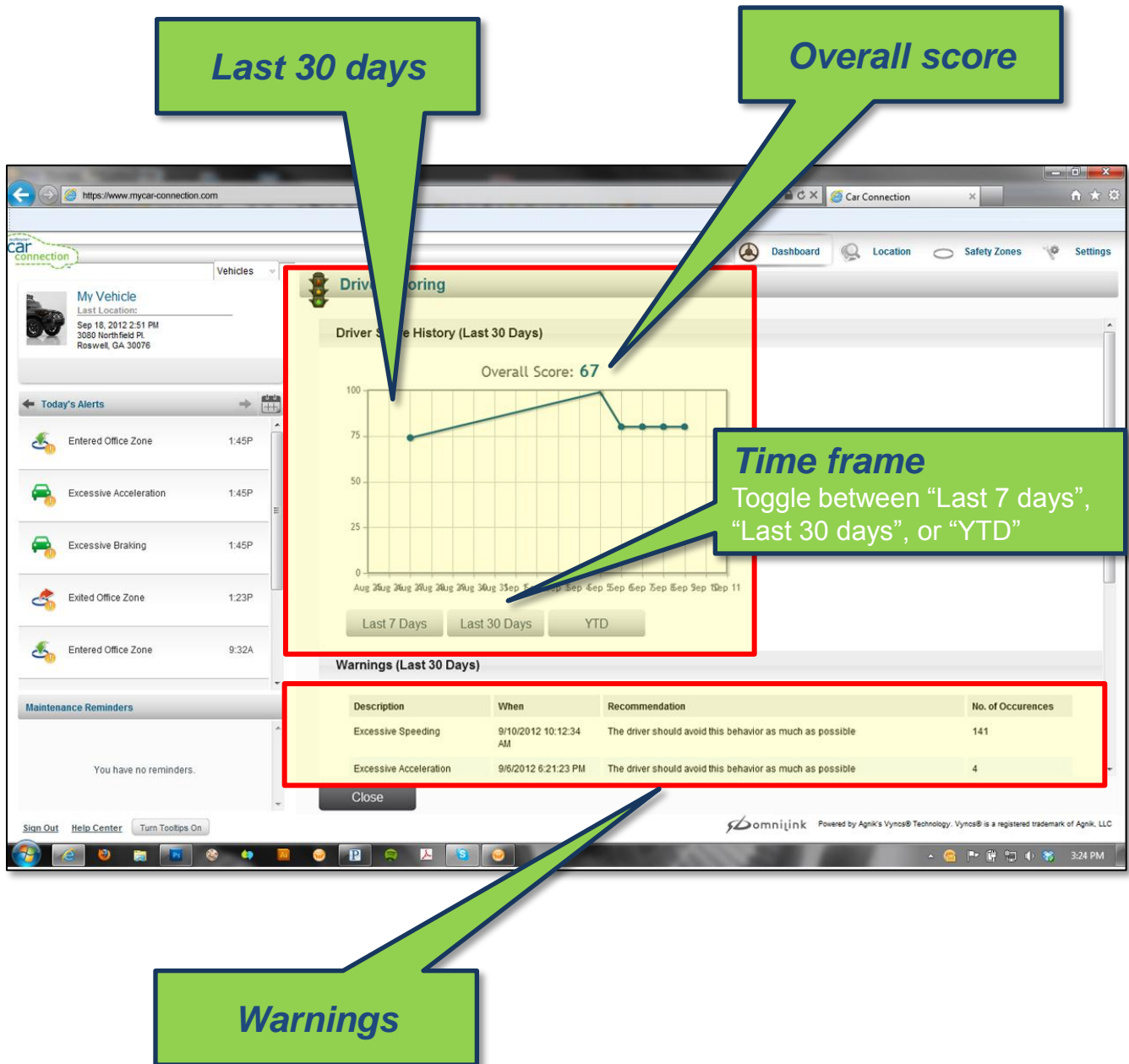
The speed at which your vehicle consumes the LEAST amount of fuel.



TIPS

Displays tips on how you MAY save fuel.

Driver Scoring Screen



Vehicle Health Screen

Alerts

Vehicle needs attention

Recalls

The screenshot shows the 'Vehicle Health' screen for a vehicle named 'My Vehicle' (Last Location: Sep 18, 2012 2:51 PM, 3080 Northfield Pl, Roswell, GA 30076). The screen is divided into three main sections: Alerts, Recalls, and Reminders. The Alerts section lists various events like 'Entered Office Zone' and 'Excessive Acceleration'. The Recalls section displays a table of vehicle recalls. The Reminders section shows a list of tasks to be completed. A 'View Report' button is located at the bottom of the screen.

Area	Description	Date
Exterior Lighting/Back Up Lights	FORD IS RECALLING CERTAIN MODEL YEAR 2011-2012 FORD F-150, 2012 EXPEDITION AND LINCOLN NAVIGATOR, AND 2012-2013 MUSTANG VEHICLES, FOR FAILING TO COMPLY WITH THE REQUIREMENTS OF FEDERAL MOTOR VEHICLE SAFETY STANDARD NOS. 102, "TRANSMISSION SHIFT LEVER SEQUENCE, STARTER INTERLOCK, AND TRANSMISSION BRAKING EFFECT" AND 108 "LAMPS, REFLECTIVE DEVICES AND ASSOCIATED EQUIPMENT." THESE	4/29/2012 8:00:00 PM

Task	Scheduled Date
Windshield wiper blades	
Tire rotation	
Oil change	

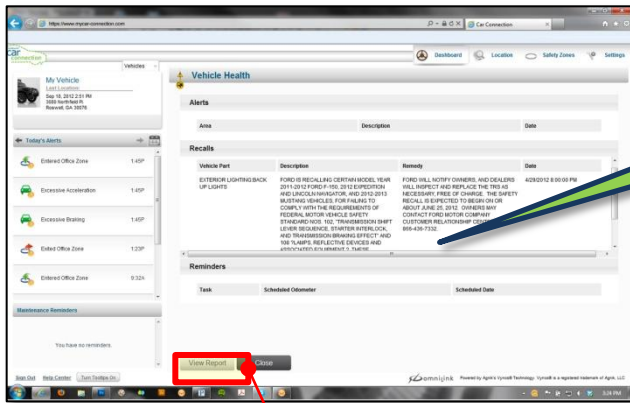
Reminders

User set – windshield wiper blades, tire rotation, oil change, etc.

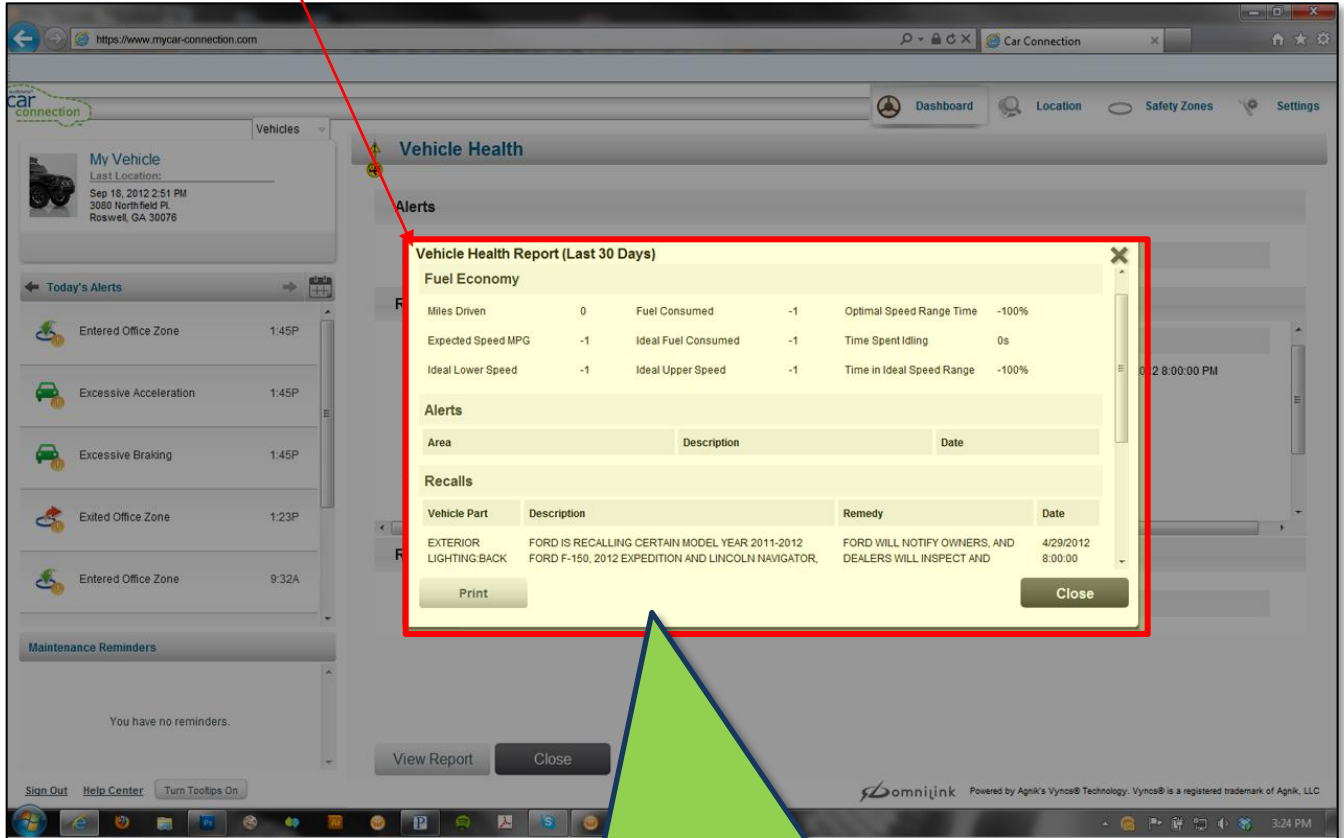
View Report

View a detailed report based on alerts and recall information. Decide whether you can maintain or have the need to bring into a mechanic.

Vehicle Health Screen cont.



Main Vehicle Health Screen



Report

View such information as: Miles driven, fuel consumed, time spent idling, optimal speed range, etc. and recall information.

Safety Zones Screen

The screenshot displays the 'Safety Zones' interface within the Car Connection web application. The interface includes a sidebar on the left with a 'Vehicles' dropdown and a 'Zones' list. The main area shows a satellite map of an office location with a yellow circular zone overlaid. A red circle highlights the 'Actual zone size' on the map. A red box highlights the 'Zoom IN/OUT' controls on the right side of the map. Another red box highlights the 'Add new zones' button at the bottom of the 'Zones' list. A green callout points to the 'Currently set zones' list in the sidebar.

Currently set zones

Actual zone size

Zoom IN/OUT

Add new zones

Zones List:

- Airport**
6000 North Terminal Parkway
Atlanta, GA 30320
Show Zone Edit Zone Delete Zone
- Home**
1564 Santa Rita Way
Roswell, GA 30076
Show Zone Edit Zone Delete Zone
- Office**
3080 Northfield Pl.
Roswell, GA 30076
Show Zone Edit Zone Delete Zone

Map Controls:

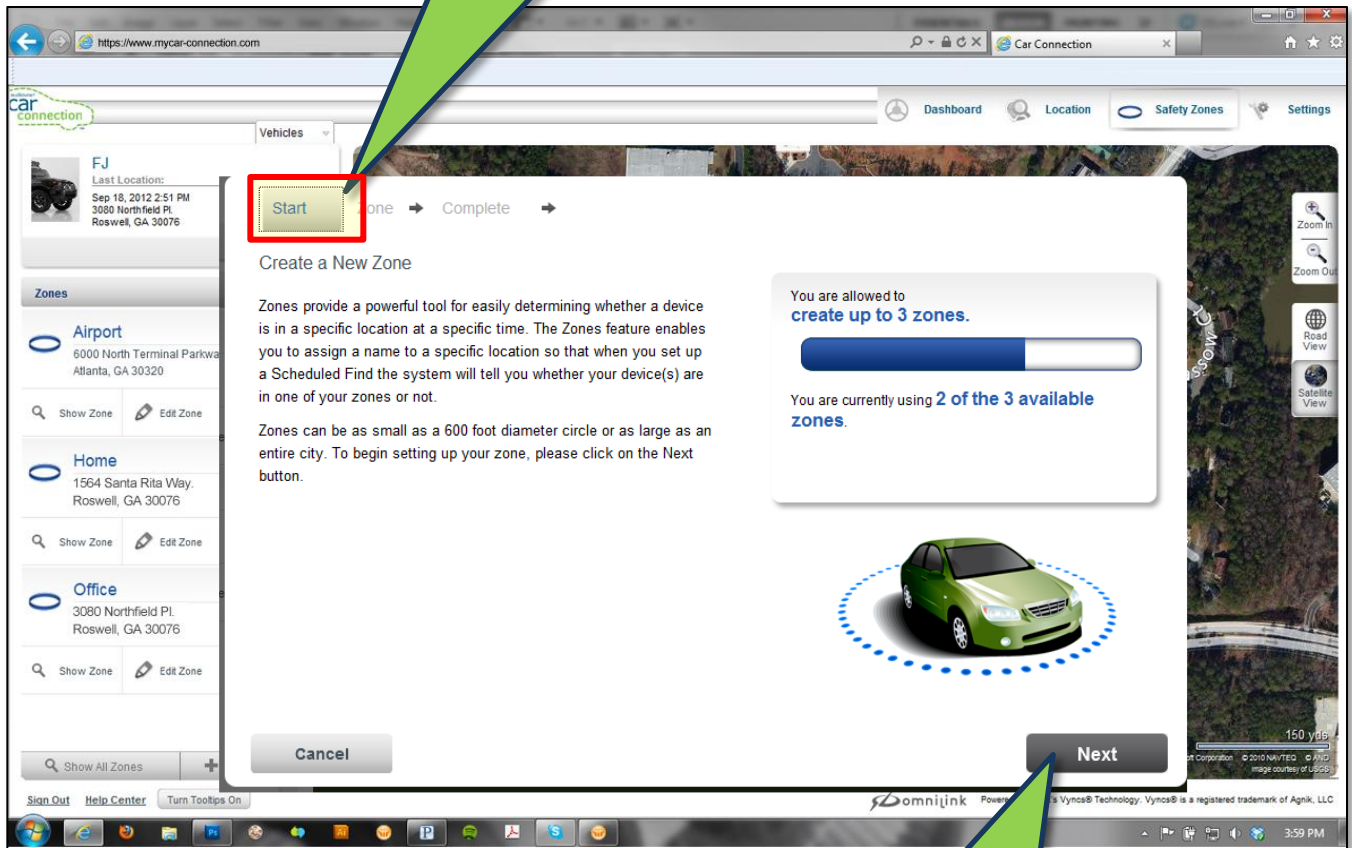
- Zoom In
- Zoom Out
- Road View
- Satellite View

Bottom Bar:

- Show All Zones
- + Add New Zone

Safety Zones Set-up Screen

Currently set zones



Zone creation

You can create up to 3 zones. This is as easy as getting directions online.

Safety Zones Set-up Screen cont.

Zone Name

Zone Address

Where would you like us to place the center point for this zone?

Zone Details

* Zone Name:

Address

* Street:

* City:

* State:

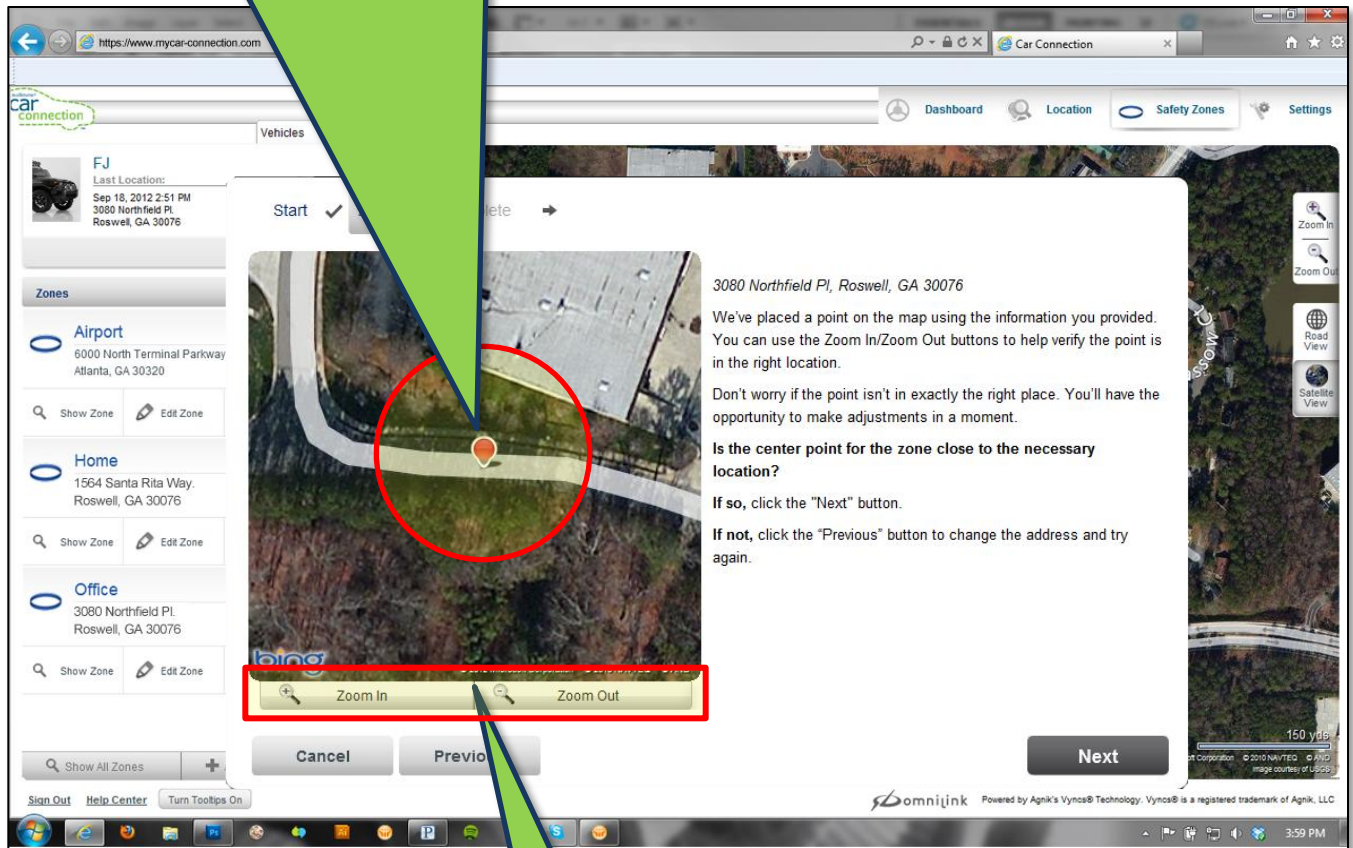
* Zip:

Cancel Previous Next

Safety Zones Set-up Screen cont.

Zone Pin

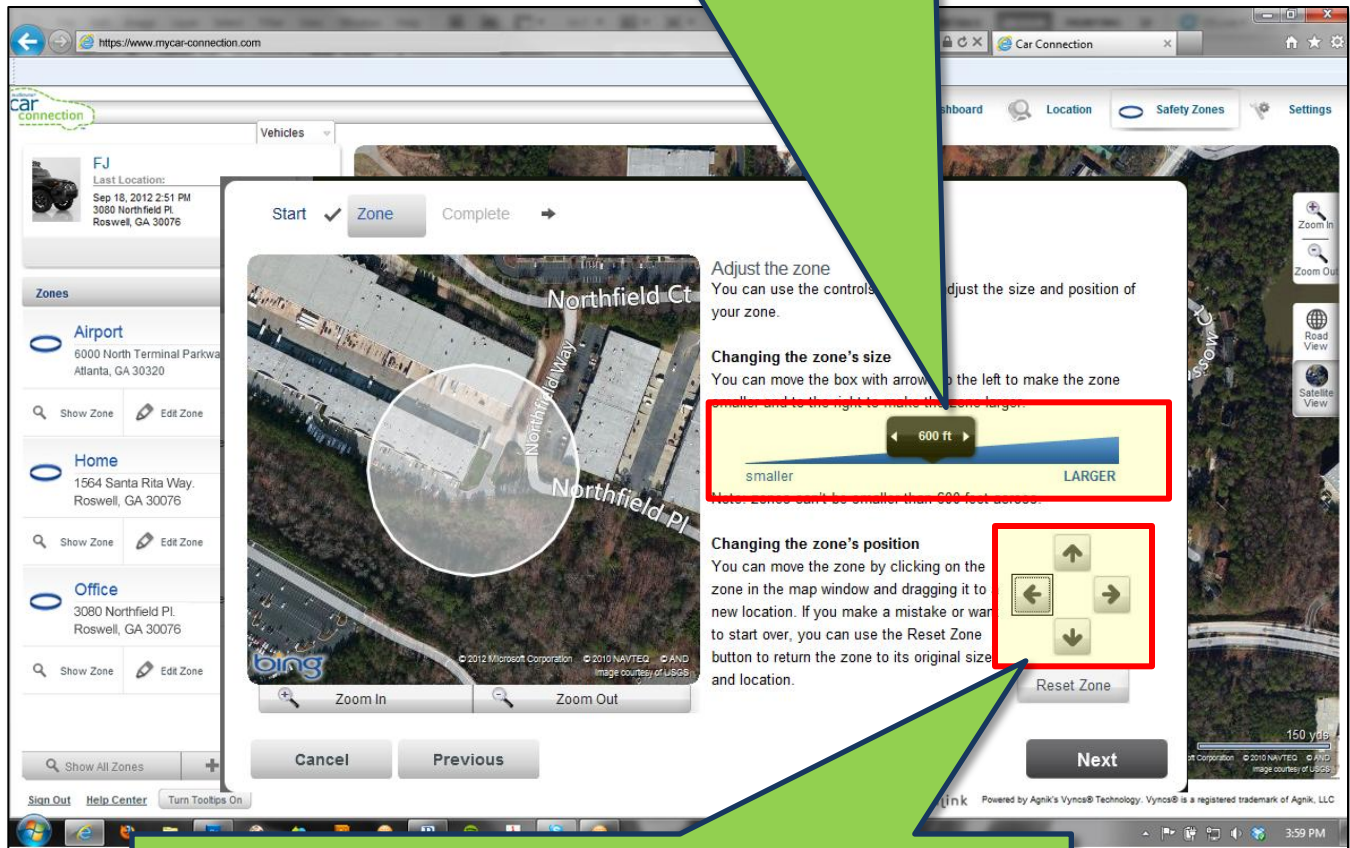
Once you have entered the address of your specific Zone, it will appear on the map. Do not worry if it isn't in the exact spot you want it, you will have the chance to move it on the next screen.



**Zoom In/Out
(map view)**

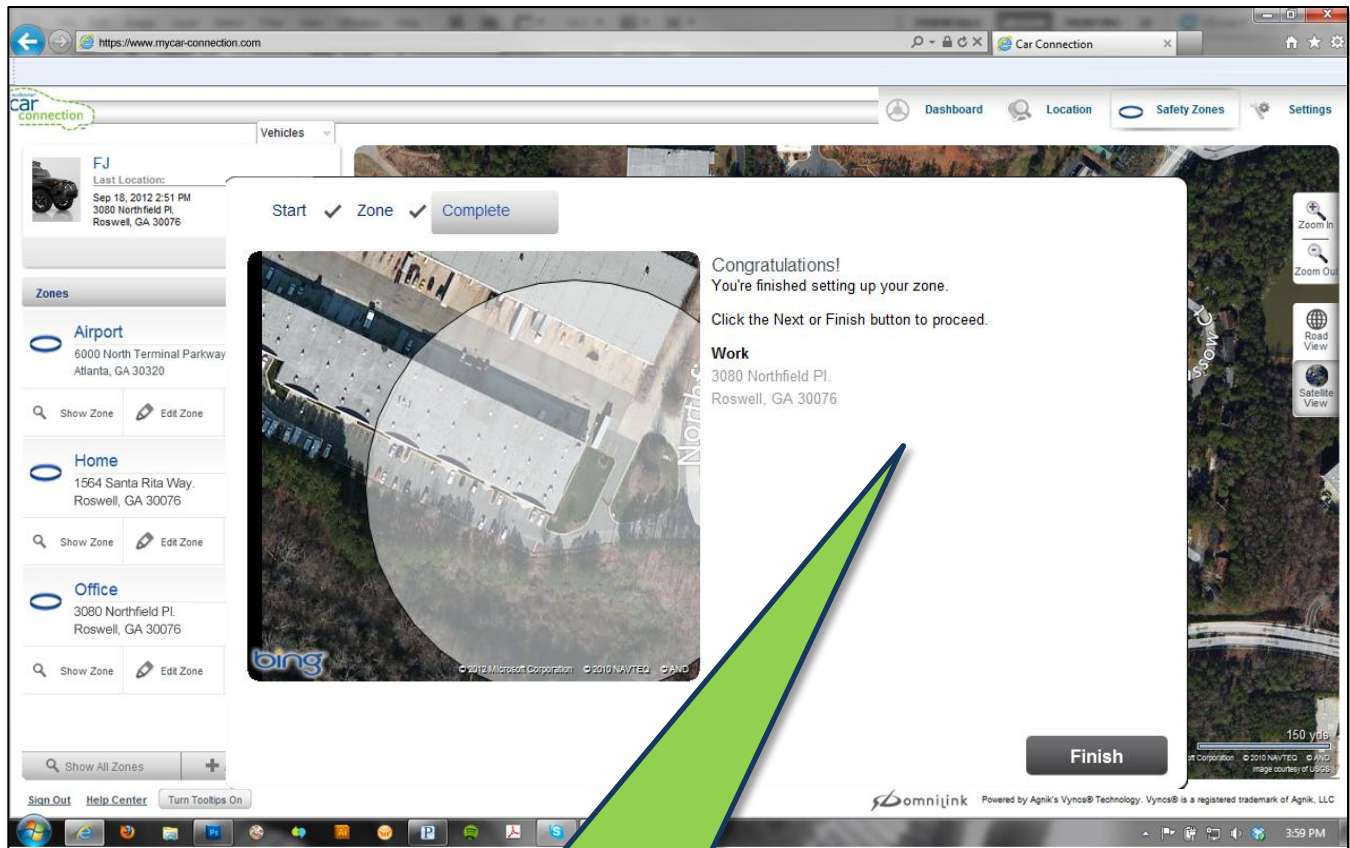
Safety Zones Set-up Screen cont.

Size Adjustment



Position Adjustment

Safety Zones Set-up Screen cont.



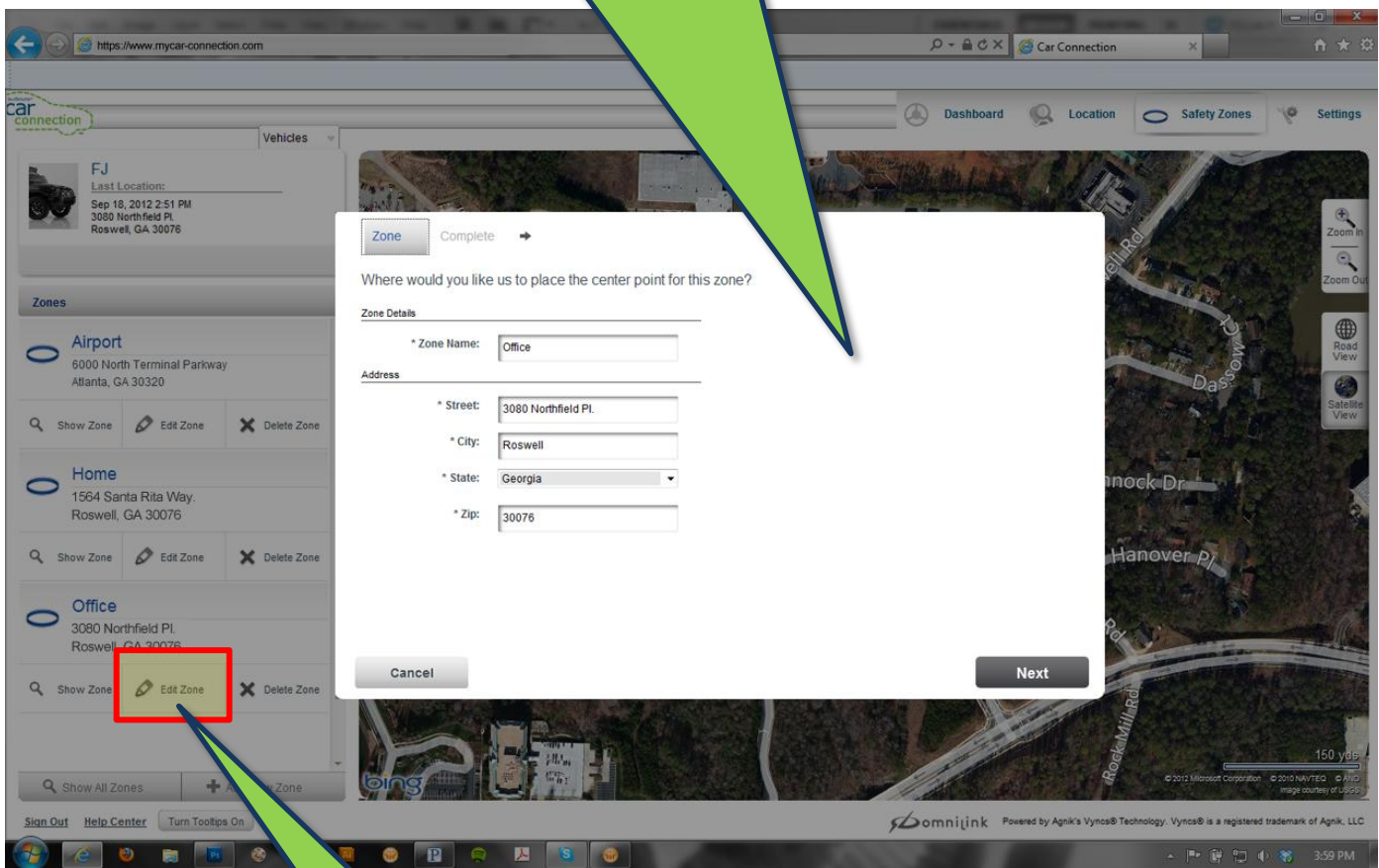
Finished

That's all there is too creating Safety Zones.

Safety Zones Edit Screen

Edit Zone

From time to time you may want to edit or change the diameter of a specific zone. Click on the "Edit Zone" button and the edit light box pops up.

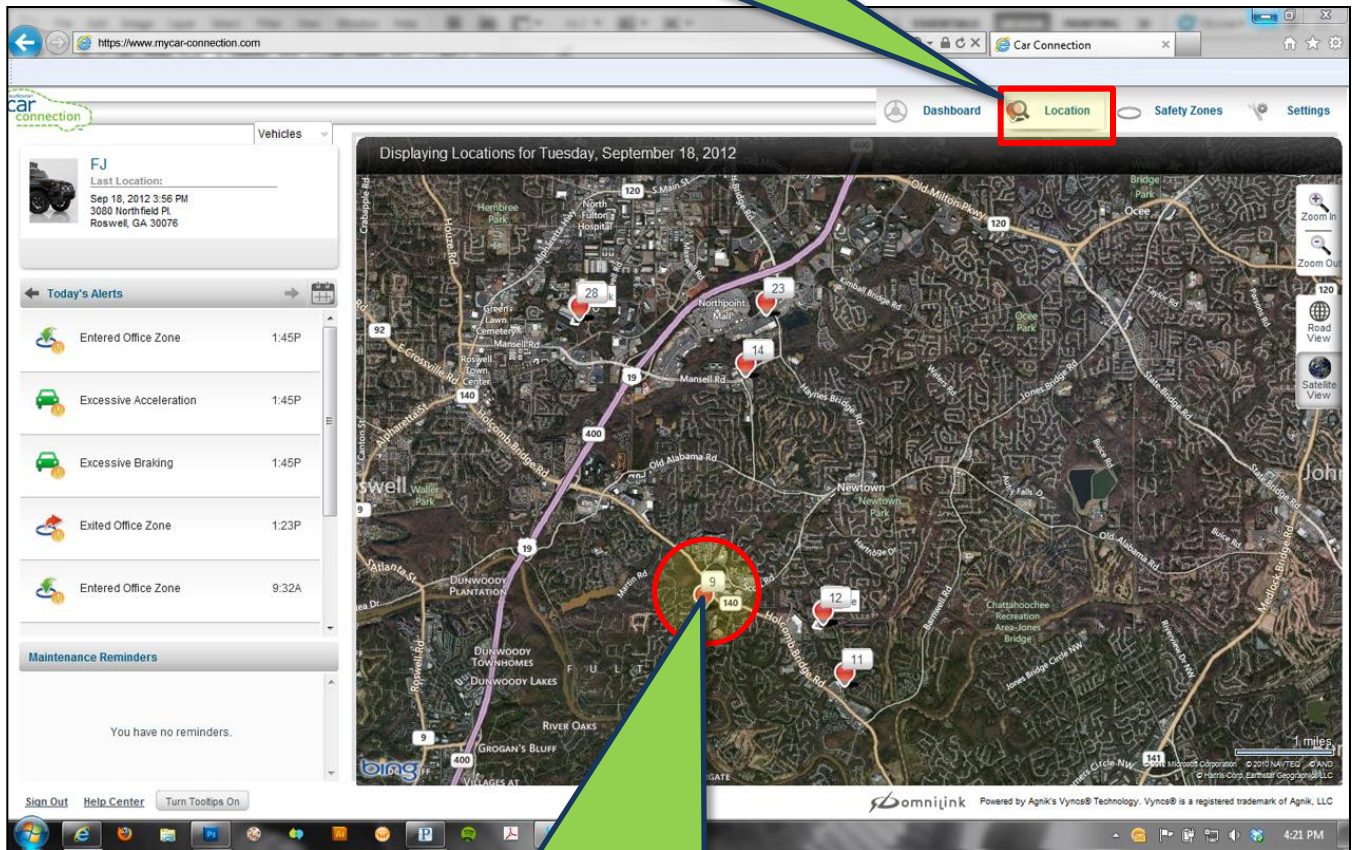


Edit Button

Location Screen

Screen Access

You can access the Location screen from either the home page or by clicking on this icon at any time.



Locations

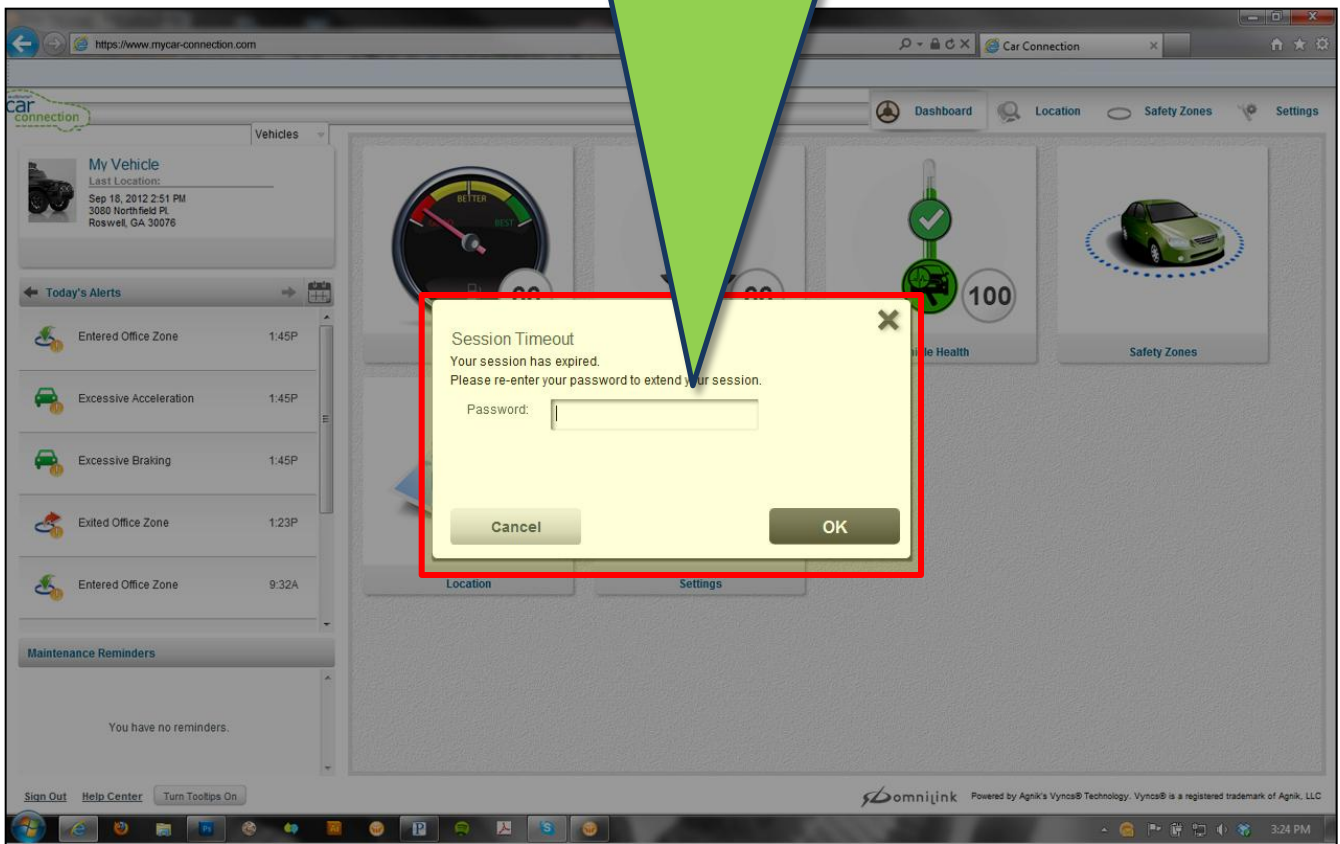
While running, Car Connection tracks the vehicle every 5 minutes and places a point on the map. The smaller the number the older the location.

***TIP – The point in blue is your last reported location**

Session Timeout

Portal Inactivity

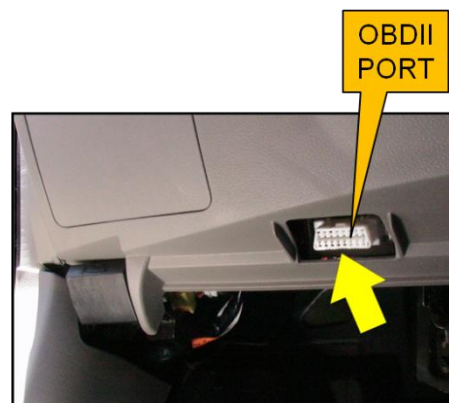
If left unattended, your Car Connection portal will “timeout”. This is to protect the user’s account. To extend your session, you will be asked to re-enter your password.



Installation & Support:

Car Connection plugs directly into the vehicles OBDII port under the dash which is located within 3 feet of the driver's seat – *NO tools are required to access*

*For certain applications, the Car Connection module may interfere with driver's knees or the customer may want to hide the module. For those instances a "Y-harness" may be purchased as an additional accessory



For customer or technical support please call
Audiovox Car Connection support
1-800-300-4550

9am – 9pm (Eastern) Mon – Friday
10am – 2pm (Eastern) Sat

Also visit www.mycar-connection.com for online FAQs