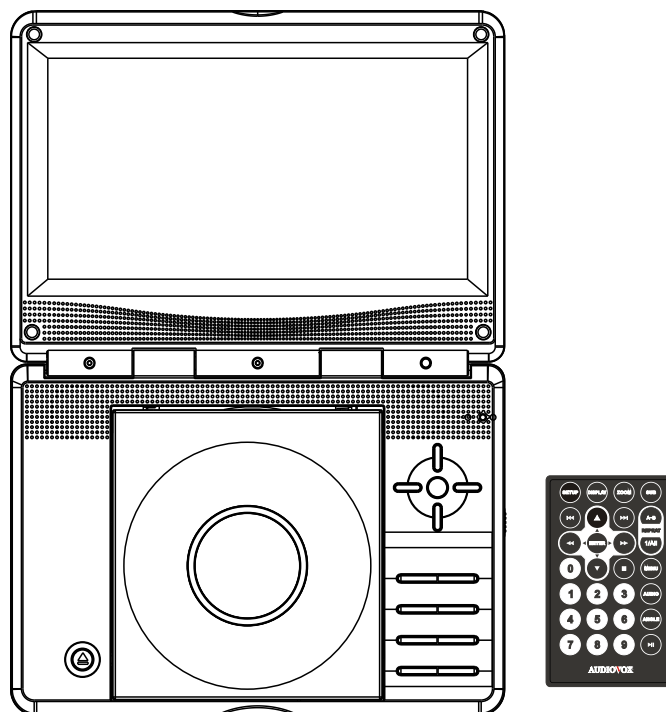


**AUDIOVOX®**  
CORPORATION

# Operation Manual

## PORTABLE DVD PLAYER

**Model: D1998PK**



READ THESE INSTRUCTIONS THOROUGHLY PRIOR TO CONNECTING AND OPERATING YOUR DVD PLAYER.

PLEASE RETAIN THIS MANUAL IN CASE YOU NEED IT FOR FUTURE REFERENCE.

THE ILLUSTRATIONS AND GRAPHICS IN THE MANUAL ARE FOR REFERENCE ONLY AND SUBJECT TO CHANGE WITHOUT NOTICE.

**Notice:**

This Product incorporates copyright protection technology that is protected by method claims of certain U.S. Patents and other intellectual property rights owned by Macrovision Corporation and other rights owners. Use of this copyright protection technology must be authorized by Macrovision Corporation, and is intended for home and other limited viewing uses only unless otherwise authorized by Macrovision Corporation. Reverse engineering or disassembly is prohibited.

**Notice:**

An LCD panel and/or video monitor may be installed in a motor vehicle and visible to the driver if the LCD panel or video monitor is used for vehicle information, system control, rear or side observation or navigation. If the LCD panel or video monitor is used for television reception, video or DVD play, the LCD panel or video monitor must be installed so that these features will only function when the vehicle is in "park" or when the vehicle's parking brake is applied.

An LCD panel or video monitor used for television reception, video or DVD play that operates when the vehicle is in gear or when the parking brake is not applied must be installed to the rear of the driver's seat where it will not be visible, directly or indirectly, to the operator of the motor vehicle.

**Notice:**

The D1998PK DVD Player contains a built in battery. To obtain the best performance from your DVD Player please refer to the following battery care instructions:

**CHARGING THE D1998PK**

When charging the DVD Player the power switch should be set to off. The DVD Player can be charged using the AC to DC adaptor or the vehicle DC power adaptor. When the battery is fully discharged the unit will require approximately 8 hours to fully recharge the battery. While the unit is charging the LED indicator will blink. Once the unit is fully charged the LED will remain on. When the battery is fully charged, the unit will play for approximately 2.5 hours. You should charge the unit once a month to ensure the unit will be operational for 2 hours.

Do not charge the DVD Player in the vehicle when the vehicle is not running

## **Introduction**

Thank you for selecting the D1998PK portable DVD Player. The main features include a 9" Screen (16:9 Aspect Ratio) Liquid Crystal Display (LCD) monitor and a DVD Player. The unit applies the latest state of the art electronics and is designed for use in hotels, offices, home or vehicle. The unit is constructed to provide years of reliable, trouble-free service, and is compact so that you can take it with you anywhere and is designed for quick and easy installation. Please read the entire instruction manual supplied with this product prior to operation. The documentation will assist you in installing the system properly to obtain the best equipment performance. Please save this manuals for later use.

## **Cautions and Warnings**

### **1. Placement**

To prevent fire or electric shock, do not expose this appliance to rain or moisture. Do not place the set on an unstable cart, stand, tripod, bracket or table to prevent it from falling. Keep the unit away from strong magnets, heat sources, direct sunlight, excessive dust. If the unit is brought directly from a cold to a warm location, moisture may condense inside the unit. When you move it from a cold to a warm location, wait for about one hour before operating the unit, or remove the disc and leave the unit turned on until the moisture evaporates.

### **2. Installation**

Ensure that the D1998PK is installed and used in accordance with the instructions and illustrations provided in this manual.

### **3. Objects and Liquids**

Do not push objects of any kind into the unit through openings; do not spill or spray liquid of any kind on or in the system (this may result in a fire or electric shock). Do not place anything heavy on the unit. To ensure proper ventilation and proper operation, never cover or block the slots and openings with a cloth or other material.

### **4. Disassembly**

Do not attempt to disassemble the cabinet or replace the battery. There is a risk of electric shock and/or exposure to Laser Radiation. Contact qualified service personnel if your system is in need of repair.

### **5. Cleaning Unit**

When cleaning, make sure the system is unplugged from the power source. Do not use liquid cleaners or aerosol cleaners. Use a cloth lightly dampened with water for cleaning the exterior of the DVD Player system only.

### **6. Disc**

Do not use irregularly shaped discs such as heart or star-shaped discs as they may cause the unit to malfunction. Do not stick paper, tape or glue on the disc. Do not expose the disc to direct sunlight or heat sources such as hot air ducts. Do not touch the surface of disc. Handle the disc by its edge. Clean the disc by wiping the disc from the center out with a cleaning cloth. Remove the disc from the unit and store it in its case after playing. Some playback operations of discs may be intentionally fixed by software producers. Since this unit plays discs according to the disc contents the software producers designed, some playback features may not be available. Also refer to the instructions supplied with the discs.

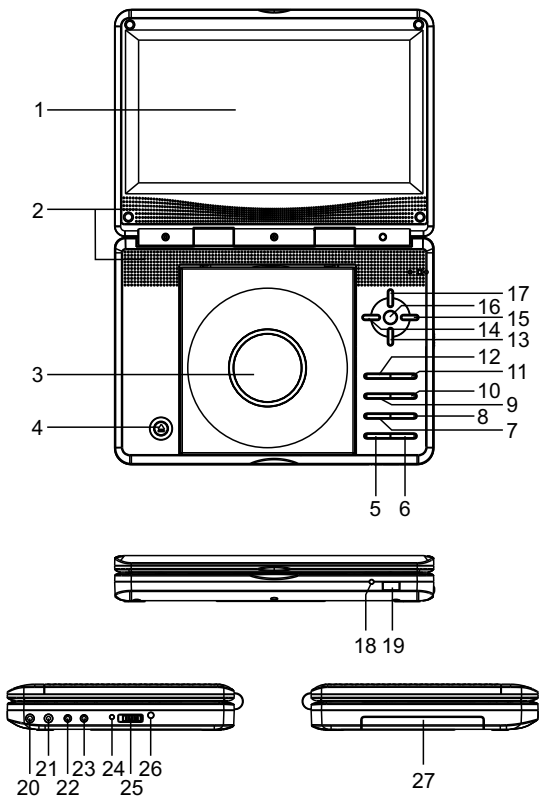
### **7. Regional Coding**

Both the DVD Player and disc are coded by region. These regional codes must match in order for the disc to play. If the codes don't match, the disc won't play. This unit's code is region 1. DVD's with other regional codes cannot be played in this unit.

## **Contents**

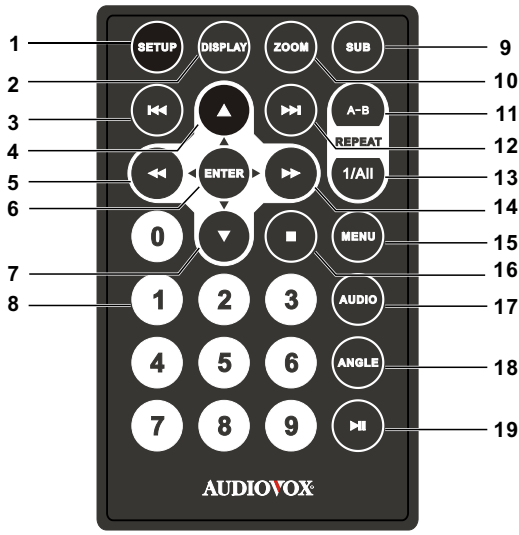
1. 1 x 9" LCD Monitor and DVD Player With Built-In Battery
2. 1 x AC to DC Adapter
3. 1 x Remote Control w/Battery (CR2025)
4. 1 x Instruction Manual
5. 1 x Audio/Video Cable
6. 1 x DC Power Adapter
7. 2 x Wired Headphones
8. 1 x Carry Bag With Straps

OVERVIEW OF THE DVD PLAYER:



- 1. LCD SCREEN
- 2. SPEAKERS
- 3. DISC COVER
- 4. DISC COVER OPEN BUTTON
- 5. VOLUME DOWN BUTTON
- 6. VOLUME UP BUTTON
- 7. ZOOM & SLOW BUTTON
- 8. REPEAT & DISPLAY BUTTON
- 9. MENU & TITLE BUTTON
- 10. AUDIO & SUBTITLE BUTTON
- 11. STOP & BUTTON
- 12. SETUP & SEARCH BUTTON
- 13. NAVIGATION DOWN & FAST BACKWARD BUTTON (◀◀)
- 14. NAVIGATION LEFT & PREVIOUS BUTTON (◀)
- 15. NAVIGATION RIGHT & NEXT BUTTON (▶)
- 16. OK (PLAY/PAUSE) BUTTON
- 17. NAVIGATION UP & FAST FORWARD BUTTON (▶▶)
- 18. POWER INDICATOR
- 19. REMOTE SENSOR
- 20. HEADPHONE JACK
- 21. HEADPHONE JACK
- 22. AUDIO OUT JACK
- 23. VIDEO OUT JACK
- 24. CHARGE INDICATOR
- 25. POWER ON/OFF SWITCH
- 26. DC IN 9V JACK
- 27. BATTERY COMPARTMENT

Remote control unit

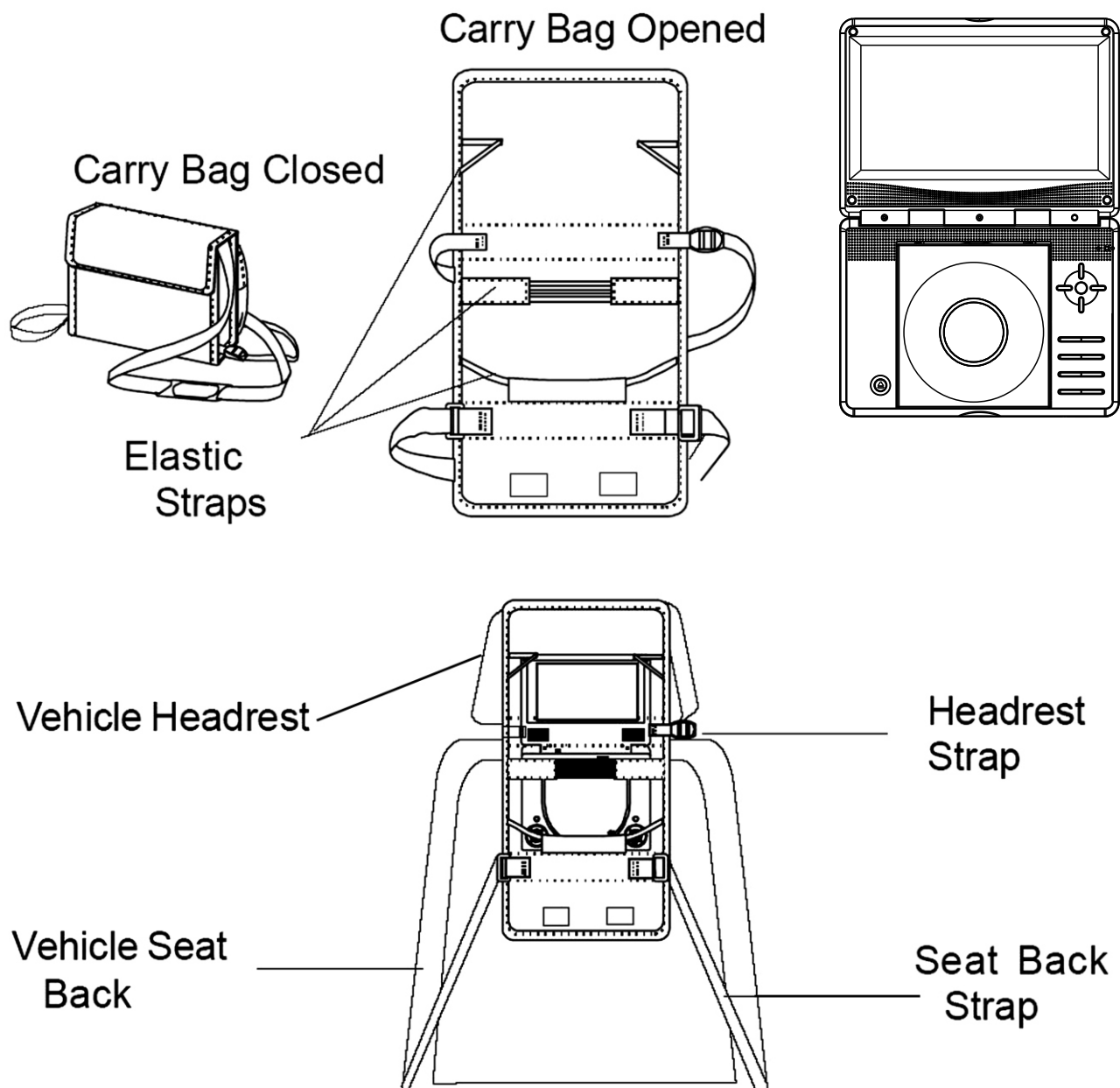


- 1. SETUP BUTTON
- 2. DISPLAY BUTTON
- 3. PREV. BUTTON (◀◀)
- 4. NAVIGATION UP BUTTON (▲)
- 5. NAVIGATION LEFT & F.BWD BUTTON (◀◀)
- 6. OK/ENTER BUTTON
- 7. NAVIGATION DOWN BUTTON (▼)
- 8. NUMERIC BUTTONS
- 9. SUBTITLE BUTTON
- 10. ZOOM BUTTON
- 11. REPEAT A-B BUTTON
- 12. NEXT BUTTON (▶▶)
- 13. REPEAT 1/ALL BUTTON
- 14. NAVIGATION RIGHT & F.FWD BUTTON (▶▶)
- 15. MENU BUTTON
- 16. STOP BUTTON (■)
- 17. AUDIO BUTTON
- 18. ANGLE BUTTON
- 19. PLAY/PAUSE BUTTON (▶▶)

## VEHICLE INSTALLATION:

### INSTALLING THE DVD PLAYER ON A SEAT BACK IN A CAR

1. Unfold the carry bag, and place the DVD Player on the bag beneath the elastic straps. Ensure that the unit's corners are secured by the elastic straps.
2. Secure the upper portion of the carry bag to headrest support bars using the headrest strap. Adjust the headrest strap until the bag is firmly secured.
3. Secure the lower portion of the carry bag to the vehicle seat back using the seat back strap. Adjust the seat back strap until the bag is firmly secured.



## CONNECTING THE DVD PLAYER TO OTHER DEVICES

When connecting the DVD Player to a TV ensure that the DVD Player and other devices (TV set and/or amplifier) to be connected to the DVD Player are set to OFF.

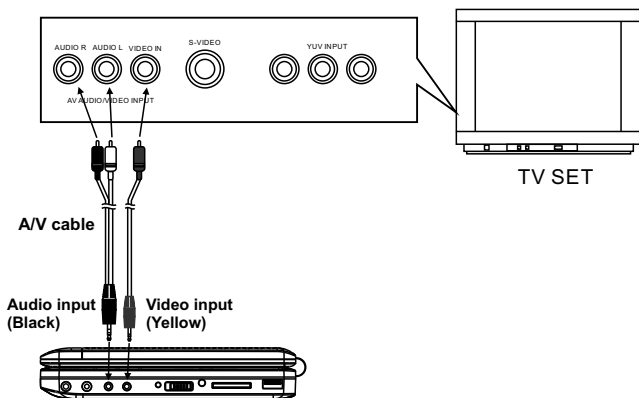
Avoid blocking ventilation holes of the connected devices and ensure that air can circulate freely.

Observe wire color coding when connecting audio and video cables.

(Yellow - Video)

(Red - Audio Right)

(White - Audio Left)



Power on the TV set and select video input mode.

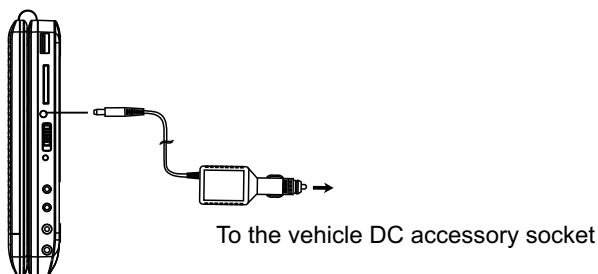
Power on the audio system which is connected to the unit.

## CONNECTING TO THE VEHICLE DC ADAPTOR

The vehicle power adaptor is designed for use with vehicles that have a 12V or 24V, negative ground electrical system.

**WARNING:**

Disconnect the car power adaptor when not in use.



### CAUTION:

- Use the unit only with the supplied car power adaptor, use with other car power adaptors could damage the unit.
- The recommended car power adaptor is for use with this unit only. Do not use it with other equipment.
- In the interest of traffic safety, do not operate the unit or view the video while driving a vehicle.
- Make sure the unit is fastened securely to prevent it from moving from its mounting location in the vehicle in the event of an accident.
- After use, disconnect the car power adaptor from both the unit and vehicle DC power adaptor socket.

### FUSE REPLACEMENT



## CHARGING THE D1998PK

When charging the DVD Player the power switch should be set to off. The DVD Player can be charged using the AC to DC adaptor or the vehicle DC power adaptor. When the battery is fully discharged the unit will require approximately 8 hours to fully recharge the battery. The battery must be charged at least 8 hours prior to first use. While the unit is charging the LED indicator will blink. Once the unit is fully charged the LED will remain on. When the battery is fully charged, the unit will play for approximately 2.5 hours. You should charge the unit once a month to ensure the unit will be operational for 2 hours. Do not charge the DVD Player in the vehicle when the vehicle is not running.

**NOTE:** If you plan not to use the battery for an extended period of time (one week or longer), we recommend that you fully charge the battery. For longer periods of storage, please recharge the battery at least once every two months to maintain the battery in optimum condition.

### Precautions related to Battery Recharge:

1. Once the battery is fully discharged, immediately recharge (regardless of whether you plan to use battery or not) in order to maximize battery life.
2. Recharge efficiency will degrade when environmental temperatures drop below 50°F (10°C) or exceed 95°F (35°C).
3. During this period, please recharge the battery at least once every two months to avoid irreparable to the battery.

## OPERATION

### GETTING STARTED

1. Slide the POWER switch to turn on the unit.
2. Press the OPEN button to open the disc tray.
3. Place a disc onto the disc cover hub with label side up.
4. Close the disc cover and playback will start automatically.
5. When the DVD menu screen appears, use the navigation buttons to select a preferred chapter number, then press OK (PLAY/PAUSE) (▶||) button to start playback.

### ADJUST THE VOLUME

Press the VOLUME UP (+)/DOWN (-) buttons to increase or decrease the volume.

### SKIP AHEAD OR BACK (▶▶) (◀◀)

Press the NEXT (▶▶) or PREV (◀◀) button once during playback to skip forward or backwards. DVDs have chapters and CDs have tracks.

### RAPID FAST FORWARD/ REVERSE

To scan the disc forward or backward at X2, X4, X8, X16, X32 normal speed during playback, press the F.FWD button (▶▶▶) or F.BWD button (◀◀◀) on the main unit or press and hold the F.FWD button or F.BWD (▶▶▶) button on the remote control several times.

Press OK (PLAY/PAUSE) (▶||) button to resume normal play.

### STOP PLAYBACK

Press the STOP button to stop playback; the DVD Player will activate its resume function when the STOP button is pressed. Press the OK (PLAY/PAUSE) (▶||) button and playback will resume from the point it was stopped. Open the disc tray or press the STOP (■) button one more time to clear the resume function.

### SLOW-MOTION PLAY (DVD)

Press and hold the ZOOM/SLOW button during playback, the disc will be played at 1/2 normal speed at first. Each time the button is pressed, the playback speed will become slower at 1/4, 1/8, 1/16 increments of normal speed.

- 5 Press the OK (PLAY/PAUSE) (▶||) button and normal play will resume.

## REPEAT

Press REPEAT 1/all button during play, it will repeat play one chapter/title or repeat all (for DVD disc), or repeat play a track or all tracks (for CD).

## A-B Repeat Play

Repeating sections between two specific points(A-B repeat)

1. Press REPEAT A-B button during play at the point where repeat play is to be started(A).
2. Press REPEAT A-B button at the point where repeat play is to be ended (B). Repeat play of the selection between points A and B starts.
3. Press REPEAT A-B button to return to normal play.

## SEARCH FOR A SCENE

1. Press and hold SETUP&SEARCH button on the unit several times during playback until the desired scene is displayed on the screen.
2. Input the desired number or time using the numeric buttons.
3. Press OK (PLAY/PAUSE) (▶||) button to confirm and the playback from the desired scene will start.
4. The Search menu will automatically clear if no buttons are pressed on the remote control or the unit.

## ZOOM PLAY

Press the ZOOM/SLOW key repeatedly to enlarge (zoom in) the picture by 2, 3, and 4 times normal size, or reduce (zoom out) by 1/2, 1/3, 1/4 normal size.

Press this key once more when the picture is at 1/4 size and the picture will return to normal size.

The enlarged pictured can be scrolled using the Navigation buttons.

## ON SCREEN DISPLAY INFORMATION

When the DVD Player is in operation, press the DISPLAY button on the remote control or press and hold AUDIO&DISPLAY button on the main unit. The screen will display DVD information (title number, chapter number, title elapsed time, remaining title time, chapter elapsed time, and remaining chapter time).

## CHANGING AUDIO SOUNDTRACK LANGUAGE (DVD)

The audio soundtrack language can be changed to a different language from the one selected at the initial settings (This function is only available on discs which contain multiple audio soundtrack languages.

- Press the AUDIO button during DVD disc play, the sound track language changes with the current sound track number shown on the TV screen.
- Pressing the AUDIO button during CD disc play will change audio output mode: MONO L, MONO R, MIX-MONO and stereo.

**NOTE: When no soundtrack languages are recorded, on the disc, the AUDIO button will be non -operational.**

## MULTI-ANGLE VIEWING (DVD ONLY)

Press the ANGLE button during playback to display the number of angles being played and then select the desired angle to view the scene.

**NOTE: Only DVDs initially shot with multi-angle scenes will have this function.**

## CHANGING SUBTITLE LANGUAGE (DVD ONLY)

Press the SUBTITLE button on the remote or press and hold AUDIO and SUBTITLE button on the main unit during playback. The subtitle language shown on the screen will change when the button is pressed. When the desired language appears, release the button to view subtitles in that language.

**NOTE: Only DVDs recorded with multi-language subtitles will have this function.**

## JPEG PLAYBACK

Picture slide shows begin automatically after the CD containing the images is loaded into the DVD Player. JPEG images contained in the folders are displayed on the LCD screen. Use the navigation buttons to select the desired folder and then press OK (PLAY/PAUSE) (▶||) button to confirm.

The files in this folder are displayed and you can select your favorite pictures using the up/down navigation buttons and press OK (PLAY/PAUSE) (▶||) button to start playback.

A preview of the picture will be displayed while you scroll across the filenames.

## VIEWING JPEG FILES

### 1. PLAY MODES

During playback, press the STOP (■) button to enter preview mode

### 2. SKIP TO NEXT/PREVIOUS PICTURE

Press the NEXT (▶▶) button to skip to the next picture or the PREV (◀◀) button to access the previous picture.

If no key is pressed for a few seconds, the DVD Player will skip to next picture automatically.

### 3. ROTATE PICTURES

Press right navigation (:) button to rotate the picture Clockwise and the left navigation (9) button to rotate the picture Counterclockwise.

### 4. HORIZONTAL AND VERTICAL PICTURE ROTATION

Press up navigation (p) button to rotate the picture vertically. Press DOWN navigation (q) button to rotate the picture horizontally.

### 5. PICTURE ZOOM IN/OUT

Press ZOOM/SLOW button and the picture will zoom in and out as the button is pressed. When the picture is enlarged, you may use the navigation buttons to view parts of the picture that are out of the image area.

# INITIAL SETTINGS

Initial settings allow you to personalize the DVD player settings to your preference. Once the initial settings are set they are retained in the DVD Player until modified.

## ADJUSTING INITIAL SETTINGS

1. Press SETUP button.
2. Use the navigation buttons to select the feature you want to modify. Use the navigation buttons to perform changes. Press OK (PLAY/PAUSE) (▶II) button to confirm modifications.
3. Use navigation buttons to switch to another feature setting on the main page.
4. Press SETUP button to exit main page.

### 1. General Setup

General Setup Page	
TV Display	Wide
Angle Mark	ON
OSD Lang	ENG
Screen Saver	ON

**1.1 TV DISPLAY** - Used to select the TV output mode.

Options: 4:3PS: Pan & scan mode

4:3LB: Letter box mode

WIDE16:9 Wide screen mode

**1.2 ANGLE MARK** - Used to determine whether or not the DVD disc contains the multi-angle feature. If the feature is present the icon will be displayed on the screen.

On: Icon will be displayed

Off: Icon will be turned off

**1.3 OSD LANG** - Used to select different On Screen Display languages.

**1.4 SCREEN SAVER** - When the DVD Player is inactive for several minutes, a DVD logo will scroll across the screen.

Options: On: Screen saver is enabled

Off: Screen saver is disabled

### 2. Speaker Setup

Speaker Setup Page	
Downmix	LTRT

**2.1 Downmix**

Options: LT/RT-Left/Right speaker balance mode

STEREO - Select this option if you don't have a 5.1 channel amplifier.

### 3. Video setup

Video Setup Page	
Brightness	00
Contrast	01
Hue	01
Saturation	01

**3.1 BRIGHTNESS** - Adjusts the brightness of the screen.

**3.2 CONTRAST** - Adjusts the contrast of the screen.

**3.3 HUE** - Adjusts the hue of the screen.

**3.4 SATURATION** - Adjusts the saturation color level of the screen.

### 4. Preference setup

To set the DVD Player to your preferences press the power button on the front panel. Do not place a disc in the DVD Player. Press the SETUP button and access the Preference Page. Select the various functions to be adjusted using the navigation buttons.

Preference Page	
TV Type	NTSC
Audio	ENG
Subtitle	OFF
Disc Menu	ENG
Parental	
Default	

**4.1 TV TYPE**

Options: PAL/MULTI/NTSC

**4.2 AUDIO** - Selects the audio language on a DVD which contains multiple language.

**4.3 SUBTITLE** - Selects the preferred subtitle language on a DVD which contains multiple subtitle language.

**4.4 DISC MENU** - Selects the menu language on a DVD which contains multiple menu languages.

**4.5 PARENTAL** - Selects the viewing rating levels of DVD which contains rating levels.

**4.6 DEFAULT** - Restores all settings to factory settings

### 5. Password Setup

Password Setup Page	
Password Mode	
Password	

**5.1 PASSWORD MODE**

Options: ON/OFF

**5.2 PASSWORD**

Option: Change

Select to change password

**5.2.1 OLD PASSWORD**

**5.2.2 NEW PASSWORD**

**5.2.3 CONFIRM PWD**

**Changing Password Procedure :**

1) Enter the old password in the OLD PASSWORD.

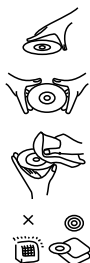
2) Enter new password in the NEW PASSWORD.

3) Enter the new password again in CONFIRM PWD.

You may reset the password at any time by using the default password. The default password is: 3308



# DISC HANDLING PRECAUTIONS



Hold discs by the edge so the surface will not be soiled with finger prints. Finger prints, dirt and scratches can cause skipping and distortion.

Do not write on the label side with a ball-point pen or other writing utensils.

Do not apply benzine, thinner or other liquids that will damage the disc.

Be careful not to drop or bend the disc.

Install only one disc on the disc tray.

Do not try to close the disc tray when the disc is not seated properly.

Be sure to store the disc in it's case when not in use.

## WIRED HEADPHONES

To listen to the DVD audio output using the headphones plug the headphone plug into Headphone jack 1 or Headphone jack 2. When the headphones are plugged into either jack the speakers are disabled.

## CAUTION

BE sure to set the headphone volume to its lowest setting before plugging in the Headphone jack to avoid volume levels that could cause damage to hearing.

## TROUBLESHOOTING

If your DVD Player does not seem to be functioning properly, check the items below before you contact Audiovox Tech Support.

Symptom	Check
Player does not turn on or suddenly turns off.	<ul style="list-style-type: none"><li>• Make sure the AC adapter is securely plugged into an AC outlet.</li><li>• Turn the power off and then back on.</li><li>• Check that the battery pack is charged. If not, recharge it.</li></ul>
Remote control won't work.	<ul style="list-style-type: none"><li>• Check that the battery is inserted correctly observing polarity "+" and "-."</li><li>• The battery may be defective. Replace it with a new one.</li><li>• Check that the transmitted signal is directed at the remote control sensor on the DVD Player.</li><li>• Remove any obstacles between the remote control and remote control sensor on the DVD Player.</li></ul>
No picture or sound	<ul style="list-style-type: none"><li>• Check that the Audio/Videos cables are securely connected.</li><li>• Check that the disc is a DVD (region number 1 or all) or an Audio CD.</li><li>• Do not use a disc that contains scratches or dirt.</li><li>• Check that the label-side of the disc is facing up.</li><li>• Check that the TV channel is set to VIDEO or AV if using the DVD Player with a TV.</li><li>• Check that headphones are not plugged into the unit.</li></ul>
No picture	<ul style="list-style-type: none"><li>• Check that the screen display is on.</li></ul>
No sound	<ul style="list-style-type: none"><li>• Check that the DVD Player display panel is in the open position. If closed, the audio will be muted.</li></ul>
	<ul style="list-style-type: none"><li>• Check the volume setting. If set to the lowest setting, turn up volume level.</li></ul>
	<ul style="list-style-type: none"><li>• Check that the headphones are plugged into the PHONES jack. Speakers cannot be used with the headphones plugged in .</li></ul>
No picture and sound	<ul style="list-style-type: none"><li>• Check that the battery is properly installed and AC Adapter is properly connected.</li></ul>
Distorted video or sound	<ul style="list-style-type: none"><li>• Use a disc without scratches or dents.</li></ul>

AUDIOVOX ELECTRONICS CORP. (the Company) warrants to the original retail purchaser of this product that should this product or any part thereof, under normal use and conditions, be proven defective in material or workmanship within 12 months from the date of original purchase, such defect(s) will be repaired or replaced with reconditioned product (at the Company's option) without charge for parts and repair labor. A game controller, if supplied, is similarly warranted for ninety (90) days.

To obtain repair or replacement within the terms of this Warranty, the product is to be delivered with proof of warranty coverage (e.g. dated bill of sale), specification of defect(s), transportation prepaid, to the Company at the address shown below.

This Warranty does not extend to the elimination of externally generated static or noise, to correction of antenna problems, to costs incurred for installation, removal or reinstallation of the product, or to damage to digital memory/media devices, gaming devices, discs, speakers, accessories, or electrical systems.

This Warranty does not apply to any product or part thereof which, in the opinion of the Company, has suffered or been damaged through alteration, improper installation, mishandling, misuse, neglect, accident, or by removal or defacement of the factory serial number/bar code label(s). THE EXTENT OF THE COMPANY'S LIABILITY UNDER THIS WARRANTY IS LIMITED TO THE REPAIR OR REPLACEMENT PROVIDED ABOVE AND, IN NO EVENT, SHALL THE COMPANY'S LIABILITY EXCEED THE PURCHASE PRICE PAID BY PURCHASER FOR THE PRODUCT.

This Warranty is in lieu of all other express warranties or liabilities. ANY IMPLIED WARRANTIES, INCLUDING ANY IMPLIED WARRANTY OF MERCHANTABILITY, SHALL BE LIMITED TO THE DURATION OF THIS WRITTEN WARRANTY. ANY ACTION FOR BREACH OF ANY WARRANTY HEREUNDER INCLUDING ANY IMPLIED WARRANTY OF MERCHANTABILITY MUST BE BROUGHT WITHIN A PERIOD OF 24 MONTHS FROM DATE OF ORIGINAL PURCHASE. IN NO CASE SHALL THE COMPANY BE LIABLE FOR ANY CONSEQUENTIAL OR INCIDENTAL DAMAGES FOR BREACH OF THIS OR ANY OTHER WARRANTY. No person or representative is authorized to assume for the Company any liability other than expressed herein in connection with the sale of this product.

Some states do not allow limitations on how long an implied warranty lasts or the exclusion or limitation of incidental or consequential damage so the above limitations or exclusions may not apply to you. This Warranty gives you specific legal rights and you may also have other rights which vary from state to state.

**U.S.A.:** AUDIOVOX ELECTRONICS CORPORATION, 150 MARCUS BLVD. HAUPPAUGE, NEW YORK 11788 1-800-645-4994.

**128-5495F**

This page intentionally left blank

