



QuickStartGuide

TH11 series
www.rcaaudiovideo.com

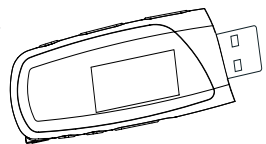
Congratulations on purchasing your new RCA player.

Please read these instructions for quick tips on using the player.

Getting Started

1. Install the PC software from the CD* before connecting your player.
2. Remove the cap of the USB jack and connect your player to your computer.

The player



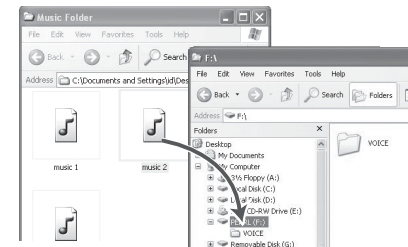
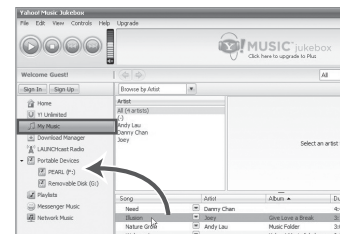
USB port of
your
computer

*accessory supplied


Tocom: 56429310 (EN/E)

3. Download audio files to your player using any of the two methods below (in Windows 2000 or Windows XP):

- **Yahoo! Music Jukebox™** (in Windows XP, installed from the CD): drag-and-drop audio files from your *My Music* library to the player.
- **Windows Explorer:** drag-and-drop audio files to the drive letter that is associated with the player.



- The player is also compatible with most PC music management softwares.
- For details on file transfer, refer to *Transferring Files to the Player* in the user manual on the CD.

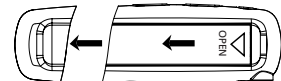
4. To disconnect the player from the computer, double click the left mouse button on the icon  from the System Tray, and select "Unplug or Eject hardware" for Windows 2000 or "Safely Remove Hardware" for Windows XP. Select the drive corresponding to your player and click STOP.



- The "Stop a Hardware player" screen will appear. Select the player to be stopped again for confirmation and click OK and disconnect your player from the computer.



5. To install the battery into the player, remove the cap of the USB jack of the player.
- Apply thumb pressure to slide the battery door in the direction of the arrow, then lift the battery door out and off the cabinet.
- Insert the supplied "AAA/LR03/UM4" battery following the polarities as displayed in the battery compartment and close the battery door. Replace the cap of the USB jack and enjoy music on the go.



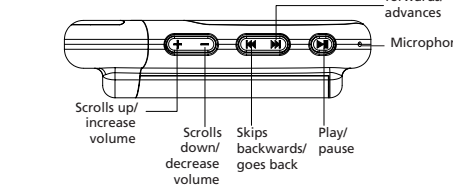
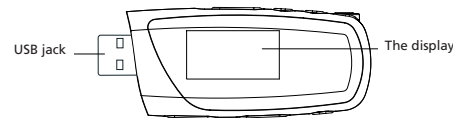
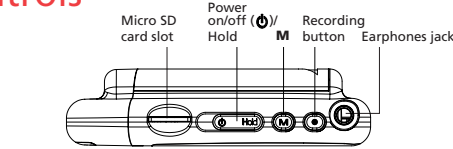
Learn more about the player

- Read the user manual on the CD for more information on the player's features, safety and warranty information, and answers to Frequently Asked Questions (FAQ).

Need more help? Do not return this product to the store.

- Visit www.rcaaudiovideo.com/digitalaudiosupport for the latest firmware, driver downloads and FAQ
- Contact RCA Customer Support at **1-866-449-7112**.

General controls





Turn on/off the player

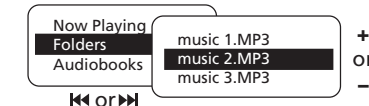
Slide Power on/off (Hold) to the left and hold







Lock the keys

Slide Power on/off (Hold) to the right

Browse for an audio file

Press  or  to go back or advance in the Home menu and press + or - to scroll up or down to the desired audio file



Play an audio file	Press 
Pause the playback	Press  , press again to resume
Adjust the volume	Press + or - during playback
Skip to the next audio file	Press 
Skip to the previous audio file	Press  within the beginning 4 seconds of the current audio file
Rewind or fast forward an audio file	Press and hold  or  during playback
Access the Home menu (to access the Folders, Audiobooks, Voice Recording and My Selections)	Press M twice in the playback screen
Access the Player's menu (to access the Shuffle, Repeat, DSP, Skipping, Clear MySel, Settings and System Info)	Press M in the playback screen

For information on new and upcoming products and to register your new player, visit www.rcaaudiovideo.com.

Thomson Inc.
P.O. Box 1976
Indianapolis, IN 46206-1976
© 2007 Thomson Inc.
Trademark Registered
Marca Registrada
Marque Déposée
www.rcaaudiovideo.com

