

RCA

Home Theater Music Jukebox User's Guide

Changing Entertainment. Again.



RTD750

Important Information

CAUTION

RISK OF ELECTRIC SHOCK DO
NOT OPEN



This symbol indicates important instructions accompanying the product.



This symbol indicates "dangerous voltage" inside the product that presents a risk of electric shock or personal injury.

WARNING

To reduce the risk of fire or electric shock, do not expose this product to rain or moisture. No objects filled with liquids, such as vases, should be placed on the apparatus.

CAUTION

FCC Regulations state that unauthorized changes or modifications to this equipment may void the user's authority to operate it.

CAUTION – To reduce the risk of fire, use only No. 26 AWG or larger telecommunication line cord.

ATTENTION – Pour réduire les risques d'incendie, utiliser uniquement des conducteurs de télécommunications 26 AWG ou de section supérieure.

Product Registration

Please fill out the product registration card (packed separately) and return it immediately. For U.S. customers: Your RCA Consumer Electronics product may also be registered at www.rca.com/productregistration. Registering allows us to contact you if needed.

Product Information

Keep your sales receipt to obtain warranty parts and service and for proof of purchase. Attach it here and record the serial and model numbers in case you need them. The numbers are located on the back of the product.

Model No.: _____

Serial No. _____

Purchase Date: _____

Dealer/Address/Phone: _____

CAUTION

THIS PRODUCT UTILIZES A LASER. USE OF CONTROLS OR ADJUSTMENTS OR PERFORMANCE OF PROCEDURES OTHER THAN THOSE SPECIFIED HEREIN MAY RESULT IN HAZARDOUS RADIATION EXPOSURE. DO NOT OPEN COVERS AND DO NOT REPAIR YOURSELF. REFER SERVICING TO QUALIFIED PERSONNEL.

Note:

This DVD player is designed and manufactured to respond to the Region Management Information. If the Region number of a DVD disc does not correspond to the Region number of this DVD player, this player cannot play the disc. The Region number for this DVD player is Region No 1.

**CLASS 1
LASER
PRODUCT**

Chapter 1: Connections and Setup

Things to Consider Before Connecting	
Components	3
Cables to Connect Components to Your Home	
Theater Music Jukebox	3
Front of the Home Theater Music Jukebox	4
Back of the Home Theater Music Jukebox	5
Description of Jacks	5
Connecting your Home Theater Music Jukebox	6
Positioning your Speakers	7
Connecting the Speakers	8
Connecting the Antennas	8
Connecting the Subwoofer	8
Put Batteries in the Remote Control	9
Turn on the TV and Home Theater	
Music Jukebox	9
Using the Remote Control to Choose On-screen	
Menu Items	9
How to Find Your TV's Video Input Channel	10
Introduction to Your Home Theater	
Music Jukebox	11
Demo Modes	11
What Is The Setup Process?	11
Running Quick Start	11
Introduction Screens	11
Completing Quick Start	12
Entering Text with the Number Buttons	
or Optional Keyboards	12
Internet Access through an ISP	12
Connection Method	12
Ethernet IP Addressing	13
Ethernet Settings	13
Broadband Access Provider	13
Broadband Login Info	13
Zip Code	14
Dial-up ISP	15
Internet Login Info	15
Dialing Preferences	16
Zip Code	16
The Buttons on the Remote Control	17
Frequently Used Buttons	17
Other Buttons on the Remote Control	18

Chapter 2: Music Features

Playing Music	19
Some Terms and Definitions You'll See in the	
Following Chapters	19
Navigating the Music Player Screen	19
Selecting and Listening to a Music Title	19
Sorting Music by Artist, Title, Song,	
Alphabetically	19
Recording Music	20
Music Compression and MP3 Audio Quality	20
Recording Music from a CD	20
Recording Music from an External Audio	
Device	21
Managing Music	21
Changing the View Mode	22
Creating a New Playlist	22
Editing a Playlist	22
Deleting a Playlist	23
Creating a New Music Group	23
Editing a Music Group	23
Deleting a Music Group	23
Changing the Play Mode	24
Deleting Music	24
Editing the Names of Tracks	25
Editing Disc Information	25
Transferring Music to a Portable Player	26

Chapter 3: Movie Features

Regional Coding	27
Using Different Menus	27
To Load and Play a DVD Disc	27
Search Options	28
Using the On-Screen Info Display	28
Selecting a Title	29
Selecting a Chapter	29
Changing the Audio Language	29
Selecting Subtitles	30
Changing the Camera Angle	30
Playing DVD Discs	31
Managing Movies	31
Creating a New Movie Group	31
Editing a Movie Group	32

(continued on the next page)

Table of Contents

Deleting a Movie Group	32
Getting Movie Info	33
Editing Movie Disc Info	33
Deleting Movies	33

Chapter 4: Radio Features

AM/FM Radio	34
Playing the Radio	34
Autotuning AM/FM Stations	34
Adding a New AM/FM Station	34
Editing an AM/FM Station	35
Deleting a Radio Station	35
Internet Radio	36
Playing Music	36
Updating Internet Radio Stations	36
Adding a New Internet Station	36
Editing an Internet Station	37
Deleting an Internet Station	37
Creating a New Radio Group	37
Editing a Radio Group	37
Deleting a Radio Group	38

Chapter 5: Advanced Features

Advanced Settings	39
User Information	39
Network Configuration	40
Preferences	42

Audio and Video Settings	44
Security and Parental Controls	47
Utilities	48

Chapter 6: Additional Information

Troubleshooting	50
Care and Cleaning	53
Handling Cautions	53
Maintenance of Cabinet	53
Formation of Condensation	53
Handling Discs	53
Cleaning Discs	53
Programming the Remote to Operate	
Other Components	54
Find Out If You Need to Program the Remote ..	54
Programming the Remote	54
How to Use the Remote After You've	
Programmed It	55
Code List	56
More from OpenGlobe Services	58
Compatible Optional USB Keyboards	58
Adding a New Internet Station	59
Locating Stations	59
FCC and Industry Canada Information	60
Additional FCC Information	61
Limited Warranty	62

Things to Consider Before Connecting Components

Protect Components From Power Surges

- Connect all components before plugging any power cords into the wall outlet.
- Always turn off the TV and other components before you connect or disconnect any cables.

Position Cables to Avoid Audio Hum or Interference

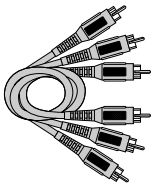
- Insert all cable plugs firmly into their jacks.
- Place any Audio/Video (A/V) cables to the side(s) of the TV's back panel instead of straight down the back after connecting components.
- Try not to coil any twin-lead antenna cables and keep them away from all cables as much as possible.
- Make sure all antennas and cables are properly grounded. Refer to the *Safety Tips* sheet packed with your unit for detailed information.

Protect Components From Overheating

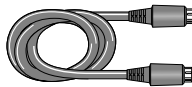
- Never block ventilation slots in any component. Arrange the components so that air can circulate freely.
- Do not stack components.
- Allow adequate ventilation when placing components in a stand.
- Place an amplifier or other hot component on the top shelf of a stand so heated air rising from it will not flow around other components.

Cables to Connect Components to Your Home Theater Music Jukebox

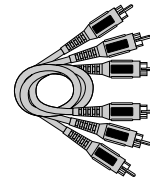
The pictures below show the cables that can be used for the connections represented in this book.



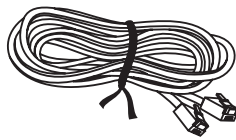
Audio/Video cables (included)



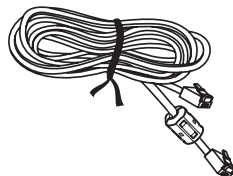
S-Video cable (included)



Component Video (Y•Pb•Pr) cables



26 AWG modem telephone line cord (included)



Ethernet cable with attached ferrite core filter (included)



Digital Optical cable



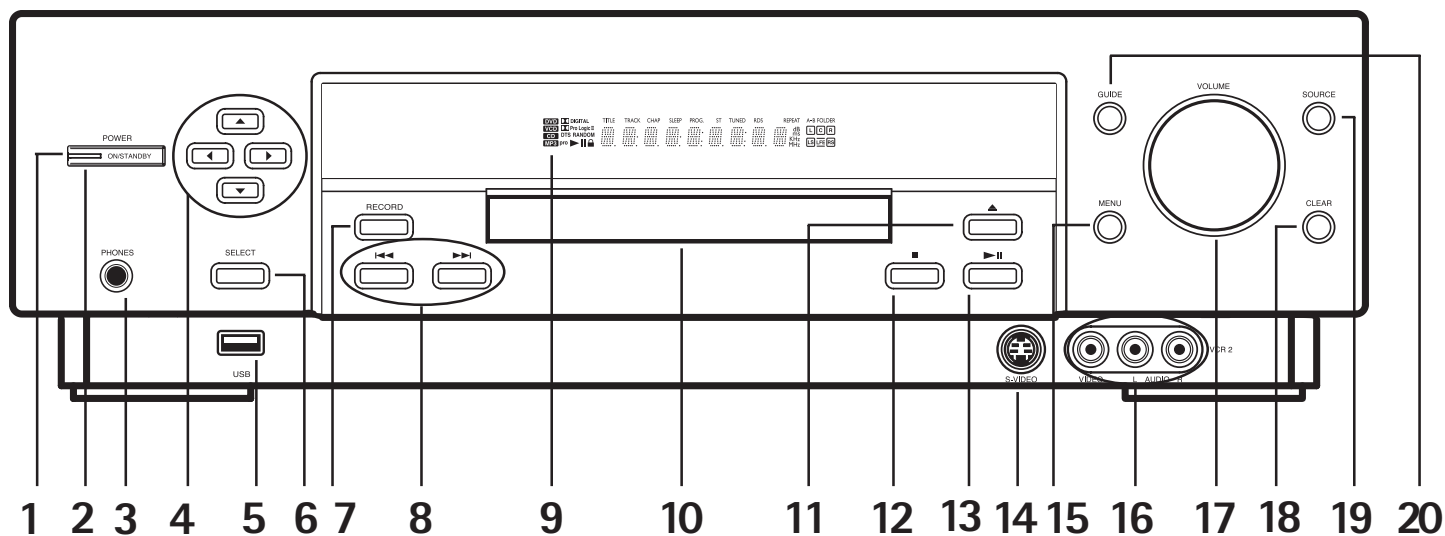
FM antenna (included)



Am loop antenna (included)

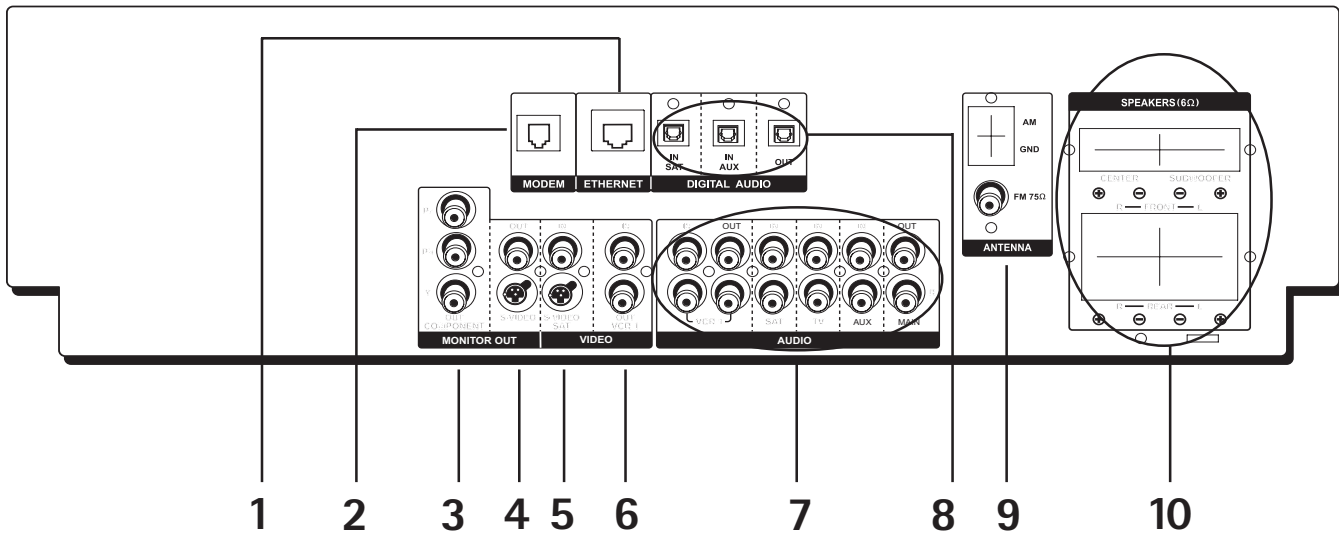


USB cable



Front of the Home Theater Music Jukebox

1. **POWER indicator** — Indicates when the unit is on or in standby.
2. **POWER** — Toggles the unit between on and standby.
3. **PHONES jack** — Allows you to connect headphones for private listening.
4. **Arrow buttons** — Move the on-screen highlight.
5. **USB jack** — Allows you to connect a keyboard or Lyra portable mp3 player or some USB keyboards.
6. **SELECT** — Selects menu choices when they are highlighted.
7. **RECORD** — Starts recording MP3s.
8. **Reverse and Forward buttons** — Search forward or backward during playback. Press and hold to skip audio tracks and movie chapters.
9. **Display**
10. **Disc tray**
11. **Open/Close** — Opens and closes the disc tray.
12. **Stop** — Stops the current function (record, play, etc.).
13. **Play / Pause** — Plays or pauses playback.
14. **VCR2 S-Video input jack** — Allows you to connect an S-video component.
15. **MENU** — Displays the on-screen menu system.
16. **VCR2 audio/video input jacks** — Allows you to connect an external audio or video component, such as a camcorder or video game system.
17. **VOLUME** — Raises and lowers the volume of the speakers.
18. **CLEAR** — Removes any menu or display from the screen and returns you to normal viewing. Also clears on-screen menu item entries.
19. **SOURCE** — Toggles between the available input sources (VCR, satellite, aux, etc.).
20. **GUIDE** — Toggles between the guide and player screens in Music, Movie, or Radio Modes.



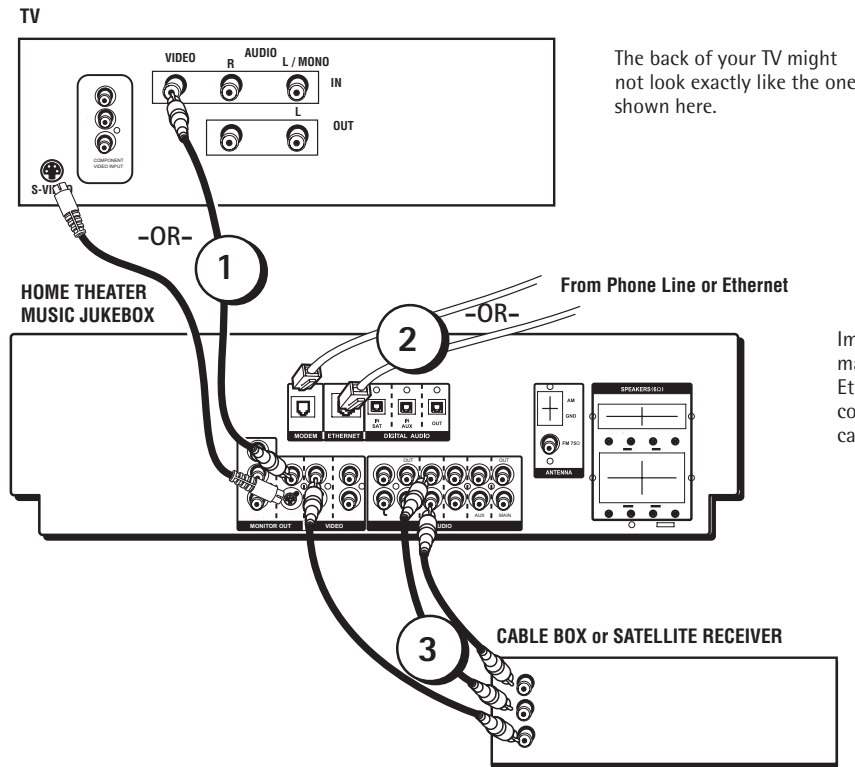
Back of the Home Theater Music Jukebox

When connecting, make sure you connect Output jacks to Input jacks, Video to Video, Right Audio to Right Audio, etc. A description of each jack follows.

Description of Jacks

1. **ETHERNET** – Connects to your home network or router using an Ethernet cable.
2. **MODEM** – Connects to your home telephone wiring for dial-up Internet access.
3. **Component Video Out jacks**– If your TV has component video input jacks, connect to your TV for optimum quality.*
4. **S-VIDEO OUT jacks** – If your TV has an S-Video input jack, connect to your TV for better picture quality than using the VIDEO jack.
5. **S-VIDEO IN jacks** – If your video source component (e.g. cable box or satellite receiver) has an S-Video output jack, connect it to this S-Video input for better quality than composite video.
6. **VIDEO IN and OUT jacks** – Allows you to connect a VCR and send the signal to your TV.
7. **Audio Input jacks (VCR, SAT, TV, AUX)** – Connects to your audio input sources.
8. **DIGITAL AUDIO IN/OUT jacks** – Connects to your digital audio input sources and connects your jukebox to a receiver or decoder with Dolby Digital capability using a digital connection.
9. **ANTENNA jacks** – Allow you to connect AM/FM antennas for better radio reception (see page xx for installation instructions).
10. **Speaker jacks**

** Note: The Component Video Out jacks can't convert composite video or S-video to component video.*



Connecting your Home Theater Music Jukebox

1. Connect the Music Jukebox to the TV

Connect the VIDEO OUT jack from the Music Jukebox to the video input on the back of your TV. If your TV has line-level audio out jacks (red and white connectors) and you want to listen to your TV programming in full surround sound, connect them to the desired audio input jacks on the back of your Music Jukebox.

Note: If your TV has an S-Video input or component video input, we recommend you make the video connection by using these jacks instead.

2. Connect the telephone line or Ethernet cable to the Music Jukebox.

Connect the telephone line cord or Ethernet cable from the wall jack to the MODEM or ETHERNET jack on your Music Jukebox. For Ethernet connections, make sure you use the supplied Ethernet cable with attached ferrite core filter. Using other Ethernet cables may cause interference.

Very Important: You must connect a telephone line or Ethernet cable to use many of the features of this unit. If the Music Jukebox can't connect to the OpenGlobe server, you won't be able to access artist information, CD cover art, buy CDs from OpenGlobe services, radio information, etc.

If you're not connected through Ethernet, make sure you select the modem in the setup menus (see page 12).

3. Connect your Cable Box or Satellite Receiver to the Music Jukebox.

If you have a cable box or satellite receiver, you may want to connect it to your Music Jukebox. Connect the audio output jacks from your cable box or receiver to the AUDIO SAT IN jacks on the Music Jukebox. Then connect the video out on the cable box or receiver to the VIDEO SAT IN jack on the Music Jukebox.

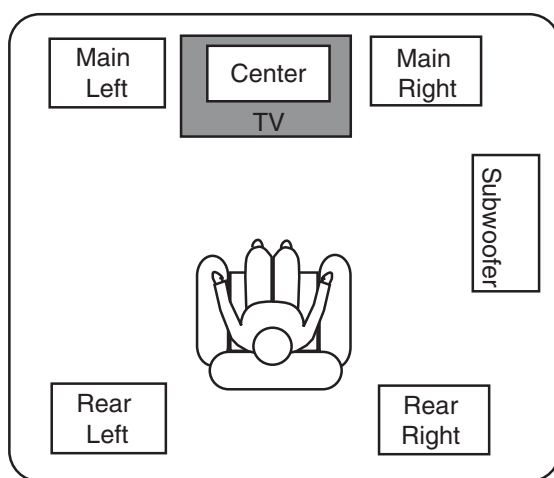
Note: If your cable box or satellite receiver has an S-Video output, we recommend you make the video connection by using this jack instead.

4. Plug the power cord into the power jack on the back of the Music Jukebox and the other end into an AC outlet.

Positioning your Speakers

Your system is equipped with Dolby Digital and DTS (Digital Theater System) decoding, which enables the unit to reproduce sound effects as they were intended. However, the speakers must be properly positioned and balanced. In order to enjoy Dolby Digital and DTS-enhanced sound quality, six speakers are recommended: One center speaker, left and right main speakers, rear left and right speakers, and a subwoofer. A subwoofer is recommended to enjoy improved bass effects. Below are a few suggestions for the set up:

1. The two main speakers should be set between six and ten feet apart. Putting them any closer or farther apart may result in reduced separation of the surround sound effects.
2. Try to align the center speaker and two main speakers, or set the center speaker slightly behind the left and right main speakers, otherwise the sound separation may be affected.
3. Aim the rear speakers directly at the two main speakers, matching height to height. If the room is sparsely decorated, slightly tilt the speakers down to increase sound quality. If the room is densely decorated, face the speakers towards the rear wall at the ceiling. For more information on speaker setup, please refer to Connecting the Speakers on the next page.
4. You can increase or decrease the bass effects by moving the subwoofer closer or farther away from a wall or corner of the room. (You may want to experiment with this until you get the sound you want.)



Here is an example of how you could position your speakers. There are many possible options, and you may want to experiment to find the right balance for you.

Chapter 1: Connections and Setup

Connecting the Speakers

For better sound quality, Center speaker, rear speakers and subwoofer are preferred. Adding center and rear speakers will enhance surround effects. Adding a Subwoofer will increase bass response. If you want to enjoy a full frequency range of sound effects, it is recommended to use the subwoofer with the speakers to maintain adequate bass signal for the surround sound effect.

Speaker cords, 1 for each speaker, are needed for connection. Twist the stripped ends of speaker cord about 2/3 inch (15 mm). Press down on the tab to open the terminal and insert the wire. Snap the tab closed. To ease speaker connections, the speaker cords and the terminals are color-coded into: Red/Black (Main Speakers), Blue/Black (Center Speaker) and Grey/ Black (Rear Speakers). Use the black wires for the negative terminal connections. When connecting the speakers, make sure the colors of speaker wires and terminals are matched. If the cords are reversed, the sound will be distorted and lack bass.

Connecting the Antennas

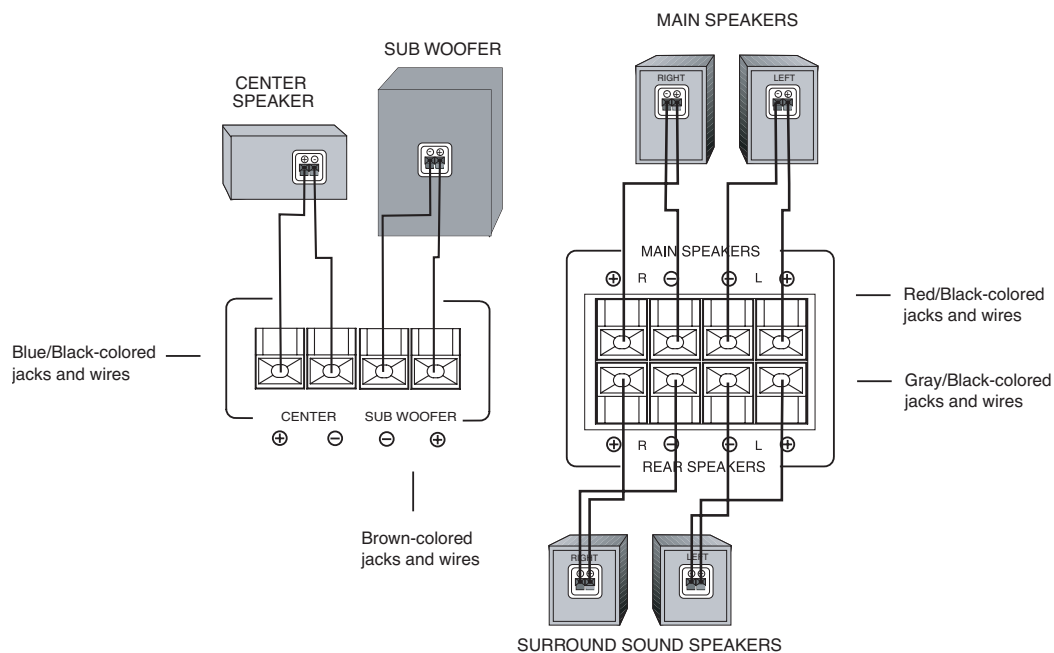
The AM and FM antennas connect to the AM and FM terminals on the system's back panel. They must be hooked up in order to receive clear reception.

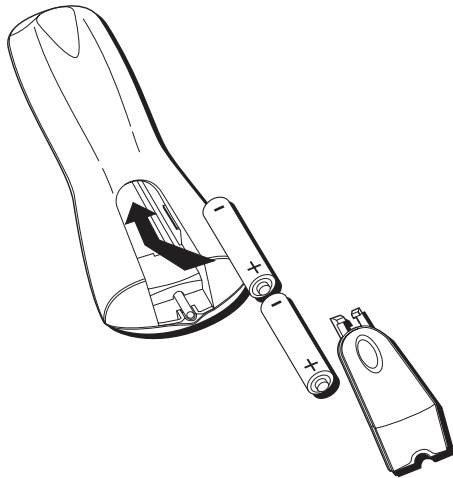
Uncoil the antenna wires and locate the bare ends. Press down on the tab to open the terminal and insert the wire. Snap the tab closed. After connecting the antennas, extend them to their full length and adjust their positioning for better reception.

Remember to place your antenna wires away from speakers wires and any cables for best reception.

Connecting the Subwoofer

Connect the subwoofer with the audio cord (brown/ black) provided. If you want to connect your own powered subwoofer, refer to the owner's manual for the subwoofer.





Put Batteries in the Remote Control

Insert the batteries matching the polarities (+ and -) on the batteries with the diagram in the battery compartment.

Important Battery Information

- If you're not going to use the remote for a month or more, be sure to remove the batteries because they can leak and cause damage.
- Dispose of batteries in the proper manner, according to federal, state, and local regulations.
- Any battery may leak electrolyte if mixed with a different battery type, if inserted incorrectly, if all batteries are not replaced at the same time, if disposed of in fire, or if an attempt is made to charge a battery not intended to be recharged.
- Discard leaky batteries immediately. Leaking batteries can cause skin burns or other personal injury

Turn on the TV and Home Theater Music Jukebox

1. Turn on the TV (if the TV you've connected to the Jukebox is an RCA, GE, or Proscan TV, press the TV button on the remote packed with your unit).
2. Turn on the Music Jukebox by pressing the MUSIC, RADIO, or MOVIES button on the remote or press the POWER button on the front of the unit.
Note: The front of the unit displays STARTING when the system is first plugged in and initializing. The POWER indicator comes on when the Music Jukebox is ready for use.
3. Tune the TV to the correct Video Input Channel (see the next page for more information). **You will not see any of the Music Jukebox's menus if you tune your TV to channel 3 or 4.**

Note: If you can set your TV to auto tune to the correct Video Input Channel, you may want to do this. Refer to your TV's owner's manual for more information.



Using the Remote Control to Choose On-screen Menu Items

The technical term is "Navigation" – how you move through the on-screen menus. The theory is the same throughout the menu screens: highlight your choice and select it.

To highlight a menu item, press the arrow buttons on the remote or the front of the unit. Use the up or down arrow button to move up or down. Use the right or left arrow button to move left or right.

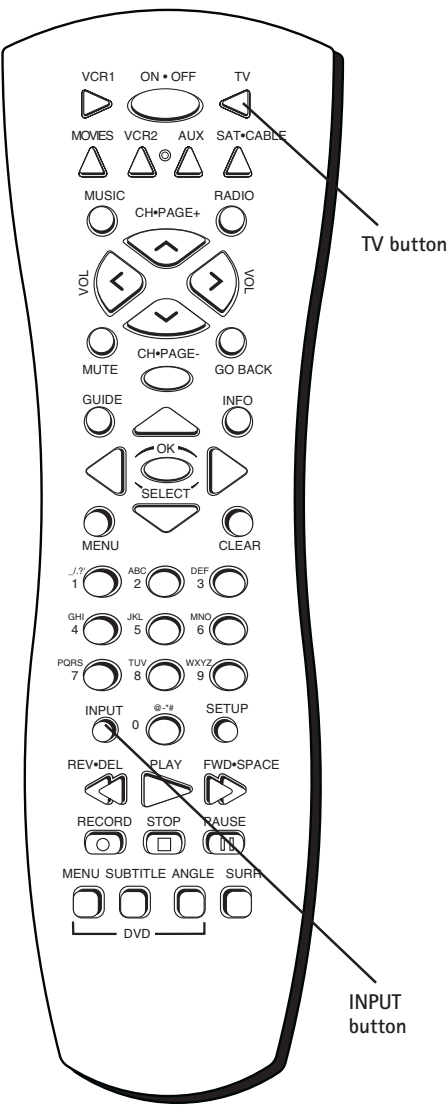
To select the item that you've highlighted, press OK•SELECT.

Note: Highlighted means that the menu item stands out from the other menu items on the list (usually represented by a colored box or circle around the choice).

Chapter 1: Connections and Setup

How to Find Your TV's Video Input Channel

You must tune your TV to the Video Input Channel since you are using the Music Jukebox's audio/video output jacks (composite video, S-video, or component video [Y, Pb, Pr]). You will not see any of the Music Jukebox's menus if you tune your TV to channel 3 or 4.



If you programmed your remote control to operate your TV (instructions on page 54), press the INPUT button to find the Video Input Channel.

The Video Input Channel for TVs varies by brand and model. Below are some steps to try to find your TV's video input channel:

- If your TV brand is RCA, GE, or Proscan, press the TV button on the Music Jukebox's remote control, then press the INPUT button.
- If you have another brand of TV, see page 54 to see if the Music Jukebox's remote can be programmed to control your TV. If so, once completed, follow the step above.

If those options do not work, try the following ideas. You might access the Video Input Channel by:

- Pressing a button on the TV's remote control (see the table below).
- Selecting a specific channel from the TV's on-screen menu system (see the table below).
- Tuning directly to the Video Input Channel by selecting a specific channel number (see the table below)
- Going through all available channels by pressing the channel up or down buttons on the TV or its remote control.

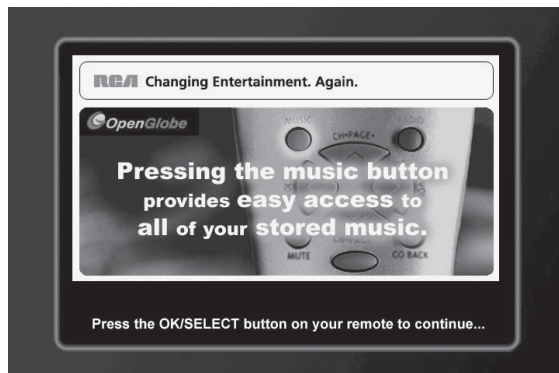
Video Input Channel Variations		
Button/Switch on the TV	Button on the TV Remote	Channel Number
VIDEO	VID 1	00
SIGNAL	LINE	90
VID 1	VID	91
VID 2	VIDEO	92
S-VID	S-VID	93
S-VIDEO	INPUT	VID 1
	S-VIDEO	VID 2
	SOURCE	
	AUX	

Introduction to Your Home Theater Music Jukebox

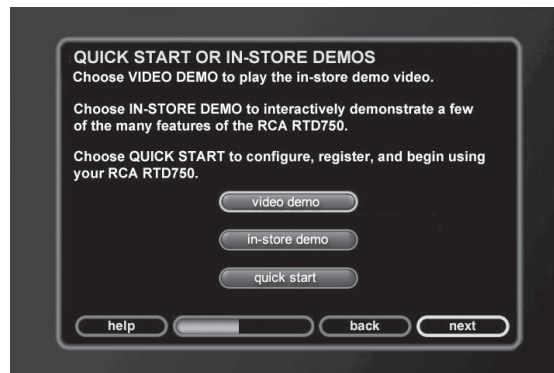
The first screen you will see when you turn on your Music Jukebox is the Introduction screen. The following screens help to familiarize you with the features and the Internet requirements to get the most from your Music Jukebox experience.

Demo Modes

Following the Introduction screen, you'll be able to choose a video demo of the unit, an in-store demo, or go right to the Quick Start to get started using your Music Jukebox right away.



The Home Theater Music Jukebox's Introduction screen.



The Demo or Quick Start options screen.

What Is The Setup Process?

To optimize your Home Theater Music Jukebox so that you can enjoy all of its capabilities, you will need to go through a setup procedure.

You will encounter two types of setup procedures. The first type of setup is Quick Start, and occurs automatically the first time you turn on the unit. The second type of setup is one you can initiate at any time by pressing the SETUP button on your remote. This particular setup allows you to customize user preferences, audio and video settings, communication port settings, security and parental controls, and more.

Running Quick Start

Introduction Screens

The Quick Start process begins with a welcome screen and a description of how to navigate through the menus. Remember to press the OK/SELECT button on the remote to advance to the next screen. The next button is already highlighted by default.

If you have a dialup Internet Service Provider (ISP), gather the following information:

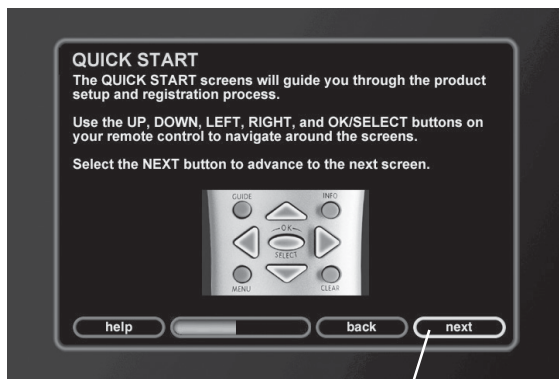
- Dialing Number
- Login Name
- Login Password
- Name of ISP

The Music Jukebox has a simple interface menu so that you can select and configure your connection on an existing account. Most other ISPs are supported if they use standard PPP type connections. If you do not know if your ISP supports this standard (Point to Point Protocol), simply call the provider and ask. If you don't have an Internet Service Provider (ISP), please sign up for one before proceeding on to the next step.

To set up an account with AOL so that you can explore all the exciting features your RCA Home Theater Music Jukebox has to offer, call 1-888-397-3966.

Note:

Free ISPs don't use standard, consistent methods of Internet connectivity and don't open their networks to outside users. Therefore, these can't be used with the Music Jukebox unless you have a Broadband connection.



Next button

The first Quick Start screen, with the button bar at the bottom.

Completing Quick Start

Quick Start is a setup procedure that occurs automatically the first time you turn on the unit. You must be connected to the Internet to complete Quick Start. It is a required procedure which presents a series of screens and menus that enable the Music Jukebox to perform the following:

- get additional information (CD cover art, music information)
- configure Internet Radio stations for your location

Each screen has a button bar at the bottom for accessing the previous or next page.

The arrow buttons on the remote or front of the unit are used to highlight the items, while the OK/SELECT button is used to accept them. The default button on the Quick Start screens is the next button, which allows you to go directly to the next screen if the desired setting is already selected.

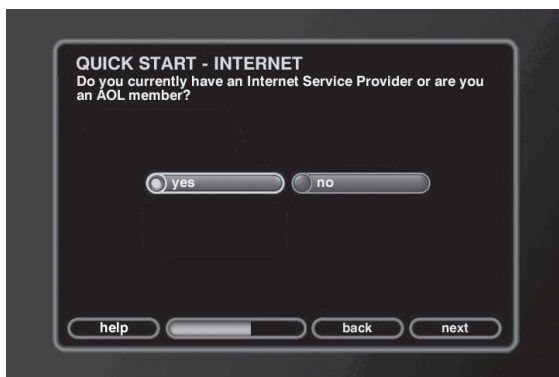
The next steps guide you through the Quick Start process.

Entering Text with the Number Buttons or Optional Keyboards

Before you begin the Quick Start process, you may find areas of the setup where you need to enter more than just numbers. You'll notice the number buttons on the remote control also have letters next to them, and they work similarly to a cell phone or cordless phone for entering letters.

For a list of compatible USB keyboards, see page 58.

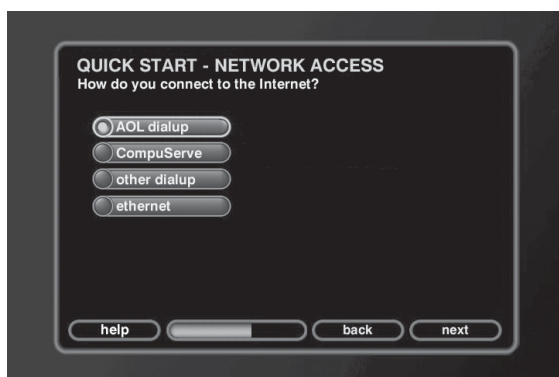
- Press the desired number button repeatedly and scroll through the letters assigned to that button until you see the desired letter.
- To delete a character, press REV•DEL.
- To move the cursor, use the arrow buttons.
- To add a space, press FWD•SPACE.



Internet Access through an ISP

This screen asks if you currently have an Internet Service Provider (ISP) or if you are an AOL member. If you do, yes is selected and *next* is highlighted, so just press OK/SELECT. If you don't have an ISP, highlight *no*, and press OK/SELECT. The next screen has information about how to obtain an ISP.

To set up an account with AOL so that you can explore all the exciting features your RCA Home Theater Music Jukebox has to offer, call 1-888-397-3966.



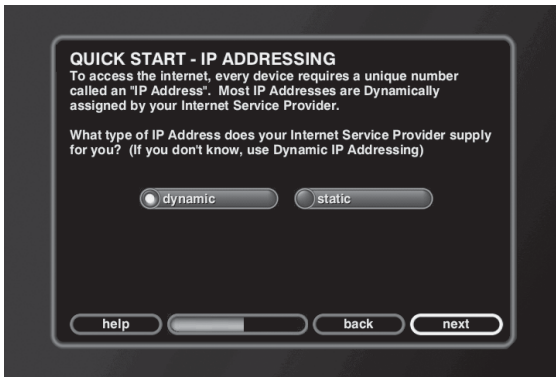
Connection Method

Which type of Internet connection do you have? Highlight *AOL dial-up*, *CompuServe*, *other dialup* or *ethernet* and press OK/SELECT.

Highlight *next* and press OK/SELECT to continue to the next screen.

If you have a dialup connection, go to page 15.

Important: If you're not connected through Ethernet, make sure you select one of the dialup connection methods.

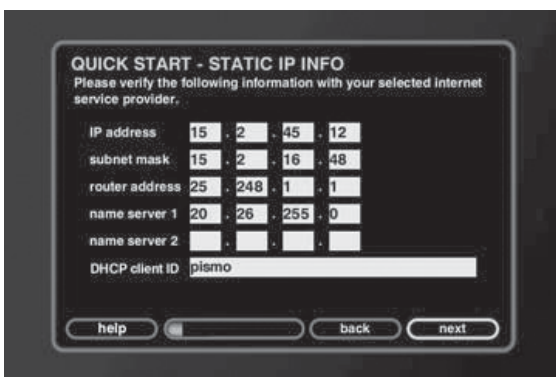


Ethernet IP Addressing

If you are using an Ethernet connection, choose what kind of Internet Protocol Address your ISP supplies, and press OK/SELECT. If you don't know, choose *dynamic*.

Highlight *next* and press OK/SELECT to continue to the next screen.

Tip: If you're not familiar with IP addressing, we recommend you choose *dynamic* for this setting. All your IP addressing information will be gathered from your ISP automatically.

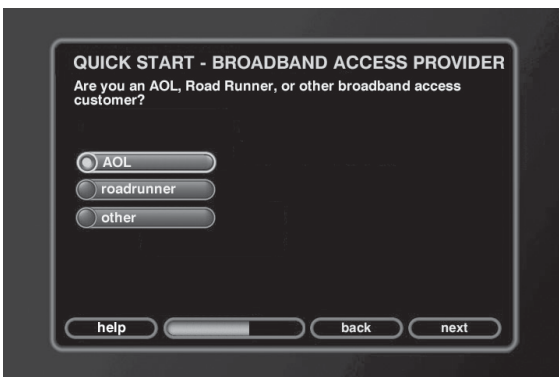


Ethernet Settings

If you chose static in the previous screen, enter all of the IP information provided by your ISP. When finished, highlight *save* and press OK/SELECT.

To enter text, press the desired number button repeatedly and scroll through the letters assigned to that button until you see the desired letter. To delete a character, press REV•DEL. To move the cursor, use the arrow buttons.

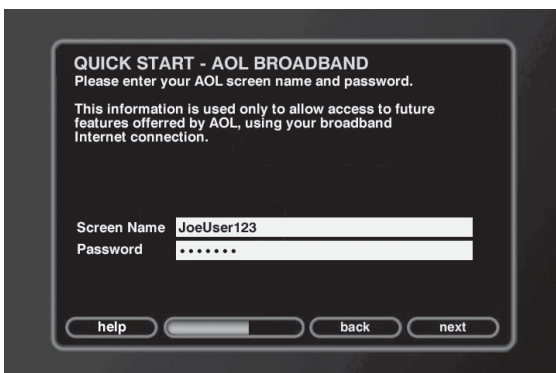
When finished, highlight *next* and press OK/SELECT to continue to the next screen.



Broadband Access Provider

Once you set up your ethernet settings, you'll be asked which broadband access provider you use (AOL, Roadrunner, or other). Choose the correct one, highlight *next*, and press OK/SELECT.

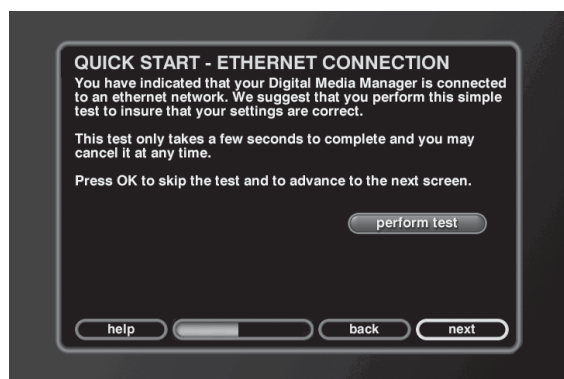
Highlight *next* and press OK/SELECT to continue to the next screen.



Broadband Login Info

Enter your screen name (for AOL) or email address for Roadrunner and others, as well as your password.

When finished, highlight *next* and press OK/SELECT to continue to the next screen.



Testing the Ethernet Connection

After you enter your Ethernet settings and access information, a connection test screen appears. Highlight *test connection* and press OK/SELECT. The test results are displayed. If you experience any problems, see below for more information.

Highlight *return*, and press OK/SELECT to continue.

Note: You may need to run this test more than once to verify your connection.

Explanation of Connection Test

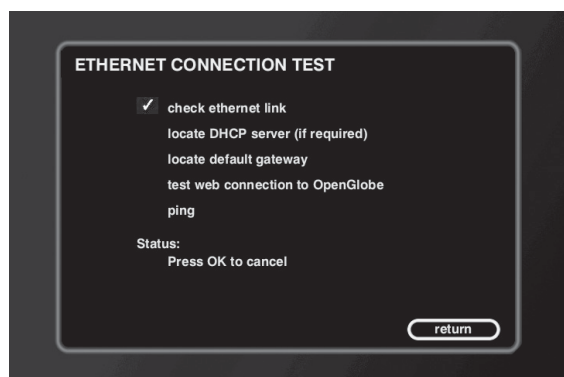
Check ethernet link — Verifies that there is a physical connection to an Ethernet network. This test will fail if there is no Ethernet cable connected into the Music Jukebox or if the other end is not connected to the network (hub, gateway, cable modem, etc.).

Locate DHCP server — Checks for a DHCP server if the IP address settings are set to *dynamic*. This test will fail if no DHCP server is found.

Locate default gateway — Checks for the existence of the gateway whose IP address was returned from the DHCP server. The test will fail if the gateway does not respond.

Test web connection to OpenGlobe — Checks connection to the OpenGlobe server.

Ping Time — Total time it took for the OpenGlobe server to respond to the above test.



Zip Code

Important: You must enter a valid zip code for your location.

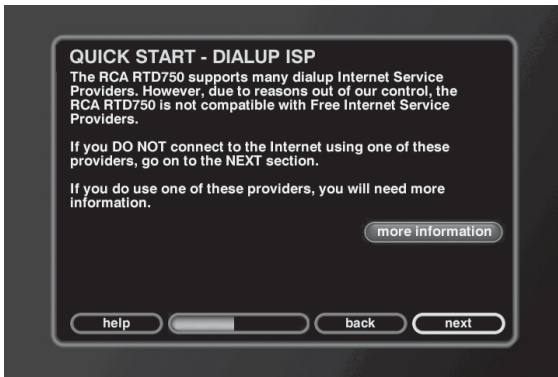
The Music Jukebox updates the time and gathers all your AM/FM and Internet radio stations from your zip code. Choose the country where you live and enter your zip code.

Remember, many of the above features won't be available if you don't provide your zip code or postal code.

Highlight *next*, and press OK/SELECT to continue.

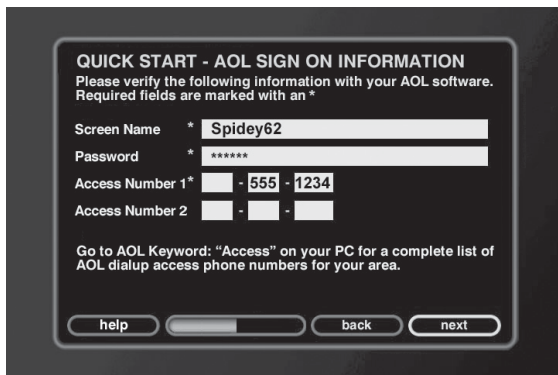
This completes the Quick Start process, and you can now start enjoying your Home Theater Music Jukebox!

Note: All advanced setup options are explained in Chapter 5.

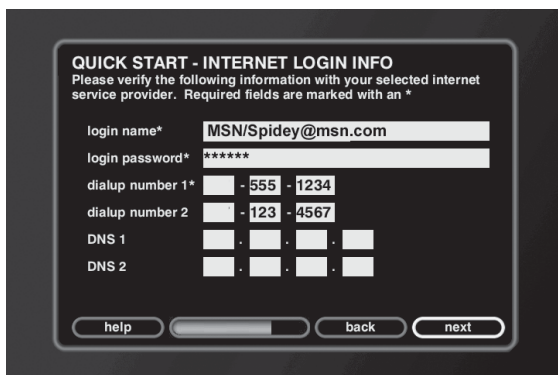


Dial-up ISP

If you chose *other dial-up* for your network connection access in the previous screen, you will be asked if you use free ISPs to connect to the Internet. The Home Theater Music Jukebox can't use these ISPs. Highlight *more info*, and press OK/SELECT for more on how to obtain an ISP.



The AOL sign on screen.



The standard dialup screen.

Internet Login Info

If you are using a dial-up connection, enter the login name or username, password, and dial-up number for your ISP account.

To enter text, press the desired number repeatedly and scroll through the letters assigned to that button until you see the desired letter. To delete a character, press REV•DEL. To add a space, press FWD•SPACE. To move the cursor, use the arrow buttons.

The password will appear as visible text when the field is empty AND you are entering the password. Once you move from the password field or whenever you return to this screen, the password text is hidden.

Some popular ISP access formats:

AOL Simply enter your username, password, and access number. (You don't need to enter AOL/username, etc.)

Earthlink There are two methods:

- a) Login name – ELN/username
- OR

- b) Login name – username@earthlink.net

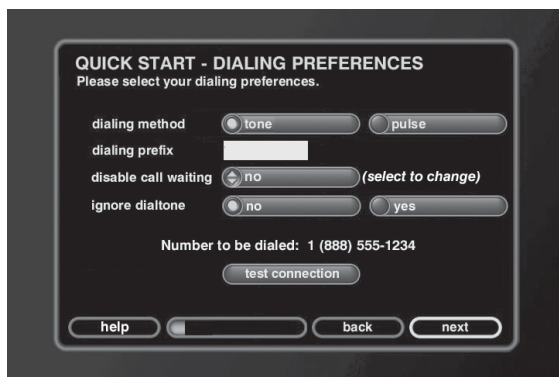
Then enter your password and access number information.

MSN Login name – MSN/username

Then enter your password and access number information.

When finished, highlight *next* and press OK/SELECT to continue to the next screen.

Chapter 1: Connections and Setup



Dialing Preferences

This screen allows you to select your dialing preferences, including dialing method, dialing prefix, and call waiting disable, and ignore dial tone.

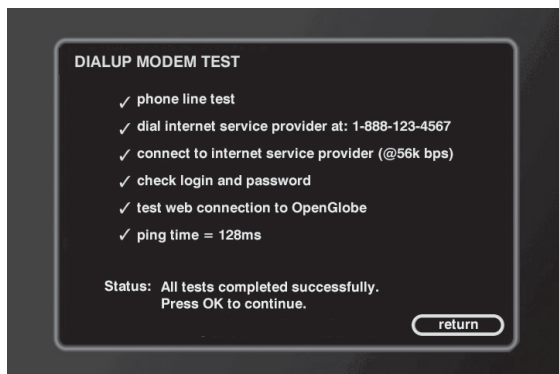
Dialing method – Tone or pulse. Check with your phone company if you are not sure which one you have.

Dialing prefix – If you normally need to dial a prefix (1, 9, etc.) to make a call, enter it here. You may also need to enter a 1 for 800 numbers.

Disable call waiting – If you have call waiting on your phone line, you may want to disable it during your dialup session to prevent interruptions to your connection. Several options are available, depending on which key combination your phone company uses (*70, 70#, and 1170). It is automatically re-enabled after you disconnect from the OpenGlobe server.

Ignore dial tone – If you have voice mail on your phone line, you are probably familiar with the “stuttered” dial tone you hear when you have messages. Before the Music Jukebox dials your ISP, it checks the line for a regular dial tone. If you have messages, the Music Jukebox will disconnect and allow you to listen to your messages, or you can set it to ignore the dial tone and dial automatically.

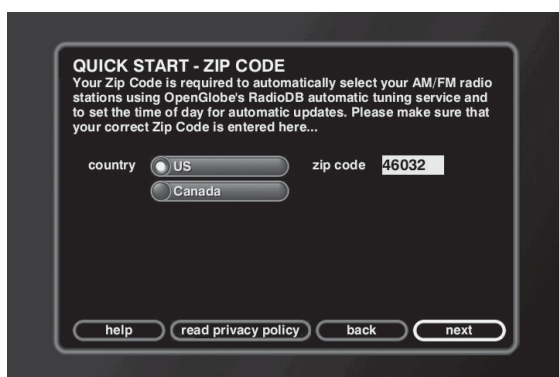
Highlight *next* and press OK/SELECT to continue to the next screen.



Testing the Dialup Connection

In the Dialing Preferences screen, highlight *test connection* and press OK/SELECT. The test results are displayed.

Highlight *return*, and press OK/SELECT to continue.



Zip Code

Important: You must enter a valid zip code for your location.

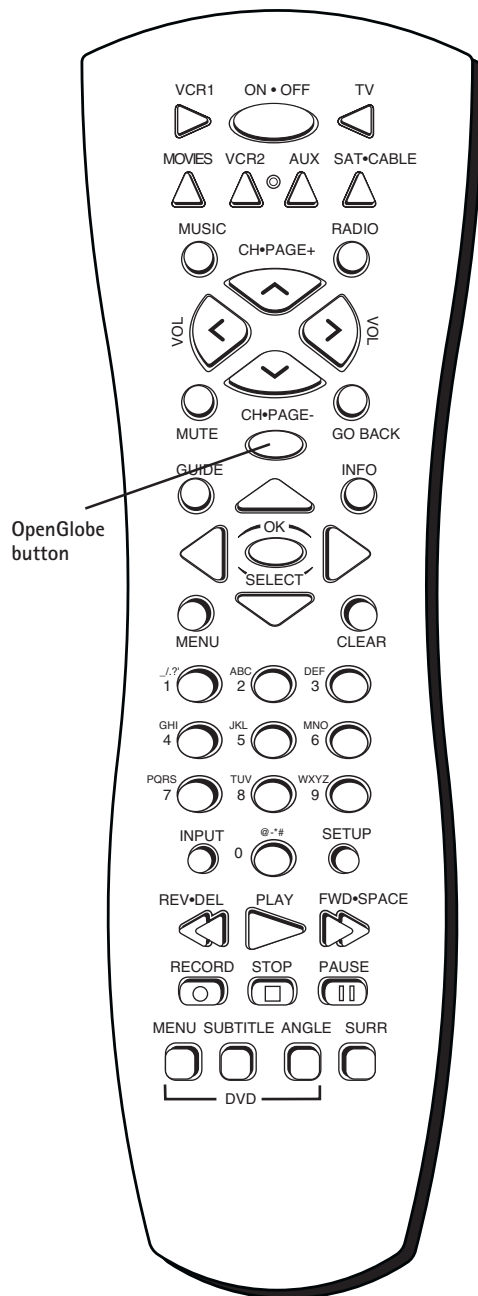
The Music Jukebox updates the time and gathers all your AM/FM and Internet radio stations from your zip code. Choose the country where you live and enter your zip code.

Remember, many of the above features won't be available if you don't provide your zip code or postal code.

Highlight *next*, and press OK/SELECT to continue.

This completes the Quick Start process, and you can now start enjoying your Home Theater Music Jukebox!

Note: All advanced setup options are explained in Chapter 5.



Note: This remote operates most RCA, GE, and Proscan products.

The Buttons on the Remote Control

Frequently Used Buttons

The following are buttons on the remote control that you will use frequently, including choosing what Guide you want the Home Theater Music Jukebox to display and navigating the various menus.

(0-9) Number buttons Enters numbers when selecting track numbers, etc. Also used to enter text when naming groups and playlists.

In VCR, TV, or satellite mode, selects channels up to 99 by pressing two number buttons. Selects 3-digit channels by pressing and holding 1 until 1 -- appears on screen. Then press the other two numbers.

Arrows Move the on-screen menu highlight.

GO BACK Selects/deselects all tracks of a CD or MP3 title or playlist, and toggles the play modes. Also returns you to the previous menu for a compatible TV, VCR, or satellite receiver.

GUIDE Toggles between the Guide and Player screens in Music, Movie, or Radio modes. Also displays the channel guide on some RCA, GE, and Proscan TVs and satellite receivers.

MENU Displays the Music, Movies, or Radio Options menus.

MOVIES Puts the unit in DVD mode and displays the Movie Guide.

MUSIC Puts the unit in Music mode and displays the Music Guide.

OK • SELECT When a menu is on the screen, selects the highlighted item. Also selects individual tracks of a CD or MP3 title or playlist.

OpenGlobe Takes you to a specialized information area to explore your favorite artists and actors. You can also find similar artists or movies, and purchase new CDs and DVDs.

RADIO Puts the unit in Radio mode and displays the Radio Guide.

RECORD Used to record CDs in mp3 format to the hard drive. When making selections in the menus or guides, confirms and saves your changes. Also starts record mode on a compatible VCR.

STOP Cancels the current selection in the menus or guides without making any changes. Also stops the current function (record, playback, rewind, etc).

Chapter 1: Connections and Setup

Other Buttons on the Remote Control

These buttons are used for the DVD features of the unit, and for controlling other compatible components, including VCRs, TVs, and satellite receivers.

ANGLE Accesses various camera angles that might have been added to the disc when it was created.

Note: Currently, very few movies provide multiple camera angles.

AUX Puts the remote in AUX mode. Can also be programmed to operate some compatible products (TV, audio component, or satellite receiver/cable box).

CH + and - Selects next higher or lower channel in the channel list. Also selects the next/previous chapter or track when you're playing a disc, and used to scroll a page at a time in the Music, Movies, and Radio Guides.

CLEAR Removes any menu or display from the screen and returns you to normal viewing. Also clears on-screen menu item entries.

FORWARD Searches forward if pressed during playback. During play-pause mode in DVD mode, starts slow-motion advance and each press of the button during slow-motion advance increases the speed incrementally.

INFO Shows additional information for what is playing. Also, shows the status displays on screen of the VCR, TV, DVD player, etc. (whichever compatible component is set as the remote control's active device).

INPUT Toggles the Video Input Channels. Video Input Channel refers to the signal coming from the component connected to audio/video input jacks on the Music Jukebox. In satellite/ cable mode, changes audio input from analog to digital.

MUTE Reduces the volume to a minimum level on some compatible products.

ON•OFF Turns the unit on or off. Also turns other compatible components on or off.

PAUSE Pauses playback or recording modes. Press PAUSE again to return to active playback or recording.

PLAY Plays a DVD disc.

REV•DEL Searches backward if pressed during playback. In DVD mode, searches backward on a DVD. Jumps back about 1/2 second each time it is pressed when a movie is paused.

SAT•CABLE Turns on a compatible RCA, GE, or Proscan satellite receiver, puts the remote in satellite receiver or cable box mode, and can also be programmed to operate some compatible receivers or cable boxes.

SUBTITLE In DVD mode, accesses the Subtitle part of the on-screen Info Display, and turns Subtitles on and off (if subtitles are available on the disc you are playing).

SURR (Surround) Allows you to change the surround sound settings.

TV Turns on a compatible RCA, GE, or Proscan TV and puts the remote in TV mode. Also used with the ON•OFF button to turn on/off a compatible TV.

VCR1/VCR2 buttons Turn on the unit and put the remote control in VCR mode. Likewise, you can change to DVD mode by pressing the MOVIES button.

VOL < and > Raises and lowers the volume of some compatible products.

Using the INPUT Button

Use the INPUT button to scroll through the available Video Input Channels. The Video Input Channels allow you to view images from a device connected to the unit (like a camcorder).

1. Make sure that the unit is turned ON.
2. Press the remote control's INPUT button to tune to the Video Input Channel.

Playing Music

The Home Theater Music Jukebox puts your entire music collection at your fingertips. In this section you'll learn how to navigate the Music Player screen and sort, select, and listen to your favorite music. It's as simple as cuing up something from your library, or putting in a CD to add something new to your collection. You'll learn more about how to record new music to your library in the next section, but for now let's look at how the player works.

Some Terms and Definitions You'll See in the Following Chapters

There may be a few terms used in the next few chapters you may not be familiar with. Take a minute to familiarize yourself with them.

Playlist — Your customized collection of songs that you can set in any order or include any song.

Track — An individual song.

Group — Think of this as a collection of musical genres (Country, Rock, Classical, etc.).

Title — Think of this as a complete CD album (including every track on the CD, for example).

MP3 track — A track you have recorded or "ripped" from a CD and is stored on the Music Jukebox's hard drive.



Navigating the Music Player Screen

- The Music Player screen appears whenever you insert a CD or select a track from the Music Guide.
- Arrow buttons - Use the up and down arrow buttons to move the highlight from one track to another. The right and left buttons are not used on the Music Player screen.
- OK/SELECT - When a track is highlighted, stops playing the selected track and starts playing the highlighted track. You can also play the track by pressing the PLAY button.
- PAGE +, PAGE- - Scroll the music player track list one page at a time. Each page contains 12 different tracks. On a page that contains less than 12 tracks, the bottom rows will be empty.
- Number buttons - Enter a track number using the number buttons, then press the SELECT button.
- INFO - Displays detailed track information (transport status, play mode, elapsed track time).
- RECORD - Starts recording an MP3. See the next chapter for details.
- PLAY, PAUSE, and STOP - Plays, pauses, or stops music. An on-screen status appears each time the button is pressed.
- FAST FORWARD and REWIND - Fast forward and rewind a track. Both stop when the beginning or end of a track is reached. An on-screen status appears each time the button is pressed.

There are a number of ways to play music:

- Open the disc tray and insert an audio CD. The Music Jukebox plays the CD, connects to the internet to identify the disc, loads the information into the music library, displays the track list, title artist, and cover art in the Music Player View.
- Use the GUIDE button on the remote. The Music Jukebox displays the Music Guide View so that you can navigate and select an item.

Selecting and Listening to a Music Title

1. Press the MUSIC button on your remote.
2. Press GUIDE. The Music Guide screen appears.
3. Use the left and right arrow buttons to highlight the group of your choice.
4. Use the up and down arrow buttons to highlight the desired music title.
5. Press SELECT to display a list of the tracks on the highlighted CD or PLAY to play the highlighted CD (the title tracks and cover art appear in the Player screen and the music plays.)

Sorting Music by Artist, Title, Song, Alphabetically

1. Press the MUSIC button on your remote.
2. Press GUIDE. The Music Guide screen appears.
3. To sort by artist, title, or song, highlight and select the View Mode button on the screen and then highlight and select the desired view.
4. To sort alphabetically, press the number buttons on the remote for the desired letter.

Recording Music

Music Compression and MP3 Audio Quality

When you create an MP3 file from a CD song, you compress the information so that it takes up less space on the hard drive. The compression technology can use varying sample rates of the song, or bit rates, in which it chooses which bits of musical information to keep and which to ignore. At high bit rates, you can match the quality of the song very closely, which should be the goal for the best representation of the music.

The Music Jukebox's default bit rate is 128kbps, which is near CD quality. Again, the higher the bit rate, the better the performance, so you'll want to rip the song as close to 128kbps as possible. You can choose bit rates anywhere from 96kbps-320kbps. Keep in mind, however, that the higher the bit rate, the larger the MP3 file becomes and the more space it will use on the hard drive.

The default record bitrate can be changed by pressing the SETUP button and using the *Preferences* menu settings.



Recording Music from a CD

Recording a CD to the Jukebox takes just 3 simple steps.

1. Press the Open/Close button on the front of the unit and insert a CD into the CD disc tray. Press the button again to close the tray.

The Music Jukebox then connects to the OpenGlobe server for all available information (including cover art and track listing).

2. Press RECORD (the Music Record screen appears).

All tracks appear with a check mark to the right to indicate they will be recorded.

- To remove or add all of the tracks, highlight the title of the CD and press GO BACK (all tracks will be checked or unchecked).
- To remove or add a single track, use the up and down arrow buttons to highlight a track, then press OK/SELECT to remove or add it (the track will be checked or unchecked).
- To exit the Music Record screen, press STOP.

3. When finished selecting or deselecting tracks, press RECORD (all of the selected tracks are recorded to the hard drive).

Note: You can also press RECORD while playing the CD.

The Music Record Progress screen appears and indicates how long the record process will take, with a progress bar at the bottom of the screen and remaining time. Please be patient. This may take several minutes.

After a few minutes, a screen saver appears. To return to the Music Record Progress screen press any arrow button.

Important: Do not attempt any other functions during the record process.

Note: If a warning appears stating that there isn't enough space on the hard drive, you will need to remove some of the songs, or make room on the hard drive.

- To cancel recording at any time, press STOP. All tracks that have been completely "ripped" will be saved. Tracks that have been partially recorded or have not yet started will be deleted.

When recording is complete (or cancelled), the Music Guide screen will be displayed, with the newly recorded title highlighted.

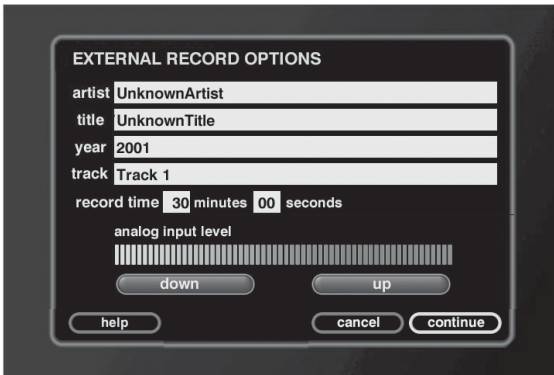
4. Go ahead and record a couple more tracks or titles of different musical styles. This will be useful for understanding how to manage your music and find it easily later.

Note: Keep in mind that you may see two icons in the Music Guide screen for the same song/title if a CD you just recorded is in the disc tray, one for the CD and one for the MP3 stored on the hard drive. Once you eject the CD, the CD icon will disappear.



Playlist
icon

MP3
icon



Recording Music from an External Audio Device

This feature lets you record external audio sources (radio, tape, LPs) as MP3 files on the hard drive.

1. Connect your external device to the Home Theater Music Jukebox.
2. Press MUSIC (the Music Guide appears).
3. In the Music Guide, navigate to the External Group, highlight the external input you want to record, and press the RECORD button on the remote or front of the unit.
4. To start recording immediately, press RECORD again, or enter the artist and title information, etc. You may also want to set the record time (up to 80 minutes). To session is recorded as a single MP3 track on the hard drive.

When recording is complete (or cancelled), the Music Guide screen will be displayed, with the newly recorded title highlighted.

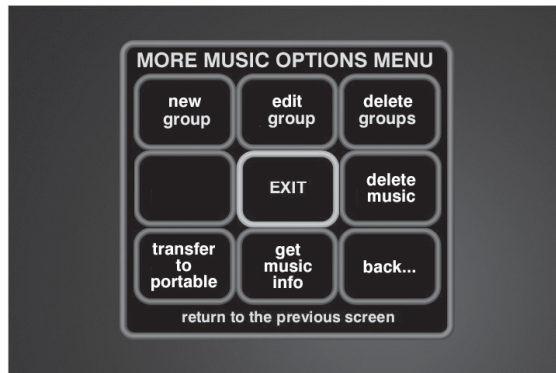
Managing Music

You can easily manage your music through the Home Theater Music Jukebox's Music Options feature. This set of screens allows you to create and manage playlists (lists of songs), look up and edit music information, and transfer or record music to portable players.

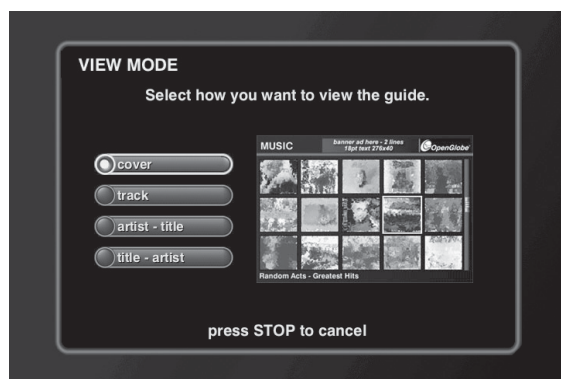
There are two screens of Music Options. The first screen appears when you press the MENU button while in Music mode. The second screen appears when you select *more* in the MUSIC OPTIONS MENU.



The MUSIC OPTIONS menu.



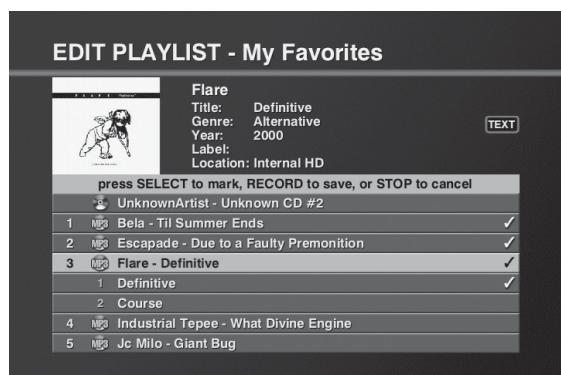
The MORE MUSIC OPTIONS menu.



The VIEW MODE menu.



The Cover Art view mode.



The EDIT PLAYLIST screen.

Changing the View Mode

You can change how your music library appears in the Music Guide. The choices include cover, track, artist, and title.

1. Press the MUSIC button on your remote.
2. Press MENU (the MUSIC OPTIONS MENU appears).
3. Highlight and select *view mode* (the VIEW MODE menu appears).
4. Highlight and select the view mode you want:
 - cover — Sorts the list alphabetically by the cover art.
 - track — Sorts the list alphabetically by track name.
 - artist-title — Sorts the list alphabetically by artist.
 - title-artist — Sorts the list alphabetically by title.

Selecting a view will close the View Mode menu and display the Music Guide using the new view.

- To cancel and exit this screen without changing the view mode, press STOP.

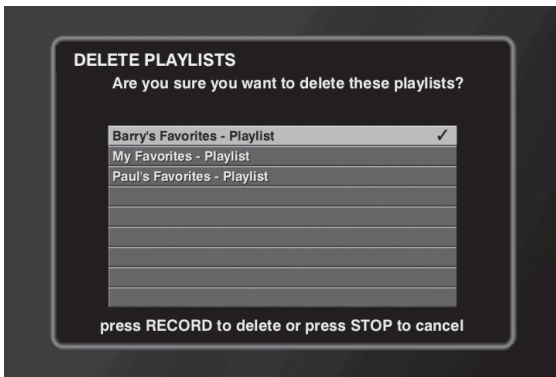
Creating a New Playlist

1. Press the MUSIC button on your remote.
2. Press MENU (the MUSIC OPTIONS MENU appears).
3. Highlight and select *new playlist* (a screen appears so you can enter the name for the new playlist).
4. When you have finished, press OK/SELECT to continue (the Edit Playlist screen appears).
5. Use the arrow buttons to highlight what songs you want to include in the playlist, and press OK/SELECT to checkmark them.
6. When finished, press RECORD to save the playlist.

Note: Up to 200 songs can be added to a single playlist or "favorites" playlist. There is no limitation to the number of playlists.

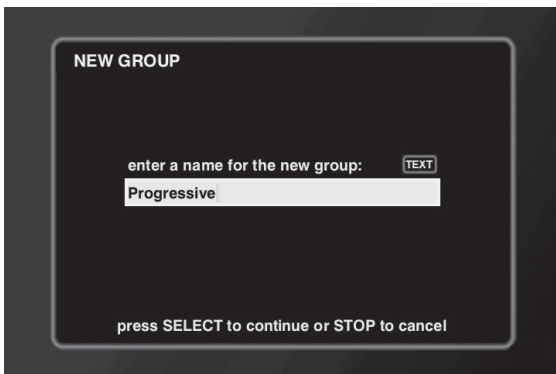
Editing a Playlist

1. Press the MUSIC button on your remote.
2. Press GUIDE (the Music Guide screen appears).
3. Use the arrow buttons to highlight the playlist you want to edit.
4. Press MENU (the MUSIC OPTIONS MENU appears).
5. Highlight and select *edit playlist* (a screen appears so you can change the name for the playlist, if you want. You don't have to change the name of the playlist to edit its contents).
6. Press OK/SELECT to continue (the EDIT PLAYLIST screen appears).
7. Use the arrow buttons to highlight what songs you want to remove from the playlist, and press OK/SELECT to uncheck them.
8. When finished, press RECORD to save the updated playlist.



Deleting a Playlist

1. Press the MUSIC button on your remote.
2. Press MENU (the MUSIC OPTIONS MENU appears).
3. Highlight and select *delete playlist* (the DELETE PLAYLIST screen appears).
4. Use the arrow buttons to highlight the playlist(s) you want to delete and press OK/SELECT to checkmark them.
5. Press RECORD to delete the selected playlists. Don't worry, the tracks won't be deleted from the hard drive.
 - To cancel and exit this screen without deleting any playlists, press STOP.



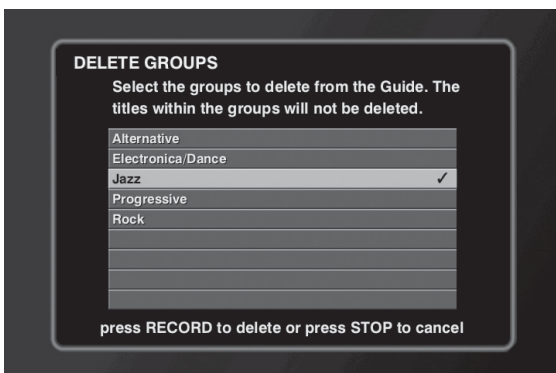
Creating a New Music Group

1. Press the MUSIC button on your remote.
2. Press MENU (the MUSIC OPTIONS MENU appears).
3. Highlight and select more (the MORE MUSIC OPTIONS MENU appears).
4. Highlight and select new group (a screen appears so you can enter the name for the new group).
5. When you have finished, press OK/SELECT to continue (the Edit Music Group screen appears).
6. Use the arrow buttons to highlight what CD titles you want to include in the group, and press OK/SELECT to checkmark them.
7. When finished, press RECORD to save the group.



Editing a Music Group

1. Press the MUSIC button on your remote.
2. Use the left or right arrow buttons to highlight the group you want to edit.
3. Press MENU (the MUSIC OPTIONS MENU appears).
4. Highlight and select more (the MORE MUSIC OPTIONS MENU appears).
5. Highlight and select *edit group* (a screen appears so you can change the name for the group, if you want. You don't have to change the name of the group to edit its contents).
6. Press OK/SELECT to continue (the EDIT MUSIC GROUP screen appears).
7. Use the arrow buttons to highlight what CD titles you want to remove from the group, and press OK/SELECT to uncheck them.
8. When finished, press RECORD to save the updated group.



Deleting a Music Group

1. Press the MUSIC button on your remote.
2. Press MENU (the MUSIC OPTIONS MENU appears).
3. Highlight and select more (the MORE MUSIC OPTIONS MENU appears).
4. Highlight and select *delete group* (the DELETE GROUP screen appears).
5. Use the arrow buttons to highlight the group(s) you want to delete, and press OK/SELECT to checkmark them.
6. Press RECORD to delete the selected groups. Don't worry, the CD titles or tracks won't be deleted from the hard drive.
 - To cancel and exit this screen without deleting any groups, press STOP.



Changing the Play Mode

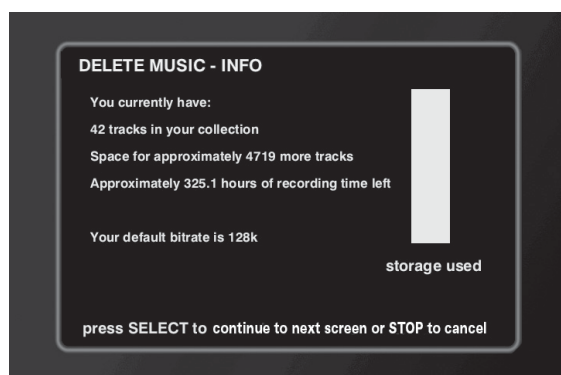
This menu allows you to control the order of how the songs play using the normal, repeat, and shuffle play modes.

1. Press the MUSIC button on your remote.
2. Press MENU (the MUSIC OPTIONS MENU appears).
3. Highlight and select *play mode* (the PLAY MODE menu appears).
4. Highlight and select the play mode you want:
 - normal — Plays the current title and then stops. Tracks are played in sequential order.
 - repeat track — Plays the current track repeatedly until stopped.
 - repeat title — Plays the current title repeatedly until stopped. Tracks are played in sequential order.
 - repeat group — Plays all titles in the current group repeatedly until stopped. Titles and tracks are played in sequential order.
 - shuffle title — Randomly plays all tracks within the current title until stopped. No track will be repeated until all tracks have been played.
 - shuffle group — Randomly plays all tracks and all titles within the current group until stopped. No track will be repeated until all tracks have been played.

Selecting a play mode will close the Play Mode menu and display the Music Guide with the new play mode in effect.

- To cancel and exit this screen without changing the play mode, press STOP.

Note: In the player screen, press the GO BACK button to toggle the play modes.



Deleting Music

This feature allows you to see how much storage space is left on the hard drive and lets you select songs you might want to delete.

1. Press the MUSIC button on your remote.
2. Press MENU (the MUSIC OPTIONS MENU appears).
3. Highlight and select *more* (the MORE MUSIC OPTIONS MENU appears).
4. Highlight and select *delete music* (the DELETE MUSIC-INFO screen appears).
5. Review the summary of the hard drive information, then press OK/SELECT on the remote to continue (the DELETE MUSIC screen appears).
6. Use the arrow buttons to highlight the tracks you want to delete and press OK/SELECT to checkmark them.
7. When finished, press RECORD to delete the tracks from the hard drive.
 - To cancel and exit this screen without deleting any tracks, press STOP.





Editing the Names of Tracks

1. Press the MUSIC button on your remote.
2. Use the arrow buttons to highlight the CD title with the tracks you want to edit.
3. Press MENU (the MUSIC OPTIONS MENU appears).
4. Highlight and select *edit tracks* (the EDIT TRACKS screen appears).
5. Use the arrow buttons to highlight the track you want to edit and press OK/SELECT (a cursor appears on the track name).
6. Enter the new track name.
7. Press RECORD to save the updated track name.

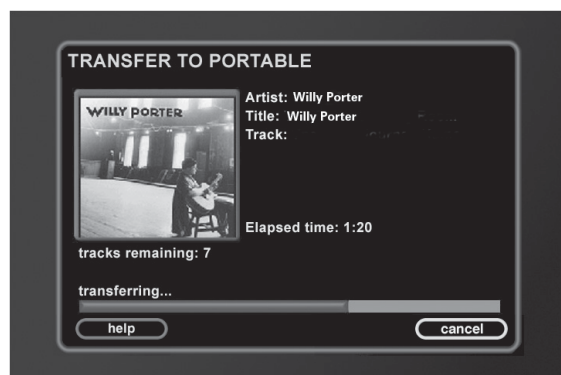
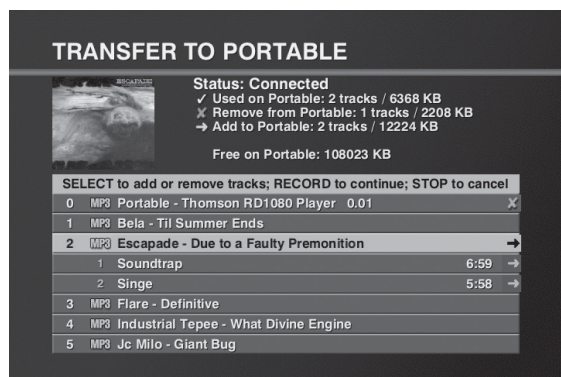


Editing Disc Information

This feature lets you edit the track information such as artist name, title, label name, and year of release. Or, you can have the Home Theater Music Jukebox contact the OpenGlobe server.

1. Press the MUSIC button on your remote.
2. Use the arrow buttons to highlight the CD title you want to edit.
3. Press MENU (the MUSIC OPTIONS MENU appears).
4. Highlight and select *edit disc* (the EDIT DISC INFO screen appears).
5. Use the arrow button to move to the desired field (artist, title, label, year), then enter the information.
6. Move to *genre* and select the genre.
7. For more disc information, select *lookup this disc*, *search for cover*, or *select cover*.

Note: Choosing lookup this disc replaces any information you have already entered for this disc, but it doesn't get saved until you press RECORD.



Transferring Music to a Portable Player

The Home Theater Music Jukebox makes it easy to transfer mp3s and playlists to your favorite USB RCA mp3 player.

1. Make sure the player is connected to the USB jack on the front of the Music Jukebox and turned on (the Transfer to Portable screen appears).

If the Transfer to Portable screen does not appear:

- a. Press the MUSIC button on your remote.
 - b. Press MENU (the MUSIC OPTIONS MENU appears).
 - c. Highlight and select *more* (the MORE MUSIC OPTIONS MENU appears).
 - d. Highlight and select *transfer to portable* (the TRANSFER MUSIC screen appears).
2. Use the arrow buttons to highlight the tracks you want to transfer and press OK/SELECT to checkmark them.
 3. When finished, press RECORD to transfer the tracks to the portable player.

Note: If a warning appears stating that there isn't enough space on your portable player, you will need to remove some of the songs from the transfer list, or make room on the player.

- To cancel and exit this screen without transferring any tracks, press STOP.

RCA Lyra Portable Mp3 Models compatible with the Home Theater Music Jukebox

- RD1020
- RD1021
- RD1070
- RD1071
- RD1080

For more music and information, make sure to check out the services from OpenGlobe (see page 58).



This DVD player is capable of playing the following types of discs: DVDs, audio CDs, DVD-Audio, and MP3 CDs. Before you put a disc in the player, make sure it is compatible.

You can't play the following types of discs: Laserdiscs, CD-I, CD-ROM (computer-only discs), DVD-ROM, WMA discs, or discs recorded using other broadcast standards (i.e. PAL or SECAM).

Note: Some discs may not be compatible due to laser pickup and disc design.



This is an example of a one-sided disc.



This is an example of a two-sided disc – the title is usually in the center of the disc.

Regional Coding

Both the Home Theater Music Jukebox's DVD player and the discs are coded by region. These regional codes must match in order for the disc to play. If the codes don't match, the disc won't play. This player's code is region 1.

Using Different Menus

Each disc is programmed with different features. There are two separate types of menus that you can use to access features:

- The Disc menu – The Disc menu is part of each disc and is separate from the DVD player's menu. The contents of each Disc menu vary according to how the disc was authored and what features are included.
The Disc menu is turned on and off (while the disc is playing) with the DVD MENU button on the bottom of the remote.
- The Music Jukebox's DVD player's Info Display – The Info Display appears as icons across the top of the screen when a disc is playing. It can only be accessed while you are playing a disc. It's turned on and off with the INFO button on the remote.

Remember: A feature will only work if the disc was programmed with that feature. For example, if you choose subtitles on the Info Display, the subtitles will only appear if the disc was created with subtitles. If *Operation Not Permitted* appears at the bottom of the screen, that item (or feature) isn't available.

To Load and Play a DVD Disc

Turn on the TV and your Home Theater Music Jukebox (press MOVIES on the remote or press the Power button on front of the unit).

1. If necessary, tune the TV to its Video Input Channel (if you need more information, go to page 10).
2. Press the OPEN/CLOSE button (the disc tray opens).
3. Place a disc gently into the tray with the disc's label facing up (double-sided discs have content on both sides, so you can place either side up).
4. Press the OPEN/CLOSE button. The disc tray closes. The Music Jukebox reads the disc's table of contents, and then one of two things happens depending on how the disc was programmed:
 - The disc starts playing.
 - The disc menu appears on the screen. One of the options will start disc play. Highlight that option and press OK.

When you stop playing a disc, the player remembers where you stopped. When you start playing the disc again, the Music Jukebox's DVD player picks up where you left off unless the disc is removed or the unit is unplugged, or if you press the STOP button twice.

Chapter 3: Movie Features

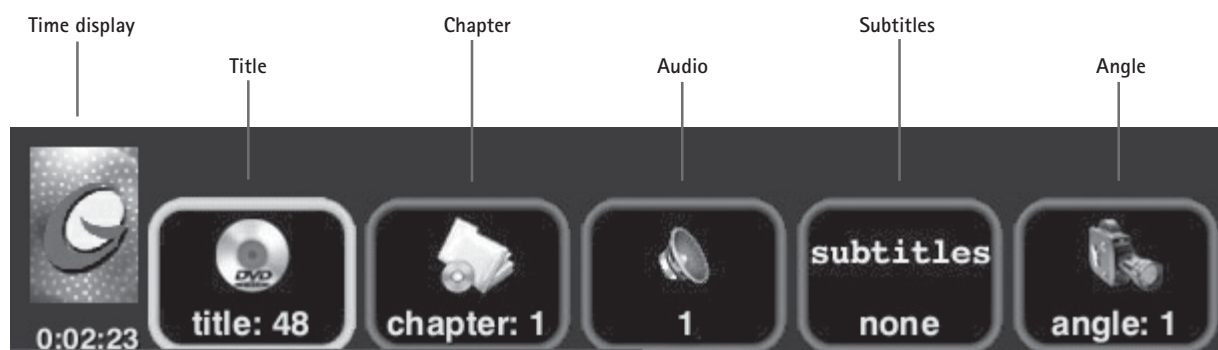
Search Options

To search a disc, you can use the FWD•SPACE button or the REV•DEL button. You can also utilize the following search features:

Picture Scan – When you're playing a disc, each time you press FWD•SPACE or REV•DEL, your Music Jukebox scans the disc faster until you reach the fastest scan speed. To resume normal playback, press PLAY.

Freeze Frame and Frame Advance – While a disc is playing, press PAUSE to freeze the picture. To advance one frame at a time, press PAUSE again (the on-screen icon changes from PAUSE to FRAME). To resume normal playback, press PLAY.

Slow Motion (in Freeze Frame Mode) – While a disc is playing, press PAUSE. Press REV•DEL or FWD•SPACE (each time you press REV•DEL or FWD•SPACE the slow motion will get faster). Press REV•DEL to jump back 1/2 second every time it is pressed. To resume normal playback, press PLAY.



Using the On-Screen Info Display

The on-screen Info Display contains many playback features. To see the Info Display, press the INFO button on the remote while a disc is playing (the Info Display appears across the top of the screen). Each feature is illustrated with an icon. Use the left and right arrow buttons to move through the different icons in the Info Display. When an icon is highlighted, use the up and down arrow buttons on the remote to scroll through the choices displayed in the text box under the icons.

Remember, you can only access the Info Display when you're playing a disc. Also, the Info Display features are only available if the disc was created with that particular feature (i.e., if you select the Angle icon, you won't be able to change the camera angle unless the disc was created with different camera angles).

Operation Not Permitted appears on the screen when you press a button that doesn't have any function. To make the Info Display disappear from the screen, press INFO on the remote control. The Info Display will also automatically disappear after 5 seconds of inactivity.



Shortcut

While you're playing a disc, you can use the CH +/- buttons to go to the next chapter/ previous chapter.



Selecting a Title

Some discs contain more than one title. For example, there might be four movies on one disc (each movie might be considered a title). Each title is divided into chapters. To select a title:

1. While the disc is playing, press INFO on the remote (the Info Display appears).
2. If the Title icon on the Info Display isn't highlighted, press the right and left arrow buttons to highlight it.
3. Use the number button(s) on the remote to enter the title number or press the up and down arrow buttons to go to the next or previous title.

Note: Some discs only have one title.

Selecting a Chapter

Because DVD discs use digital technology, a title can be divided into individual chapters (similar to tracks on a CD). You can skip to a specific chapter by using the Chapter feature in the Info Display.

1. While a disc is playing, press INFO on the remote (the Info Display appears).
2. Press the right arrow button until the chapter icon is highlighted.
3. Press the number button(s) on the remote to enter the chapter you want to play – enter up to 3 digits and then press OK/SELECT. The movie starts playing at the beginning of the chapter you entered.

You can also se the up and down arrow buttons to go to the next or previous chapter.

Note: The Chapter feature won't work if the disc isn't formatted with separate chapters.

Changing the Audio Language

If the disc was created with different language tracks (recorded in different languages), you can change the language while you're playing the disc.

1. While a disc is playing, press INFO (the info display appears).
2. Press the right arrow button until the Audio icon is highlighted.
3. Press the down arrow button on the remote to scroll through the available audio languages.
4. When the language you want to use is highlighted, press the OK button (the dialog plays in the language you selected).

Notes:

The language feature only works if the disc was created with multiple language tracks. If the disc doesn't contain the language you selected, the disc will play in the default language.

When you choose an audio language during disc playback, you only override the audio language setting in the Music Jukebox's Preferences menu temporarily.

The audio language can also be changed through the DVD's disc menu.



Selecting Subtitles

By default, subtitles are off. To turn subtitles on:

1. While a disc is playing, press INFO (the Info Display appears).
2. Press the right arrow button until the Subtitle icon is highlighted.
3. Press SUBTITLE to turn on subtitles (the subtitles appear at the bottom of the screen)
4. To change the subtitle language, press the up or down arrow button repeatedly to see what subtitle languages are available or to turn it off.

Notes:

Changing the subtitle language with the Info Display will only affect the disc you are currently playing. When the disc is removed or the player is turned off, the subtitle language will revert to the language setting specified through the Music Jukebox's Preferences menu.

The subtitle language can also be changed through the DVD's disc menu.

If the disc doesn't contain the language you want to use, the disc's default language is automatically selected.

Some discs are programmed to only allow you to access the subtitle feature through the disc's menu.



Changing the Camera Angle

Some discs contain multiple angles of a particular scene or sequence. If the disc only has one angle, this feature won't work. Currently, very few discs have this feature.

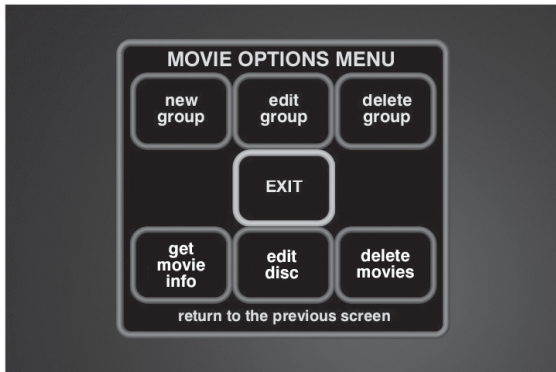
1. While a disc is playing, press ANGLE on the remote. If the disc wasn't created with multiple angles, *Operation Not Permitted* appears at the bottom of the screen.
2. Press the ANGLE button again to go to the second camera angle. Press ANGLE again to go to the third angle, etc.
3. To resume normal playback, scroll through the camera angles until you get to Angle 1.

Playing DVD Discs

Not only can your Home Theater Music Jukebox store and manage thousands of your favorite music titles, but it can also play your favorite DVDs. It connects to the OpenGlobe server for movie information much the same way it does your music information and catalogs the information each time you put in a disc. In this chapter, you'll learn how to use the features of the Music Jukebox to watch and manage your movie collection.



1. Open the disc tray and insert a DVD disc (the Music Jukebox plays the disc, connects to the internet to identify it, loads the information into the movie library, and displays the title, running time, and cover art in the Movie Guide).
2. Press the GUIDE button on your remote (the Movie Guide screen appears).
3. Use the left and right arrow buttons to highlight the group of your choice.
4. Use the up and down arrow buttons to highlight the desired movie title.
5. Press OK/SELECT or PLAY (the movie plays).

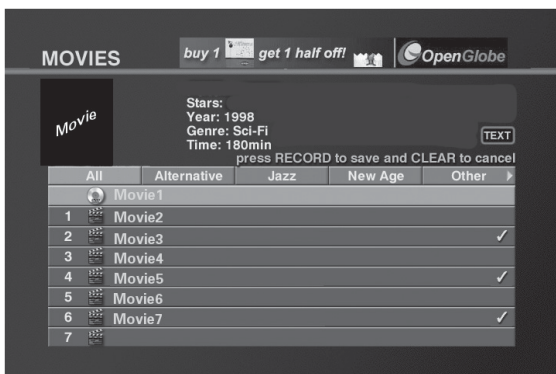


The MOVIE OPTIONS MENU.

Managing Movies

Creating a New Movie Group

1. Press the MOVIES button on your remote.
2. Press MENU (the MOVIE OPTIONS MENU appears).
3. Highlight and select new group (a screen appears so you can enter the name for the new group).
4. When you have finished, press OK/SELECT to continue (the Edit Movie Group screen appears).
5. Use the arrow buttons to highlight what DVD titles you want to include in the group, and press OK/SELECT to checkmark them.
6. When finished, press RECORD to save the group.



The MOVIE GUIDE screen.



Editing a Movie Group

1. Press the MOVIES button on your remote.
2. Use the right and left arrow buttons to highlight the group you want to edit.
3. Press MENU (the MOVIE OPTIONS MENU appears).
4. Highlight and select *edit group* (a screen appears so you can change the name for the group, if you want. You don't have to change the name of the group to edit its contents).
5. Press OK/SELECT to continue (the EDIT MOVIE GROUP screen appears).
6. Use the arrow buttons to highlight what DVD titles you want to remove from the group, and press OK/SELECT to uncheck them.
7. When finished, press RECORD to save the updated group.



Deleting a Movie Group

1. Press the MOVIES button on your remote.
2. Press MENU (the MOVIES OPTIONS MENU appears).
3. Highlight and select *delete group* (the DELETE GROUP screen appears).
4. Use the arrow buttons to highlight the group(s) you want to delete, and press OK/SELECT to checkmark them.
5. Press RECORD to delete the selected groups. Don't worry, the DVD titles won't be deleted from the hard drive.
 - To cancel and exit this screen without deleting any groups, press STOP.



Getting Movie Info

You can try to get movie info again for discs that couldn't be identified during the initial search when you inserted the disc.

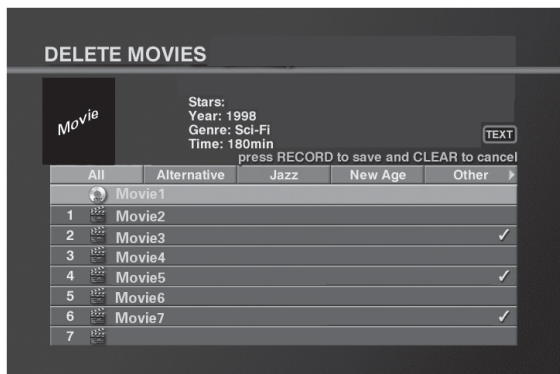
1. Press the MOVIES button on your remote.
2. Press MENU (the MOVIES OPTIONS MENU appears).
3. Highlight and select *get movie info* (the GET MOVIE INFO screen appears and begins searching the OpenGlobe server for the disc info. If the information is available, it will appear).
 - To cancel and exit this screen without getting the info, press STOP.



Editing Movie Disc Info

This feature lets you edit the movie information such as the title, actors, and year of release. Or, you can have the Home Theater Music Jukebox contact the OpenGlobe server.

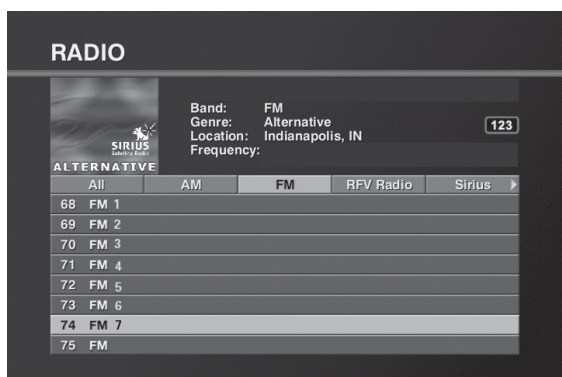
1. Press the MOVIES button on your remote.
2. Use the arrow button to highlight the DVD title you want to edit.
3. Press MENU (the MOVIE OPTIONS MENU appears).
4. Highlight and select *edit disc* (the EDIT DISC INFO screen appears).
5. To connect to the OpenGlobe server for the disc info, highlight and select *lookup this disc* (if the info is available, it will automatically fill in info).
6. To enter the disc information manually, use the arrow button to move to the desired field (title, actors, year), then enter the information.
7. Press RECORD to save any edits.
 - To cancel and exit this screen without updating the info, press STOP.



Deleting Movies

1. Press the MOVIES button on your remote.
2. Press MENU (the MOVIE OPTIONS MENU appears).
3. Highlight and select *delete movies* (the DELETE MOVIES screen appears).
4. Use the arrow buttons to highlight the movies you want to delete and press OK/SELECT to checkmark them.
5. When finished, press RECORD to delete the movies from the Movie Guide.
 - To cancel and exit this screen without deleting any movies, press STOP.

For more movies and information, make sure to check out the services from OpenGlobe (see page 58).

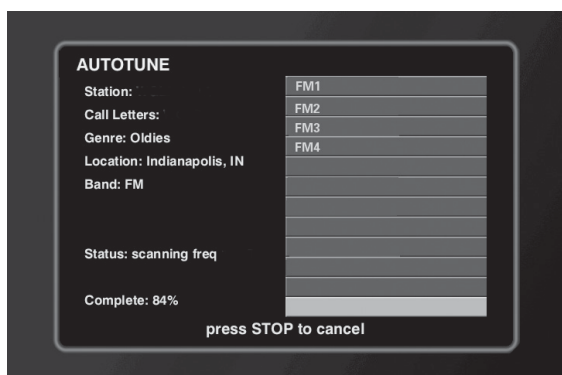


AM/FM Radio

Playing the Radio

1. Press the RADIO button on your remote.
2. Press GUIDE. The Radio Guide screen appears. If you entered the correct zipcode in the quick start process, you'll see a list of radio station near you. If you don't see any station listed, check your antenna connections and your zipcode.
3. Highlight and select the radio station you want to hear or enter the radio station frequency using the number buttons (e.g. 100.5), then press OK/SELECT.

Note: If you have several stations listed, you can sort them by entering the frequency using the remote.



Autotuning AM/FM Stations

Important: Before you begin, make sure the antennas are connected properly (see page 8).

Use this feature to automatically set the available AM/FM radio stations.

1. Press the RADIO button on your remote.
2. Press MENU (the RADIO OPTIONS MENU appears).
3. Highlight and select *auto tune am/fm* (a screen appears to ask what radio band you want to tune).
4. Highlight and select *am or fm* (a confirmation screen appears).
5. To continue, highlight and select *ok* (the unit searches for all the available stations).
 - To cancel and exit this screen without autotuning any stations, press STOP.

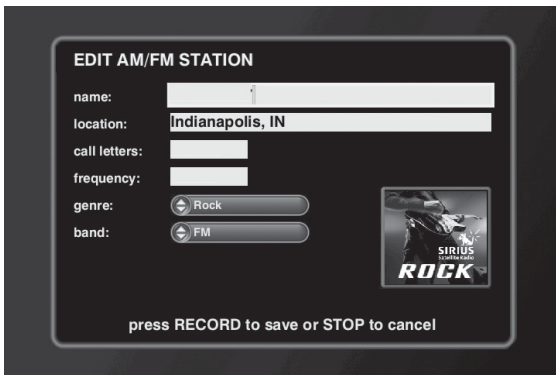


Adding a New AM/FM Station

This feature lets you add the station information such as name, location, call letters, and frequency.

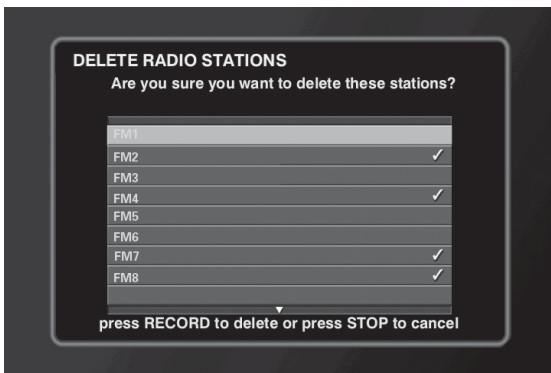
1. Press the RADIO button on your remote.
2. Press MENU (the RADIO OPTIONS MENU appears).
3. Highlight and select *new station* (a screen appears to ask what kind of station you want to add).
4. Highlight and select *am/fm* (the NEW AM/FM STATION screen appears).
5. Use the arrow button to move to the desired field (name, location, call letters, frequency), then enter the information.
6. Move to *genre* and press OK/SELECT to select the genre.
7. Move to *band* and select the radio band (am or fm).
8. When finished, press RECORD to save and add the new station.
 - To cancel and exit this screen without adding a new station, press STOP.





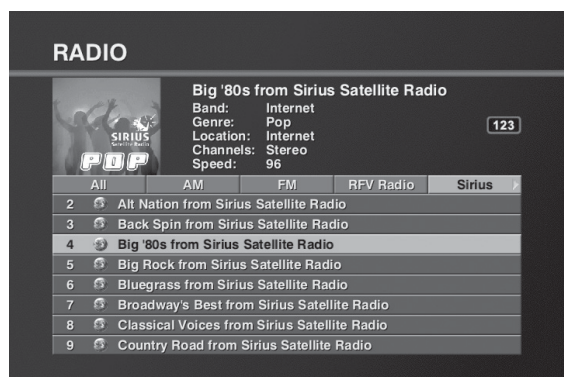
Editing an AM/FM Station

1. Press the RADIO button on your remote.
2. Use the arrow buttons to highlight the station you want to edit.
3. Press MENU (the RADIO OPTIONS MENU appears).
4. Highlight and select *edit station* (a screen appears so you can change the name for the station, if you want. You don't have to change the name of the station to edit its contents).
5. Highlight and select *continue* (the EDIT AM/FM STATION screen appears).
6. Enter the new information.
7. When finished, press RECORD to save these settings.
 - To cancel and exit this screen without editing the station information, press STOP.



Deleting a Radio Station

1. Press the RADIO button on your remote.
2. Press MENU (the RADIO OPTIONS MENU appears).
3. Highlight and select *delete stations* (the DELETE STATION screen appears).
4. Use the arrow buttons to highlight the station(s) you want to delete, and press OK/SELECT to checkmark them.
5. Press RECORD to delete the selected stations.
 - To cancel and exit this screen without deleting any stations, press STOP.



Internet Radio

Internet radio allows you to connect to unlimited radio stations on the internet, all over the world. You can find everything from one station that caters only to 80s music, to stations broadcasting only songs from one artist.

Playing Music

1. Press the RADIO button on your remote.
2. Press GUIDE to display the Radio Guide, if necessary (the Radio Guide screen appears).
3. Highlight and select the internet radio station you want to hear.



Updating Internet Radio Stations

Use this feature to automatically set the available internet radio stations.

1. Press the RADIO button on your remote.
2. Press MENU (the RADIO OPTIONS MENU appears).
3. Highlight and select *get radio info* (a screen appears to ask which station list you want to download from the OpenGlobe server).
4. Highlight and select *internet* (a confirmation screen appears).
5. To continue, highlight and select *ok* (the unit searches for all the available stations). To cancel, highlight and select *cancel*.
 - To cancel and exit this screen without autotuning any stations, press STOP.



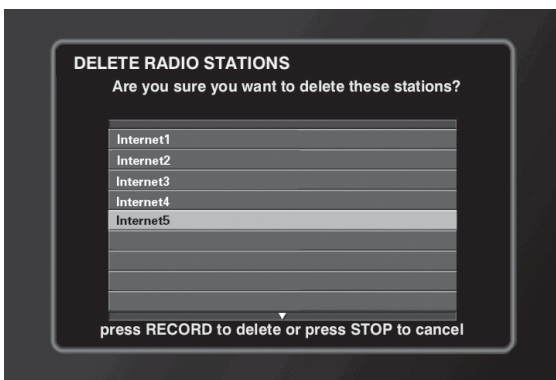
Adding a New Internet Station

If you have a favorite Internet radio station, you can add it to your Internet Radio Guide. For more information, see page 59.



Editing an Internet Station

1. Press the RADIO button on your remote.
2. Use the arrow buttons to highlight the station you want edit.
3. Press MENU (the RADIO OPTIONS MENU appears).
4. Highlight and select *edit station* (a screen appears so you can change the name for the station, if you want. You don't have to change the name of the station to edit its contents).
5. Highlight and select *continue* (the EDIT INTERNET STATION screen appears).
6. Enter the new information.
7. When finished, press RECORD to save the new settings.
 - To cancel and exit this screen without editing the station information, press STOP.

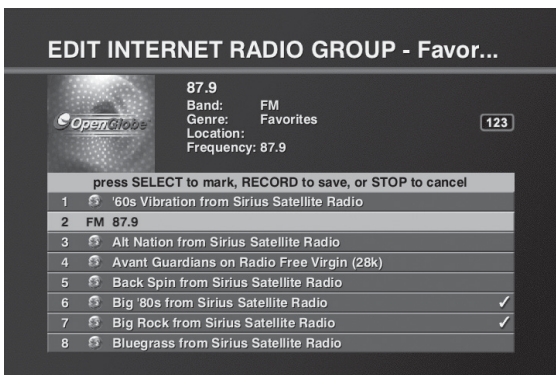


Deleting an Internet Station

1. Press the RADIO button on your remote.
2. Press MENU (the RADIO OPTIONS MENU appears).
3. Highlight and select *delete stations* (the DELETE STATION screen appears).
4. Use the arrow buttons to highlight the station(s) you want to delete, and press OK/SELECT to checkmark them.
5. Press RECORD to delete the selected stations.
 - To cancel and exit this screen without deleting any stations, press STOP.

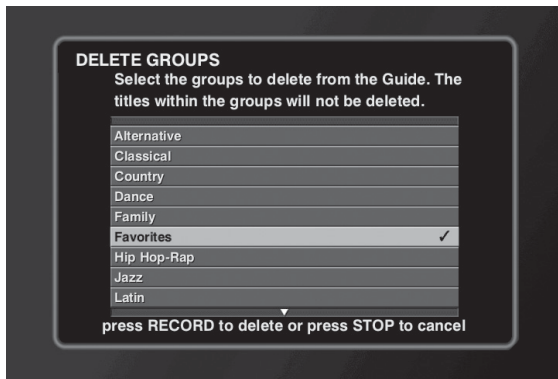
Creating a New Radio Group

1. Press the RADIO button on your remote.
2. Press MENU (the RADIO OPTIONS MENU appears).
3. Highlight and select *new group* (a screen appears so you can enter the name for the new group).
4. When you have finished, press OK/SELECT to continue (the Edit RADIO Group screen appears).
5. Use the arrow buttons to highlight what stations you want to include in the group, and press OK/SELECT to checkmark them.
6. When finished, press RECORD to save the group.



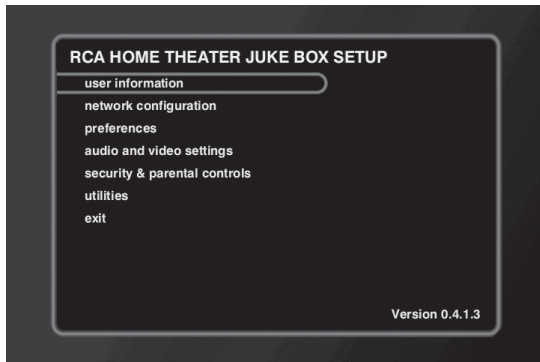
Editing a Radio Group

1. Press the RADIO button on your remote.
2. Use the arrow buttons to highlight the group you want to edit.
3. Press MENU (the MUSIC OPTIONS MENU appears).
4. Highlight and select *edit group* (a screen appears so you can change the name for the group, if you want. You don't have to change the name of the group to edit its contents).
5. Press OK/SELECT to continue (the EDIT RADIO GROUP screen appears).
6. Use the arrow buttons to highlight what stations you want to remove from the group, and press OK/SELECT to uncheck them.
7. When finished, press RECORD to save the updated group.



Deleting a Radio Group

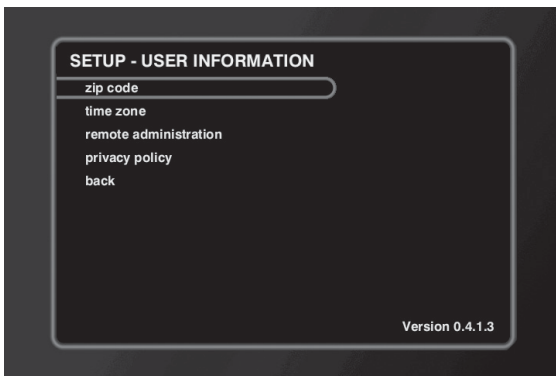
1. Press the RADIO button on your remote.
2. Press MENU (the MUSIC OPTIONS MENU appears).
3. Highlight and select *delete group* (the DELETE GROUP screen appears).
4. Use the arrow buttons to highlight the group(s) you want to delete, and press OK/SELECT to checkmark them.
5. Press RECORD to delete the selected groups.
 - To cancel and exit this screen without deleting any groups, press STOP.



Advanced Settings

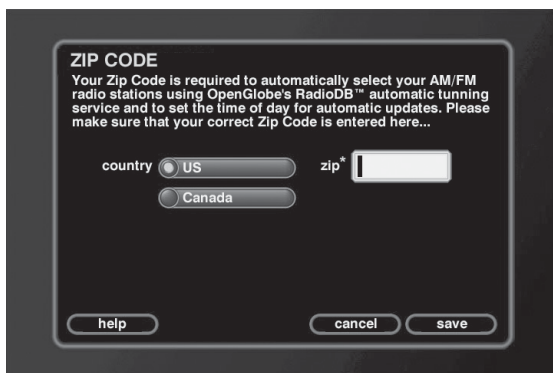
More advanced settings are available for your to customize in the Setup menu, including network configuration, preferences, and parental controls. Press the SETUP button on the remote control to bring up the menu.

Keep in mind, your unit is already set up for most normal situations. Under normal circumstances, you won't need to use these features. They are only for advanced setup.



User Information

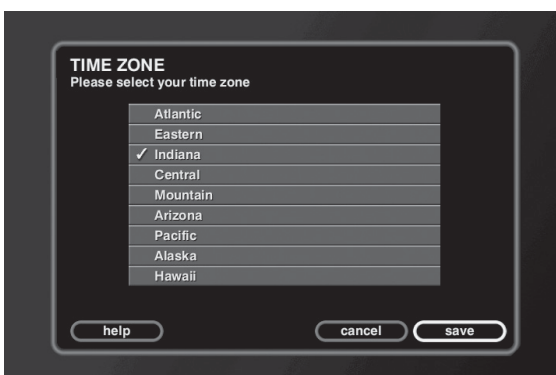
The User Information menu includes zip code, time zone, and privacy policy information.



Zip Code

Your zip code is necessary to update the time and radio autotune functions on the unit.

1. Press SETUP (the *SETUP* menu appears).
2. *User information* is already highlighted, so just press OK/SELECT (the *SETUP – USER INFORMATION* menu appears).
3. *Zip code* is already highlighted, so just press OK/SELECT (the *ZIP CODE* screen appears).
4. Press the up or down arrow button to highlight the country where you live, then press OK/SELECT.
5. Enter your zip or postal code, then highlight save and press OK/SELECT.



Time Zone

You can manually set the time zone that you live in if it needs to be changed after setup.

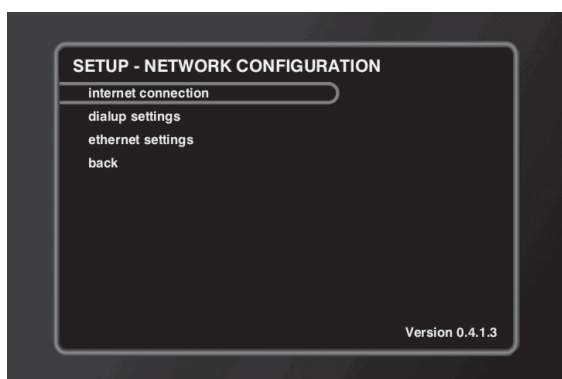
1. Press SETUP (the *SETUP* menu appears).
2. *User information* is already highlighted, so just press OK/SELECT (the *SETUP – USER INFORMATION* menu appears).
3. Press the down arrow button to highlight *time zone*, and press OK/SELECT (the *TIME ZONE* screen appears).
4. Press the up or down arrow button to highlight the time zone where you live, then press OK/SELECT.
5. When finished, highlight save and press OK/SELECT.



Privacy Policy

This screen provides all the legal disclaimers and warranty information for the product.

1. Press **SETUP** (the **SETUP** menu appears).
2. *User information* is already highlighted, so just press **OK/SELECT** (the **SETUP – USER INFORMATION** menu appears).
3. Press the down arrow button until *privacy policy* is highlighted, then press **OK/SELECT** (the **PRIVACY POLICY** screen appears).
4. Read the policy and highlight *more* to continue, then press **OK/SELECT**.
5. When finished, highlight *return* and press **OK/SELECT**.



Network Configuration

The network settings allow you to change some of the more advanced dialup and ethernet settings.



Internet Connection

Choose how you connect to the internet.

1. Press **SETUP** (the **SETUP** menu appears).
2. Press the down arrow button until *network configuration* is highlighted, then press **OK/SELECT** (the **SETUP – NETWORK CONFIGURATION** menu appears).
3. *Internet connection* is already highlighted, so just press **OK/SELECT** (the **INTERNET CONNECTION** screen appears).
4. Press the up or down arrow button to highlight your Internet connection type, then press **OK/SELECT**.
5. When finished, highlight *save* and press **OK/SELECT**.

DIALUP SETTINGS
Please verify the following information with your selected internet service provider.

login name: frogman
login password: *****
dialup number 1: 888 - 123 - 3456
dialup number 2: - - -
dialing method: ☒ tone ☐ pulse
dialing prefix: Number to dial: 1(888) 123-3456
disable call waiting: ☐

Dialup Settings

This screen allows you to select or change your dialing preferences, including dialing method, dialing prefix, and call waiting disable (you did this in the Quick Start procedure).

1. Press SETUP (the SETUP menu appears).
2. Press the down arrow button until *network configuration* is highlighted, then press OK/SELECT (the *SETUP – NETWORK CONFIGURATION* menu appears).
3. Press the down arrow button until *dialup settings* is highlighted, then press OK/SELECT (the *DIALUP SETTINGS* screen appears).
4. Enter your login information and choose the desired settings.

To enter text, press the desired number button repeatedly and scroll through the letters assigned to that button until you see the desired letter. To delete a character, press REV•DEL. To move the cursor, use the arrow buttons.

The password will appear as visible text when the field is empty AND you are entering the password. Once you move from the password field or whenever you return to this screen, the password text is hidden.

5. Highlight *test connection* and press OK/SELECT. The test results are displayed.
6. When finished, highlight *save* and press OK/SELECT.

ETHERNET SETTINGS
Enter the settings for your ethernet connection.

TCP/IP settings: ☐ dynamic ☒ static
IP address: . . .
subnet mask: . . .
gateway address: . . .
DNS 1: . . .
DNS 2: . . .
DHCP client ID:

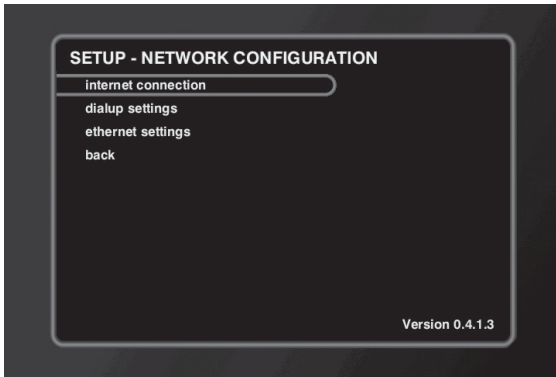
Ethernet Settings

Choose your Ethernet connection Internet Protocol method (dynamic or manual). If you choose manual (static), enter all of the IP information provided by your ISP.

1. Press SETUP (the SETUP menu appears).
2. Press the down arrow button until *network configuration* is highlighted, then press OK/SELECT (the *SETUP – NETWORK CONFIGURATION* menu appears).
3. Press the down arrow button until *ethernet settings* is highlighted, then press OK/SELECT (the *ETHERNET SETTINGS* screen appears).
4. Enter your connection type and choose the desired settings.

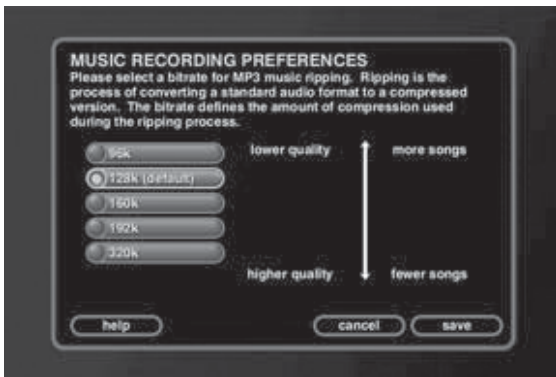
To enter text, press the desired number button repeatedly and scroll through the letters assigned to that button until you see the desired letter. To delete a character, press REV•DEL. To move the cursor, use the arrow buttons.

5. Highlight *test ethernet* and press OK/SELECT. The test results are displayed.
6. When finished, highlight *save* and press OK/SELECT.



Preferences

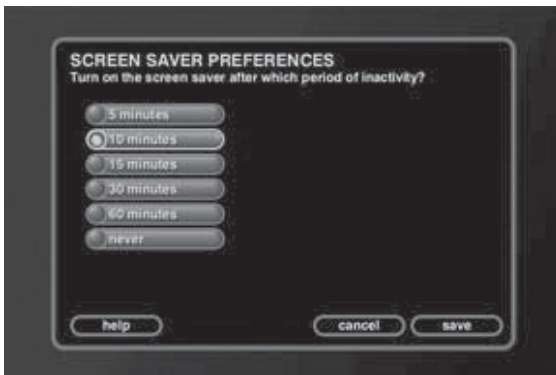
The Preferences menu includes settings for music recording, the screen saver, software updates, and DVD preferences.



Music Recording

You can choose the bitrate (quality) of your mp3s (96k, 128k, 160k, 192k, and 320k). The higher the bitrate, the better the quality of the compressed song.

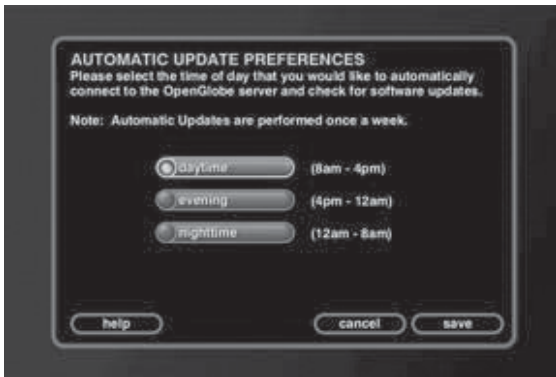
1. Press SETUP (the *SETUP* menu appears).
2. Press the down arrow button until *preferences* is highlighted, then press OK/SELECT (the *SETUP – PREFERENCES* menu appears).
3. *Music recording* is already highlighted, so just press OK/SELECT (the *MUSIC RECORDING PREFERENCES* screen appears).
4. Press the up or down arrow button to highlight the desired bitrate, then press OK/SELECT.
5. When finished, highlight *save* and press OK/SELECT.



Screen Saver

You can set the amount of time of inactivity before the screen saver comes on the screen (5 min., 10 min., 15 min., 30 min., 60 min., and never).

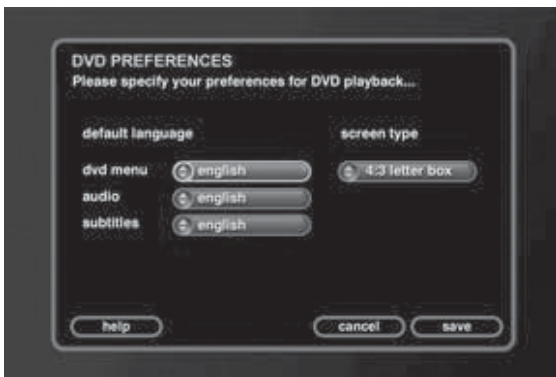
1. Press SETUP (the *SETUP* menu appears).
2. Press the down arrow button until *preferences* is highlighted, then press OK/SELECT (the *SETUP – PREFERENCES* menu appears).
3. Press the down arrow button until *screen saver* is highlighted, then press OK/SELECT (the *SCREEN SAVER PREFERENCES* screen appears).
4. Press the up or down arrow button to highlight the desired time, then press OK/SELECT.
5. When finished, highlight *save* and press OK/SELECT.



Automatic Update

This feature sets the time range for when the Music Jukebox automatically connects to the OpenGlobe server to check for software updates. You can choose daytime, evening, or nighttime settings.

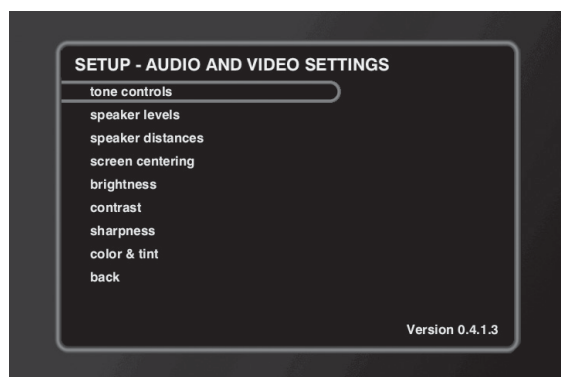
1. Press SETUP (the *SETUP* menu appears).
2. Press the down arrow button until *preferences* is highlighted, then press OK/SELECT (the *SETUP — PREFERENCES* menu appears).
3. Press the down arrow button until *automatic update* is highlighted, then press OK/SELECT (the *AUTOMATIC UPDATE PREFERENCES* screen appears).
4. Press the up or down arrow button to highlight the desired time, then press OK/SELECT.
5. When finished, highlight *save* and press OK/SELECT.



DVD

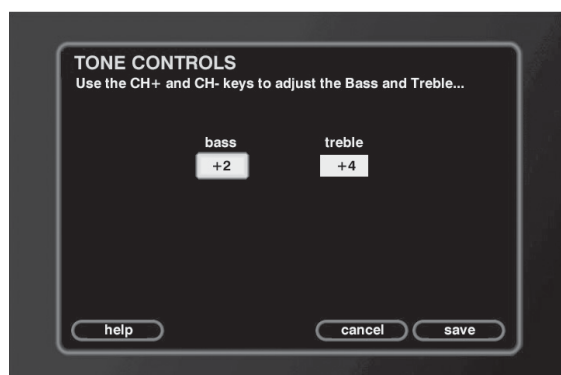
These preferences allow you to set the DVD player default languages and screen type.

1. Press SETUP (the *SETUP* menu appears).
2. Press the down arrow button until *preferences* is highlighted, then press OK/SELECT (the *SETUP — PREFERENCES* menu appears).
3. Press the down arrow button until *dvd* is highlighted, then press OK/SELECT (the *DVD PREFERENCES* screen appears).
4. Press the up or down arrow button to highlight the default language for the DVD menu, then press OK/SELECT to toggle through the options. Repeat for the other language settings.
5. Press the right arrow button to highlight the screen type, then press OK/SELECT to change it (4:3 letter box, 4:3 pan and scan, and 16:9).
6. When finished, highlight *save* and press OK/SELECT.



Audio and Video Settings

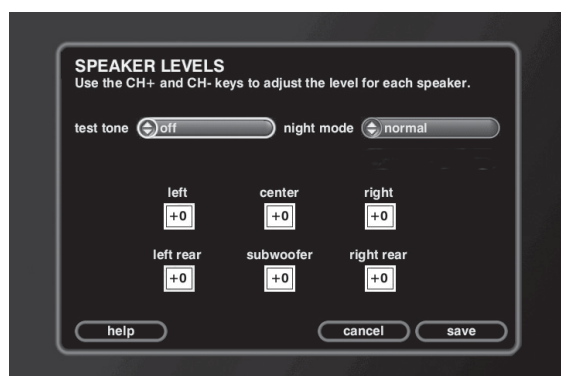
For your convenience, the audio/video settings of your Home Theater Music Jukebox can be adjusted completely through the menu system.



Tone Controls

This setting allows you to set the bass and treble of the speakers connected to your home theater system.

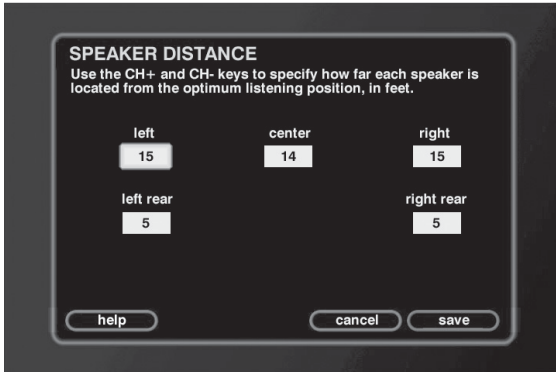
1. Press SETUP (the *SETUP* menu appears).
2. Press the down arrow button until *audio and video settings* is highlighted, then press OK/SELECT (the *SETUP – AUDIO AND VIDEO SETTINGS* menu appears).
3. *Tone controls* is already highlighted, so just press OK/SELECT (the *TONE CONTROLS* screen appears).
4. Press the right or left arrow button to highlight the bass or treble, then press CH+ or CH- to change the value (+/- 10 db).
5. When finished, highlight *save* and press OK/SELECT.



Speaker Levels

You can set the individual level of each speaker(+/- 10 db).

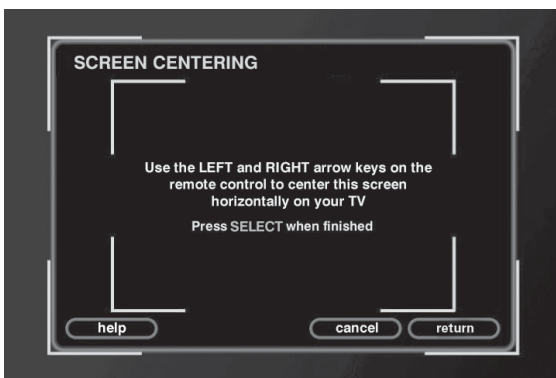
1. Press SETUP (the *SETUP* menu appears).
2. Press the down arrow button until *audio and video settings* is highlighted, then press OK/SELECT (the *SETUP – AUDIO AND VIDEO SETTINGS* menu appears).
3. Press the down arrow button until *speaker levels* is highlighted, then press OK/SELECT (the *SPEAKER LEVELS* screen appears).
4. Press the right or left arrow button to highlight the speaker you want to adjust, then press CH+ or CH- to change the value. Repeat for all the speakers.
5. To change the Dolby Digital Night Mode, press the right or left arrow button to highlight *normal*, then press OK/SELECT to toggle through the options (*Normal*, *Soft*, or *Softer*).
6. To turn the subwoofer on or off, use the arrow buttons to highlight *subwoofer*, then press OK/SELECT to toggle it on or off.
7. To test the speakers, use the arrow buttons to highlight *test tone*, then press OK/SELECT to toggle it on or off.
8. When finished, highlight *save* and press OK/SELECT.



Speaker Distance

This setting allows you to specify the distance of each speaker in relation to the center listening position (from 0-40 ft.). The default settings are: left and right, 15ft.; center, 14ft., left and right rear, 5 ft.

1. Press SETUP (the *SETUP* menu appears).
2. Press the down arrow button until *audio and video settings* is highlighted, then press OK/SELECT (the *SETUP – AUDIO AND VIDEO SETTINGS* menu appears).
3. Press the down arrow button until *speaker distance* is highlighted, then press OK/SELECT (the *SPEAKER DISTANCE* screen appears).
4. Press the arrow buttons to highlight the speaker you want to adjust, then press CH+ or CH- to change the value. Repeat for all the speakers.
5. When finished, highlight *save* and press OK/SELECT.



Screen Centering

You can set the horizontal placement so that it is centered properly on your TV.

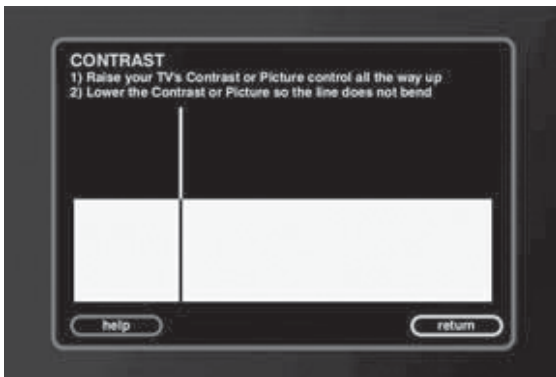
1. Press SETUP (the *SETUP* menu appears).
2. Press the down arrow button until *audio and video settings* is highlighted, then press OK/SELECT (the *SETUP – AUDIO AND VIDEO SETTINGS* menu appears).
3. Press the down arrow button until *screen centering* is highlighted, then press OK/SELECT (the *SPEAKER CENTERING* screen appears).
4. Press the right or left arrow button to center the screen, then press OK/SELECT.
5. When finished, press OK/SELECT to highlight *return*.
6. Press OK/SELECT to exit.



Brightness

This setting helps you to adjust the brightness of your TV to the optimum level.

1. Press SETUP (the *SETUP* menu appears).
2. Press the down arrow button until *audio and video settings* is highlighted, then press OK/SELECT (the *SETUP – AUDIO AND VIDEO SETTINGS* menu appears).
3. Press the down arrow button until *brightness* is highlighted, then press OK/SELECT (the *BRIGHTNESS* screen appears).
4. Follow the directions on screen to adjust the brightness to the desired level.
5. When finished, highlight *return* and press OK/SELECT.



Contrast

This setting helps you to adjust the contrast of your TV to the optimum level.

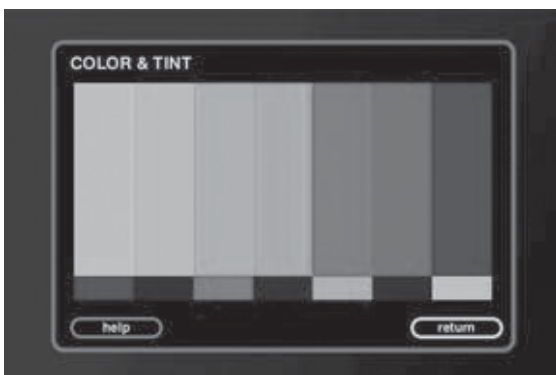
1. Press SETUP (the *SETUP* menu appears).
2. Press the down arrow button until *audio and video settings* is highlighted, then press OK/SELECT (the *SETUP – AUDIO AND VIDEO SETTINGS* menu appears).
3. Press the down arrow button until *contrast* is highlighted, then press OK/SELECT (the *CONTRAST* screen appears).
4. Follow the directions on screen to adjust the contrast to the desired level.
5. When finished, highlight *save* and press OK/SELECT.



Sharpness

This setting helps you to adjust the sharpness of your TV to the optimum level.

1. Press SETUP (the *SETUP* menu appears).
2. Press the down arrow button until *audio and video settings* is highlighted, then press OK/SELECT (the *SETUP – AUDIO AND VIDEO SETTINGS* menu appears).
3. Press the down arrow button until *sharpness* is highlighted, then press OK/SELECT (the *SHARPNESS* screen appears).
4. Follow the directions on screen to adjust the sharpness to the desired level.
5. When finished, highlight *save* and press OK/SELECT.



Color and Tint

This setting helps you to adjust the color and tint settings of your TV to the optimum level.

1. Press SETUP (the *SETUP* menu appears).
2. Press the down arrow button until *audio and video settings* is highlighted, then press OK/SELECT (the *SETUP – AUDIO AND VIDEO SETTINGS* menu appears).
3. Press the down arrow button until *color and tint* is highlighted, then press OK/SELECT (the *COLOR AND TINT* screen appears).
4. Turn your TV's color and tint controls up and down until the color bars on screen are at the point where they are not appearing to bleed together and the colors do not appear to be too bright. This will get you color and tint controls as close to the optimum settings as possible.
5. When finished, highlight *save* and press OK/SELECT.



Security and Parental Controls

The Security and Parental Controls menu includes password protection and movie ratings settings to protect you and your family by filtering undesirable content.

Password Protection

This feature allows you to set up a password to protect access to the Setup menus and will prompt you for the password when a DVD above your parental control rating is inserted.

1. Press **SETUP** (the *SETUP* menu appears).
2. Press the down arrow button until *security and parental controls* is highlighted, then press **OK/SELECT** (the *SECURITY AND PARENTAL CONTROLS* menu appears).
3. *Password protection* is already highlighted, so just press **OK/SELECT** (the *PASSWORD PROTECTION* screen appears).
4. Enter a numeric password in the *password* field, and then enter it again below in the *verify* field. (The password must be between 4 and 8 numbers and cannot contain letters).

To delete a number, press **REV•DEL**. To move the cursor, use the arrow buttons.

5. When finished, highlight *save* and press **OK/SELECT**.

Notes: If you do not want to enable password protection, leave the password blank.

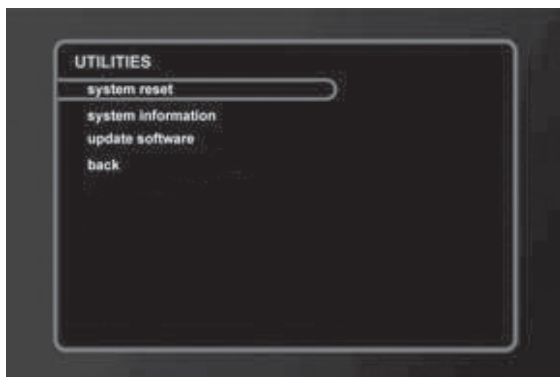
If you forget your password, enter 722. You will be able to clear the password or enter a new one.

Movie Ratings

You can choose which movies will be available, based on their ratings.

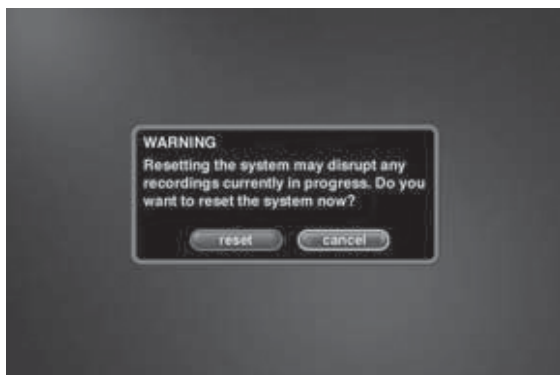
1. Press **SETUP** (the *SETUP* menu appears).
2. Press the down arrow button until *security and parental controls* is highlighted, then press **OK/SELECT** (the *SECURITY AND PARENTAL CONTROLS* menu appears).
3. Press the down arrow button until *movie ratings* is highlighted, then press **OK/SELECT** (the *MOVIE RATINGS* screen appears).
4. Press the up or down arrow button to highlight the highest rating level you want to be available, and press **OK/SELECT**. All ratings above that will be blocked.
5. When finished, highlight *save* and press **OK/SELECT**.

Important: Ratings will only be blocked if the password has been set and is active.



Utilities

The Utilities menu gives you access to more advanced features of the unit, such as updating the software and resetting the system.



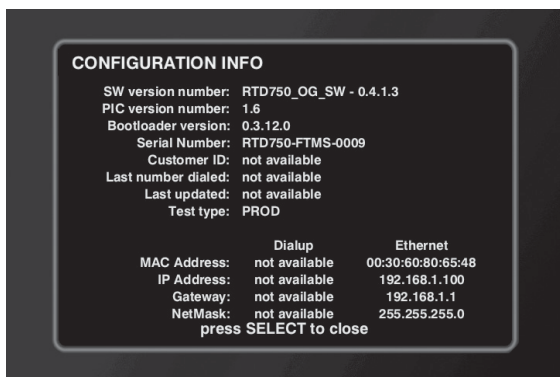
System Reset

This option lets you reset the system software.

1. Press SETUP (the *SETUP* menu appears).
2. Press the down arrow button until *utilities* is highlighted, then press OK/SELECT (the *UTILITIES* menu appears).
3. *System reset* is already highlighted, so just press OK/SELECT.

A confirmation screen appears to make sure you want to reboot the system. No information on the hard drive will be lost, but any recordings in progress are interrupted.

4. Use the arrow button to highlight *reset* and press OK/SELECT (the unit will reboot).



System Information

The System Information screen gives you important information about the Jukebox which may be helpful when contacting your service provider.

1. Press SETUP (the *SETUP* menu appears).
2. Press the down arrow button until *utilities* is highlighted, then press OK/SELECT (the *UTILITIES* menu appears).
3. Press the down arrow button until *system information* is highlighted, then press OK/SELECT (the *SYSTEM INFORMATION* screens appears).
4. When finished, press OK/SELECT.



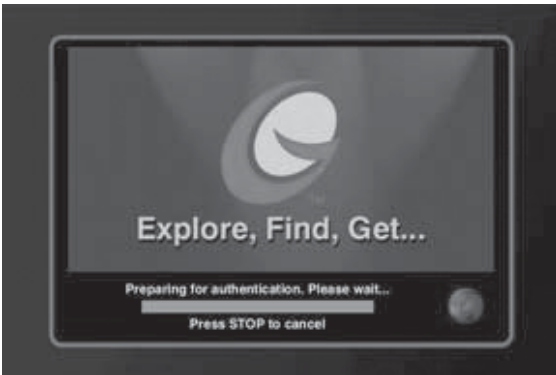
Update Software

This feature allows your Music Jukebox to connect to the OpenGlobe server for any software updates. Keep in mind this may take some time, and you won't be able to use the system during this process.

1. Press **SETUP** (the *SETUP* menu appears).
2. Press the down arrow button until *utilities* is highlighted, then press **OK/SELECT** (the *UTILITIES* menu appears).
3. Press the down arrow button until *update software* is highlighted, then press **OK/SELECT**.

A confirmation screen appears to make sure you want to update the software.

4. Use the arrow buttons to highlight *ok* and press **OK/SELECT** (the unit will begin searching for updates—this may take several minutes).



Troubleshooting

Most problems you encounter with your product can be corrected by consulting the following troubleshooting list.

Note: If you prefer, we can provide you with the name of an Authorized Service Representative who will visit your home for a fee to install your electronic entertainment system and to instruct you in its operation. For details about this service, call 1-888-206-3359. For additional assistance while using your RCA product, please visit www.rca.com/customersupport.

General Problems

Unit won't turn on

- Press the MUSIC, MOVIES, or RADIO button, then press GUIDE.
- Make sure the unit is plugged in.
- Try unplugging the AC power cord and plugging it back in.
- Check the wall receptacle (or extension cord) to make sure it is "live" by plugging in something else.
- Something might be wrong with your remote control. Press the POWER button on the front of the unit and verify that the POWER indicator is on. If it turns on, check the remote control solutions below.
- You may need to reset the system. Press and hold the POWER button on the front of the unit for several seconds. *STARTING* is displayed when it is resetting.

No sound, picture okay

- Maybe the sound is muted. Try pressing the volume up button to restore sound on the TV.
- If using a standard video, S-video, or component video connection, remember to also connect audio cables to the Music Jukebox.
- If a center channel speaker is not connected, you may need to change the surround mode to stereo or press the SURR button on the remote until the correct mode is selected.

No picture, no sound but unit is on

- Tune your TV to the appropriate Video Input Channel (see page 10).
- If you are using the component video connections (Y, Pb, Pr), make sure you also have the composite video cable connected to your TV. (Component video will not display the Music Jukebox's menus).
- You may need to reset the system. Press and hold the POWER button on the front of the unit for several seconds. *STARTING* is displayed when it is resetting.

Sound okay, picture poor

- Check connections. Make sure all of the cables are firmly connected to the jacks..

No connection after more than 5 minutes

- Make sure all connections are secure and try connecting to the OpenGlobe network again. If you still have problems connecting to the network, contact your service provider.

Unit appears to be frozen or locked up

- You may need to reset the system. Press and hold the POWER button on the front of the unit for several seconds. *STARTING* is displayed when it is resetting.

I lost my password. How do I reset it?

- Enter 722 as the password. You will be able to clear the password or enter a new one.

Unit keeps saying "Cannot Detect to Server."

- If you're not connected through Ethernet, make sure you select the modem in the setup menus (see page 12).

Remote Control Problems

- You might be in the wrong mode. To operate your Music Jukebox, press MUSIC, MOVIE, or RADIO on the remote before you press any other buttons. If you're operating the TV, press the TV button first, etc. (this remote operates most RCA, GE, and Proscan products and can be programmed for others).
- Check battery installation—the direction on the + and - on the batteries must match the information in the battery compartment cover.
- Insert new batteries in the remote and reprogram, if necessary.
- Operate the remote control at a distance of no more than 20 feet.
- Remove any obstacles between the remote and the Music Jukebox or other component. If your Music Jukebox is in an entertainment cabinet, the glass doors might obstruct the remote control from operating the unit. Open the doors.
- Maybe the remote isn't aimed directly at the component that you're trying to operate.
- You might need to reset the remote: remove batteries and press the number 1 button for at least 60 seconds. Release the 1 button, replace the batteries, and (if necessary) program the remote again.

General DVD Problems

Disc won't play

- Insert a disc with the label side facing up.
- Check the type of disc you put into the player. This player only plays DVD video discs, DVD audio discs, CDs with mp3 files, and audio CDs.
- Both the player and the disc are coded by region. If the regional codes don't match, the disc cannot be played. This player is Region No. 1.

Play starts, but then stops immediately

- The disc is dirty. Clean it.
- Condensation has formed. Allow player to dry out.

Can't advance through a movie

- You can't advance through the opening credits and warning information that appear at the beginning of movies because the disc is programmed to prohibit that action.

Operation Not Permitted appears on screen

The feature or action cannot be completed at this time for one of the following reasons:

- The disc's software restricts it.
- The disc's software doesn't support that feature (e.g., angles).
- The feature is not available at the moment.
- You've requested a title or chapter number that is out of range.

The picture is distorted

- The disc might be damaged. Try another disc.

Picture is distorted during forward and reverse scan

- It is normal for some distortion to appear while scanning.

A screen saver appears on the TV

- Your player is equipped with a screen saver that appears on the TV after your player has been idle for several minutes. To make it disappear, press STOP or CLEAR on the remote.

Subtitle and/or audio language is not the one selected from the initial setting

- If the subtitle and/or audio language does not exist on the disc, the initial settings will not be seen/heard. The disc's priority language is selected instead. Set the subtitle and/or audio language manually through the Info Display.

Chapter 6: Additional Information

The menu is displayed in a foreign language

- The Language menu (Player Menus) is set to that language. Check the DVD preferences settings in the Setup menu.

Play doesn't begin

- The rating of the title on the disc exceeds the rating limit set in the *Movie Ratings* menu.

No forward or reverse scan

- Some discs have sections that prohibit rapid scanning, or title and chapter skip.
- If you're trying to skip through the warning information and credits at the beginning of a movie, you won't be able to. This part of the movie is often programmed to prohibit skipping through it.

Desired angle cannot be changed

- Most discs don't have the multi-camera angle system, and some discs only have multiple angles during certain parts of the movie.

Picture is too tall and thin

- Change the aspect ratio of the DVD preferences settings in the Setup menu.

Picture is too short and wide

- Change the aspect ratio of the DVD preferences settings in the Setup menu.

Disc won't eject

- When you put a disc into the player, the player may take up to 15 seconds to read the disc. You won't be able to eject the disc during this time. Wait 15 seconds and try again.

Care and Cleaning

CAUTION: Unplug the unit before cleaning.

You can clean the unit as required, using a soft lint-free cloth. Be sure to occasionally dust the ventilation slots in the cabinet to help assure adequate ventilation.

Never use strong cleaning agents, such as ammonia-based cleaners, or abrasive powder. These types of cleaners will damage the unit.

Avoid placing drinks or vases with water on top of the unit. This could increase the risk of fire or shock hazard or damage to the decoder.

Handling Cautions

- Before connecting other components to this player, be sure to turn all components off.
- Don't move the player while a disc is being played. The disc may get scratched or broken, and the player's internal parts may be damaged.
- Don't put any container filled with liquid or any small metal objects on the player.
- Be careful not to put your hand into the disc tray.
- Don't place anything other than the disc in the disc tray.
- Exterior influences such as lightning and static electricity can affect normal operation of this player. If this occurs, turn the player off and on again with the ON•OFF button, or disconnect and then reconnect the AC power cord to the AC power outlet. The player will operate normally.
- Be sure to remove the disc and turn off the player after use.

Maintenance of Cabinet

For safety reasons, when cleaning the cabinet be sure to disconnect the AC power cord from the AC outlet.

- Do not use benzene, thinner, or other solvents for cleaning.
- Wipe the cabinet with a soft cloth.

Formation of Condensation

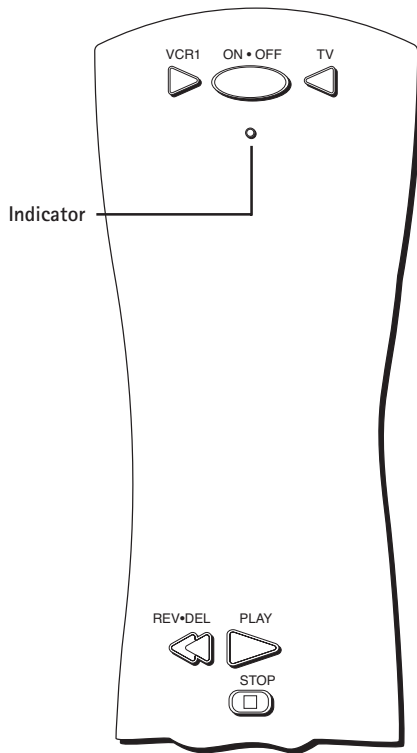
- Due to sharp changes in temperature and humidity, condensation may form if warm air comes in contact with any cold parts inside the player.
- When condensation forms inside the player, the player may not operate correctly. If this occurs, leave the player at room temperature until the inside of the player becomes dry and operational.
- If condensation forms on a disc, wipe the disc with a soft, dry cloth by moving the cloth from the center hole toward the outer edge.

Handling Discs

- Don't touch the disc's signal surfaces. Hold by the edges or by one edge and the hole in the center.
- Don't affix labels or adhesive tape to label surfaces. Don't scratch or damage the label.
- Do not use damaged (cracked or warped) discs.

Cleaning Discs

- Dirty discs can cause reduced video and audio performance. Always keep discs clean by wiping them gently with a soft cloth from the inner edge toward the outer perimeter.
- If a disc becomes very dirty, wet a soft cloth in water, wring it out well. Wipe the dirt away gently, and remove any water drops with a dry cloth.
- Do not use record-cleaning sprays or anti-static agents on discs. Also, never clean the discs with benzene, thinner, or other volatile solvents which may cause damage to the disc surface.



Use these buttons when you program the remote.

Important: The remote may not be compatible with all models of all brands of components. It may not operate all functions of the remote that came with your component.

Important

You must continue pressing the component button while you enter the code.

Let's say you have a Zenith TV. To program the universal remote to operate the TV, you would:

Press and hold the TV button while you enter the first code listed for Zenith in the TV Codes column.

Release the TV button. Press ON•OFF to see if the TV responds. If it doesn't, follow the same steps, but enter the second code for Zenith TVs instead of the first.

Note

Some of the remote's buttons might operate differently for other components, especially when you're using another component's menu system.

Programming the Remote to Operate Other Components

The universal remote can be programmed to operate most brands of remote controllable components. The remote is already programmed to operate most RCA, GE, and Proscan components.

Find Out If You Need to Program the Remote

To determine whether the universal remote needs to be programmed for your component, turn the component ON. For example, to program the remote for a TV, turn on the TV. Point the remote at the TV, and press the TV button. Then press ON•OFF or CH + (channel up) or CH - (channel down) to see if the TV responds to the remote commands. If the component does not respond, the remote needs to be programmed.

Programming the Remote

There are two ways to program the remote control: direct entry and automatic code search.

Using Direct Entry

1. Turn on the component to be programmed.
 2. Look up the brand and code number(s) for the component on the code list in this section.
 3. Point the remote at the component. Press and hold the component button you want to program on the remote (TV or AUX).
 4. Enter the 4-digit code from the remote control code list on the following pages. If the indicator flashes, you have either entered an invalid code or the button isn't programmable.
 5. Release the component button, and then press ON•OFF to see if the component responds to the command. If it doesn't, try pressing the component button and then ON•OFF again.
- If you get no response, repeat these steps using the next code listed for your brand, until the component responds to the remote commands.
 - If you try all the codes for your component brand and none work, try the automatic code search method. If automatic code search doesn't work, the remote is not compatible with your component.

Using Automatic Code Search

You can program the remote to operate each of your components. To stop the automatic code search without programming any of your components, press EXIT•CLEAR until the indicator on the remote turns off.

Note: AUX can't be programmed using the automatic code search method.

1. Turn on the component you want to operate (TV, VCR, etc.)
2. Press and hold the component button you want to program (TV, for example). While holding the component button, press and hold ON•OFF until the indicator on the remote turns on, then release both buttons.
3. Point the remote at the component. Press and release PLAY, then wait 5 seconds or until the indicator on the remote stops flashing.

At this point the remote is searching for the correct code to program. If, after 5 seconds, the component you want to operate does not turn off, press PLAY again to search the next set of codes.

Continue pressing PLAY until the component turns off or you have searched through all of the codes. There are 20 total sets of codes. If the component does not turn off after pressing PLAY 20 times, then the remote can't be programmed to operate that component.

If the component you want to control *does* turn off:

1. Press and release REVERSE, then wait 2 seconds. Repeat this step until the device turns back ON.
2. Press and hold STOP until the indicator on the remote turns off.

How to Use the Remote After You've Programmed It

Because this universal remote can control several different components (TV, VCR, Satellite, or Cable box) it uses operational modes triggered by the component buttons. For example, if you want the remote to control the TV, press the TV button to put the remote into TV mode.

1. Press the appropriate component button (TV, VCR1, AUX, etc.) to set the remote to control the component.
2. Press ON•OFF to turn the component ON or OFF.
3. Use the remote buttons that apply to that component.

Notes:

- *The remote may not be compatible with all brands and models of components. It also may not operate all functions of the remote that came with your component.*
- *If you keep pressing buttons and nothing happens, the remote is probably in the wrong mode. You must press the component button that matches the component you want to operate (i.e., if you want to operate the TV, press TV on the remote control to put the remote in TV mode.)*

Chapter 6: Additional Information

Code List

TV Codes

Abex	1172
Admiral	1001, 1173, 1211
Adventura	1174
Aiko	1016
Akai	1002
Allerion	1046
Amtron	1038
Anam National	1003, 1038, 1192, 1193, 1194
AOC	1004, 1005, 1006, 1007, 1175, 1176, 1195
Audiovox	1038
Belcor	1004
Bell & Howell	1001, 1083, 1162
Bradford	1038
Brokwood	1004
Candle	1004, 1006, 1008, 1174
Celebrity	1002
Centurion	1009
Citizen	1004, 1006, 1008, 1016, 1038, 1105, 1171, 1174, 1177
Colortyme	1004, 1006, 1010
Concerto	1004, 1006
Contec/Cony	1012, 1013, 1014, 1038
Craig	1038
Crown	1038, 1171
Curtis-Mathes	1000, 1004, 1006, 1015, 1105, 1162, 1171, 1212
CXC	1038
Daewoo	1004, 1005, 1006, 1016, 1017, 1018, 1127, 1171, 1196
Daytron	1004, 1006, 1171
Dimensia	1000
Dumont	1004, 1151
Dynatech	1178
Electronband	1002
Electrohome	1003, 1004, 1006, 1019, 1020, 1022
Emerson 1004, 1006, 1012, 1023, 1024, 1025, 1026, 1027, 1028, 1029, 1030, 1031, 1032, 1033, 1034, 1035, 1036, 1037, 1038, 1039, 1041, 1042, 1043, 1044, 1046, 1047, 1123, 1124, 1162, 1171, 1177, 1179, 1191, 1208	
Envision	1004, 1006
Fisher	1048, 1049, 1051, 1162, 1180
Fujitsu	1046
Funai	1038, 1046
Futuretec	1038
GE	1000, 1003, 1004, 1006, 1022, 1052, 1054, 1055, 1087, 1164, 1165, 1166, 1167, 1168, 1181, 1213
Gibraltar	1004, 1151
Goldstar	1004, 1005, 1006, 1012, 1019, 1056, 1057, 1058, 1155, 1156, 1171, 1172
Grundty	1038, 1046, 1171
Hallmark	1004, 1006
Harvard	1038
Hitachi ... 1004, 1006, 1012, 1013, 1014, 1059, 1060, 1061, 1135, 1136, 1137, 1138, 1139, 1140, 1141, 1142, 1143, 1144, 1145, 1146, 1148, 1150, 1179, 1198, 1199	
IMA	1038
Infinity	1062
Janeil	1174
JBL	1062
JCB	1002
JC Penney	1000, 1004, 1005, 1006, 1008, 1022, 1052, 1054, 1058, 1063, 1064, 1072, 1087, 1105, 1128, 1171, 1172, 1181, 1201
Jensen	1004, 1006
JVC	1012, 1013, 1014, 1054, 1060, 1065, 1066, 1067, 1157, 1158, 1159, 1182
Kawasho	1002, 1004, 1006
Kenwood	1004, 1006, 1019
Kloss Novabeam	1068, 1069, 1174, 1183
KTV	1038, 1070, 1171, 1177
Loewe	1062
Logik	1083
Luxman	1004, 1006
LXI	1000, 1006, 1049, 1062, 1071, 1072, 1073, 1162, 1181, 1207
Magnavox	1004, 1006, 1008, 1019, 1062, 1068, 1069, 1075, 1076, 1077, 1088, 1130, 1131, 1132, 1133, 1134, 1183, 1219, 1235
Majestic	1083
Marantz	1062
Marantz	1004, 1006, 1062, 1078
Megatron	1006, 1059
Memorex	1001, 1006, 1082, 1083, 1162
MGA	1004, 1005, 1006, 1019, 1022, 1051, 1079, 1080, 1082

Midland	1054, 1151, 1171, 1172, 1181
Minutz	1052
Mitsubishi	1004, 1005, 1006, 1019, 1022, 1051, 1079, 1080, 1081, 1082, 1125
Montgomery Ward	1083
Motorola	1003, 1173
MTC	1004, 1005, 1006, 1105
Multitech	1038
Multivision	1084
NAD	1006, 1071, 1072, 1185
NEC	1003, 1004, 1005, 1006, 1200
Nikko	1006, 1016
NTC	1016
Onwa	1038
Optimus	1185
Optonica	1095, 1173
Orion	1035, 1191
Panasonic	1003, 1054, 1062, 1170, 1214
Philco ... 1003, 1004, 1005, 1006, 1008, 1012, 1019, 1062, 1068, 1069, 1075, 1076, 1077, 1183	
Philips ... 1003, 1004, 1008, 1012, 1019, 1062, 1068, 1069, 1075, 1076, 1086, 1087, 1088, 1089	
Pilot	1004, 1171
Pioneer ... 1004, 1006, 1090, 1091, 1092, 1179, 1185	
Portland	1004, 1005, 1006, 1016, 1171
Price Club	1105
Prism	1054
ProScan	1000, 1181
Proton	1004, 1006, 1012, 1093
Pulsar	1004, 1151
Quasar	1003, 1054, 1070, 1094
Radio Shack/Realistic	1000, 1004, 1006, 1012, 1038, 1049, 1095, 1162, 1171, 1172
RCA	1000, 1003, 1004, 1005, 1006, 1007, 1019, 1096, 1098, 1099, 1100, 1101, 1102, 1103, 1129, 1179, 1181, 1187, 1188, 1190, 1202, 1203, 1215, 1233
Runco	1151
Samco	1004, 1006, 1171, 1172
Sampo	1004, 1006, 1171, 1172
Samsung 1004, 1005, 1006, 1012, 1015, 1019, 1104, 1105, 1106, 1171, 1172, 1204	
Samsux	1171
Sansui	1191
Sanyo	1004, 1048, 1049, 1080, 1107, 1108, 1162, 1169, 1180
Scotch	1006
Scott	1004, 1006, 1012, 1024, 1035, 1038, 1046
Sears ... 1000, 1004, 1006, 1013, 1014, 1019, 1046, 1048, 1049, 1051, 1066, 1071, 1072, 1109, 1110, 1162, 1180, 1181, 1189	
Sharp	1004, 1006, 1012, 1029, 1095, 1111, 1112, 1113, 1122, 1171, 1173
Shogun	1004
Signature	1001, 1083, 1115
Simpson	1008
Sony	1002, 1205, 1216, 1218
Soundesign	1004, 1006, 1008, 1038, 1046
Squareview	1189
SSS	1004, 1038
Starlite	1038
Supre-Macy	1174
Supreme	1002
Sylvania 1004, 1006, 1008, 1019, 1062, 1068, 1069, 1075, 1076, 1077, 1088, 1116, 1161, 1183	
Symphonic	1033, 1038, 1189
Tandy	1173
Tatung	1003
Technics	1054
Techwood	1004, 1006, 1054
Teknika . 1004, 1005, 1006, 1008, 1012, 1013, 1014, 1016, 1038, 1046, 1076, 1082, 1083, 1105, 1170, 1171	
Telecaption	1117
TMK	1004, 1006
Toshiba ... 1049, 1071, 1072, 1105, 1109, 1117, 1118, 1160, 1162	
Totevision	1171
Universal	1052, 1087
Victor	1066, 1182
Vidtech	1004, 1005, 1006
Viking	1174
Wards ... 1000, 1001, 1004, 1005, 1006, 1019, 1024, 1033, 1046, 1052, 1062, 1068, 1069, 1075, 1076, 1083, 1087, 1088, 1095, 1119, 1120	
Yamaha	1004, 1005, 1006, 1019
Zenith ... 1004, 1083, 1151, 1152, 1153, 1154, 1210, 1217	

VCR Codes

Admiral	2132
Adventura	2026
Aiko	2027
Aiwa	2026
Akai	2003, 2004, 2005, 2007, 2008, 2111, 2112, 2113
American High	2021
Asha	2013
Audio Dynamics	2009, 2010
Audiovox	2014
Bell & Howell	2011
Beaumarck	2013
Broksonic	2012, 2025
Calix	2014
Candle	2013, 2014, 2015, 2016, 2017, 2018, 2019
Canon	2021, 2022, 2114
Capehart	2020, 2110
Carver	2062
CCE	2027, 2061
Citizen	2013, 2014, 2015, 2016, 2017, 2018, 2019, 2027
Colortyme	2009
Colt	2061
Craig	2013, 2014, 2023, 2061
Curtis-Mathes	2000, 2009, 2013, 2016, 2018, 2021, 2022, 2024, 2115, 2131
Cybernex	2013
Daewoo	2015, 2017, 2019, 2025, 2026, 2027, 2028, 2110
Daytron	2110
DBX	2009, 2010
Dimensia	2000, 2131
Dynatech	2026
Electrohome	2014, 2029
Electrophonic	2014
Emerson 2012, 2014, 2015, 2021, 2024, 2025, 2026, 2029, 2030, 2031, 2032, 2033, 2034, 2035, 2036, 2037, 2038, 2039, 2040, 2041, 2042, 2044, 2045, 2046, 2047, 2065, 2113, 2116, 2117, 2130	
Fisher	2011, 2023, 2048, 2049, 2050, 2051, 2052, 2118
Fuji	2021, 2119
Funai	2026
Garrard	2026
GE	2000, 2001, 2013, 2021, 2022, 2053, 2115, 2120, 2131
Goldstar	2009, 2014, 2018, 2054, 2131
Gradiente	2026
Harley Davidson	2026
Harman Kardon	2009
Harwood	2061
Headquarter	2011
Hitachi	2055, 2056, 2057, 2107, 2111, 2120, 2122
Hi-Q	2023
Instant Replay	2021
JCL	2021
JC Penney	2009, 2010, 2011, 2013, 2014, 2021, 2022, 2055, 2056, 2058, 2059, 2060, 2107, 2118
Jensen	2055, 2056, 2111
JVC	2009, 2010, 2011, 2018, 2111, 2123
Kenwood	2009, 2010, 2011, 2016, 2018, 2111, 2123
KLH	2061
Kodak	2014, 2021
Lloyd	2026
Logik	2061
LXI	2014
Magnavox	2021, 2022, 2062, 2063, 2104, 2105, 2108, 2124
Magnin	2013
Marantz	2009, 2010, 2011, 2016, 2018, 2021, 2062, 2064
Marta	2014
Masushita	2021
Mei	2021
Memorex	2011, 2013, 2014, 2021, 2023, 2026, 2104, 2132
MGA	2029, 2065, 2113
MGN Technology	2013
Midland	2053
Minolta	2055, 2056, 2107
Mitsubishi	2029, 2055, 2056, 2065, 2066, 2067, 2068, 2068, 2070, 2071, 2072, 2073, 2074, 2106, 2113, 2123
Montgomery Ward	2075, 2132
Motorola	2021, 2132
MTC	2013, 2126

Multitech	2013, 2016, 2026, 2053, 2061
NEC	2009, 2010, 2011, 2016, 2018, 2064, 2076, 2078, 2079, 2111, 2123
Nikko	2014
Noblex	2013
Olympus	2021
Optimus	2014, 2132
Optonica	2096
Panasonic	2021, 2022, 2109, 2125, 2126, 2127
Pentax	2016, 2055, 2056, 2107, 2120
Pentex Research	2018
Philco	2021, 2022, 2062, 2063
Philips	2021, 2062, 2096, 2124
Pilot	2014
Pioneer	2010, 2055, 2080, 2081, 2123
Portland	2016, 2017, 2019, 2110
PROSCAN	2000, 2001, 2131
Protect	2061
Pulsar	2104
Quartz	2011
Quasar	2021, 2022, 2125
RCA	2000, 2001, 2003, 2013, 2021, 2055, 2056, 2082, 2083, 2084, 2085, 2086, 2087, 2088, 2089, 2090, 2091, 2107, 2115, 2120, 2125, 2131, 2133
Radioshack/Realistic ... 2011, 2013, 2014, 2021, 2022, 2023, 2026, 2029, 2049, 2050, 2096, 2132	
Radix	2014
Randex	2014
Ricoh	2128
Runco	2104
Samsung	2005, 2013, 2015, 2033, 2053, 2112
Sanky	2104, 2132
Sansui	2010, 2092, 2111, 2123
Sanyo	2011, 2013, 2023
Scott	2012, 2015, 2025, 2032, 2038, 2065, 2093, 2116
Sears	2011, 2014, 2021, 2023, 2048, 2049, 2050, 2051, 2055, 2056, 2107, 2118
Sharp	2017, 2029, 2094, 2095, 2096, 2097, 2131
Shintom	2004, 2056, 2061, 2098
Shogun	2013
Signature	2131
Singer	2021, 2061, 2128
Sony	2004, 2098, 2099, 2119
STS	2021, 2107
Sylvania	2021, 2022, 2026, 2062, 2063, 2065, 2124
Symphonic	2026
Tandy	2011
Tashiko	2014
Tatung	2111
TEAC	2026, 2085, 2111
Technics	2021, 2109
Teknika	2014, 2021, 2026, 2100, 2129
TMK	2013, 2024, 2047
Toshiba	2015, 2049, 2051, 2055, 2065, 2093, 2116
Totevision	2013, 2014
Unitech	2013
Vector Research	2009, 2010, 2015, 2016
Victor	2010
Video Concepts	2009, 2010, 2015, 2016, 2113
Videosonic	2013
Wards	2013, 2014, 2015, 2021, 2023, 2026, 2029, 2055, 2056, 2061, 2096, 2101, 2102, 2103, 2107, 2116, 2132
XR-1000	2021, 2026, 2061
Yamaha	2009, 2010, 2011, 2018, 2111
Zenith	2004, 2098, 2104, 2119, 2128

continued on next page

Cable Box Codes

ABC	5002, 5003, 5004, 5005, 5006, 5007, 5053
Antronix	5008, 5009
Archer	5008, 5009, 5010, 5011
Cabletenna	5008
Cableview	5008
Century	5011
Citizen	5011
Colour Voice	5012, 5013
Comtronics	5014, 5015
Contec	5016
Eastern	5017
Garrard	5011
GC Electronics	5009
Gemini	5018, 5019, 5049
General Instrument	5003
Hamlin	5020, 5021, 5022, 5035, 5045
Hitachi	5003
Hytex	5002
Jasco	5011
Jerrold	5003, 5005, 5007, 5018, 5023, 5024, 5046, 5053
Magnavox	5025
Memorex	5026
Movie Time	5002, 5027, 5028
NSC	5002, 5027, 5028
Oak	5002, 5016, 5029
Panasonic	5048, 5052
Paragon	5026
Philips	5011, 5012, 5013, 5019, 5025, 5030, 5031, 5032
Pioneer	5033, 5034
Pulsar	5026
RCA	5047, 5049, 5052
Realistic	5009, 5049
Regal	5022, 5035
Regency	5017
Rembrandt	5003
Runco	5026
Samsung	5014, 5034
Scientific Atlanta	5006, 5036, 5037, 5038
Signal	5014, 5018
Signature	5003
SL Marx	5014

Sprucer	5052
Starcom	5007, 5018, 5053
Stargate	5014, 5018
Starquest	5018
Tandy	5040
Teleview	5014
Tocom	5004, 5023, 5041
Toshiba	5026
Tusa	5018
TV86	5027
Unika	5008, 5009, 5011
United Artists	5002
United Cable	5053
Universal	5008, 5009, 5010, 5011
Videoway	5044
Viewstar	5015, 5025, 5027, 5040
Zenith	5026, 5050, 5051

Satellite Receiver Codes

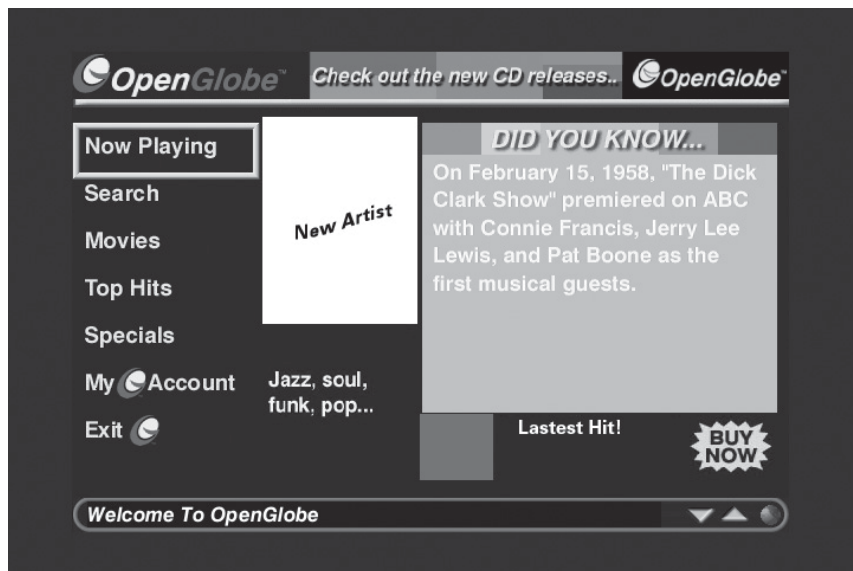
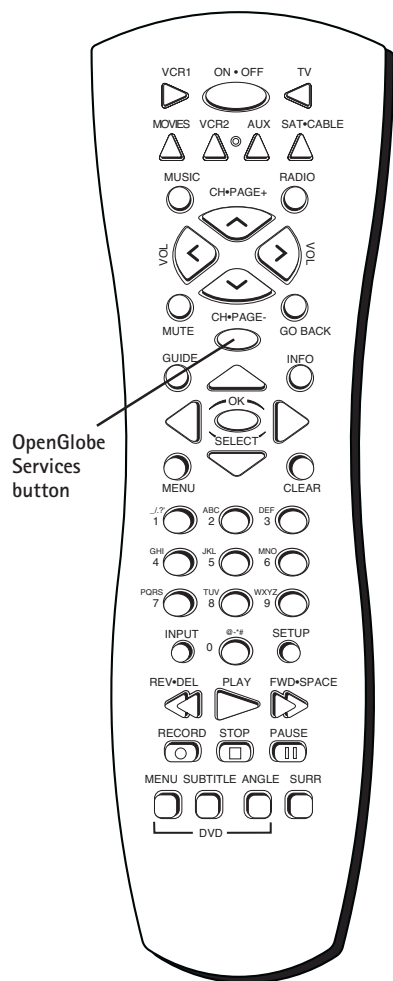
Alphastar	5079
Chapparral	5056, 5057
Dishnet	5078
Drake	5058, 5059
Echostar	5089
GE	5000, 5001
General Instruments	5060, 5061, 5062
Hitachi	5083, 5084
Hughes	5077, 5090
JVC	5082
Panasonic	5075
Philips	5085
Primestar	5076
PROSCAN	5000, 5001
RCA	5000, 5001, 5071, 5080, 5081
Realistic	5063
Sony	5072
STS1	5064
STS2	5065
STS3	5066
STS4	5067
Toshiba	5068, 5073
Uniden	5086

Chapter 6: Additional Information

More from OpenGlobe Services

While enjoying Music, Radio, or Movies, push the OpenGlobe button to take you to a specialized information area for you to explore your favorite artists and actors. You can also find similar artists or movies, top hits, artist bios, and purchase new CDs and DVDs to be shipped right to your home. The available services are always evolving, so check back often.

With your RCA Home Theater Music Jukebox and all OpenGlobe has to offer, you have the key to enhanced entertainment information and services.



Compatible Optional USB Keyboards

The following models of USB keyboards are fully compatible with your Home Theater Music Jukebox. Check with your local retailer for availability.

- Logitech Cordless Keyboard, model #967090-0403
- Logitech Internet Navigator Keyboard, model # 967093-0403
- Belkin USB Classic Keyboard, model # F8E206-USB
- Compaq USB Internet Keyboard, model # 260725-001

Adding a New Internet Station

Your Home Theater Music Jukebox is able to deliver a variety of Internet radio station programming through its connection to the Internet. Escient's OpenGlobe Internet radio service provides a large variety of stations including Sirius Satellite Radio (broadband users only), Radio Free Virgin, and various other stations from across the country. These stations can be selected for playback in the Radio Guide.

In order to increase your listening enjoyment, the Music Jukebox also allows you to add new Internet Radio stations to the Radio Guide for playback. The procedure below will give you some examples of how to find new stations and add them to the Radio Guide.

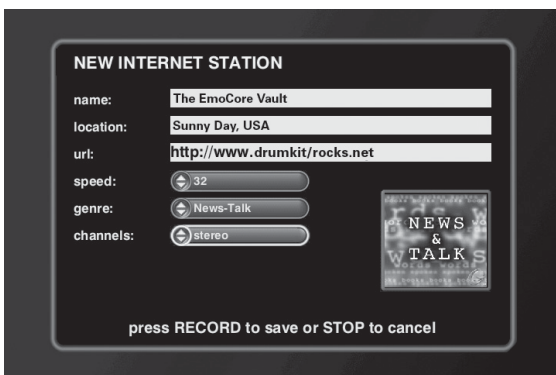
Locating Stations

Internet Radio is a fairly new form of radio broadcasting which all terrestrial radio stations have not yet adopted. Please keep in mind that the station you are interested in may not broadcast over the Internet, or it may use a proprietary interface only accessible from a PC. You can locate Internet radio stations using various Internet Radio web sites that can be accessed using your Internet Browser on a PC. One example is Radio-Locator. Simply go to <http://www.radio-locator.com> and type in the station call letters, zip code, State code, Genre, or Country in the fields provided, and press GO. The radio locator will return information about the station or the area that you requested. Click on the (i) icon in order to find the detailed information about the specific station. From the Information page, the radio locator will list an Internet address for the Audio Stream location. If this address ends with a .asx or .asf file extension, then the Music Jukebox may be able to playback this station.

Follow the steps below to enter the information you found and start enjoying your favorite Internet radio stations!



1. Press the RADIO button on your remote.
2. Press MENU (the RADIO OPTIONS MENU appears).
3. Highlight and select *new station* (a screen appears to ask what kind of station you want to add).
4. Highlight and select internet (the NEW INTERNET STATION screen appears).
5. Use the arrow button to move to the desired field (name, location, url, speed), then enter the information.
6. Move to *genre* and select the genre.
7. Move to *channels* and select the channel (stereo or mono).
8. When finished, press RECORD to save and add the new station.



Chapter 6: Additional Information

FCC and Industry Canada Information

This device complies with Part 15 of the FCC Rules. Operation is subject to the following two conditions: (1) this device may not cause harmful interference, and (2) this device must accept any interference received, including interference that may cause undesired operation.

This equipment has been tested and found to comply with the limits for a Class B digital device, pursuant to Part 15 of the FCC Rules. These limits are designed to provide reasonable protection against harmful interference in a residential installation. This equipment generates, uses, and can radiate radio frequency energy and, if not installed and used in accordance with the instructions, may cause harmful interference to radio communications. However there is no guarantee that interference will not occur in a particular installation. If this equipment does cause harmful interference to radio or television reception, which can be determined by turning the equipment off and on, the user is encouraged to try and correct the interference by one or more of the following measures:

- Reorient or relocate the receiving antenna.
- Increase the separation between the equipment and receiver.
- Connect this equipment into an outlet on a circuit different from that to which the receiver is connected.
- Consult your service provider or an experienced radio/TV technician for help.

FCC regulations state that unauthorized changes or modifications to this equipment may void the user's authority to operate it.

This Class B digital apparatus meets all requirements of the Canadian Interference Causing Equipment Regulations.

Additional FCC Information

This equipment complies with Part 68 of the FCC rules and the requirements adopted by the ACTA. On the back or bottom of this equipment is a label that contains, among other information, a product identifier in the format US:AAAEQ##TXXXX or an FCC registration number. If requested, this number must be provided to the telephone company.

The Ringer Equivalence Number (REN) is used to determine the number of devices that may be connected to a telephone line. Excessive RENs on a telephone line may result in the devices not ringing in response to an incoming call. In most but not all areas, the sum of the RENs should not exceed five (5.0). To be certain of the number of devices that may be connected to a line, as determined by the total RENs, contact the local telephone company. For products approved after July 23, 2001, the REN for this product is part of the product identifier that has the format US:AAAEQ##TXXXX. The digits represented by the ## are the REN without a decimal point (e.g., 03 is a REN of .3). For earlier products, the REN is separately shown on the label.

A plug and jack used to connect this equipment to the premises wiring and telephone network must comply with the applicable FCC part 68 rules and requirements adopted by the ACTA. A compliant telephone cord and modular RJ11 plug is provided with this product. It is designed to be connected to a compatible modular jack that is also compliant. See installation instructions for details.

This equipment uses one or more of the following plugs and jacks:

USOC RJ11, USOC RJ14.

If this equipment causes harm to the telephone network, the telephone company will notify you in advance that temporary discontinuance of service may be required. But if advance notice isn't practical, the telephone company will notify the customer as soon as possible. Also, you will be advised of your right to file a complaint with the FCC if you believe it is necessary.

The telephone company may make changes in its facilities, equipment, operations or procedures that could affect the operation of the equipment. If this happens the telephone company will provide advance notice in order for you to make necessary modifications to maintain uninterrupted service.

Connection to party line service is subject to state tariffs. Contact the state public utility commission, public service commission or corporation commission for information.

If your home has specially wired alarm equipment connected to the telephone line, ensure that the installation of this equipment does not disable your alarm equipment. If you have questions about what will disable alarm equipment, consult your telephone company or qualified installer.

If trouble is experienced with this equipment, for repair or warranty information, please refer to the warranty section of this manual. If the equipment is causing harm to the telephone network, the telephone company may request that you disconnect the equipment until the problem is resolved.

This product meets the applicable Industry Canada technical specifications. The term "IC" before the certification / registration number only signifies that the Industry Canada technical specifications were met.

Chapter 6: Additional Information

Limited Warranty

What your warranty covers:

- Defects in materials or workmanship.

For how long after your purchase:

- One year from date of purchase – Unit exchange, which includes parts and labor.
- The warranty for rental units begins with the first rental or 45 days from date of shipment to the rental firm, whichever comes first.

What we will do:

- Exchange the defective unit for a new, or at our option, refurbished unit.

How you get service:

- Call 1-580-634-0366 and have your unit's date of purchase and model/serial number ready. The model/serial number information is on the back of your unit.
- A representative will troubleshoot your problem over the phone.
- If the representative determines that you should receive a replacement unit you will be provided with a Service Request (SR) number. No returns will be accepted without the SR number.
- Proof of purchase in the form of a bill of sale or receipted invoice which is evidence that the product is within the warranty period must be presented to obtain warranty service. For rental firms, proof of first rental is also required.

Option I:

1. Provide your Discover, MasterCard or Visa account number and expiration date to your phone representative. This is for security purposes only and your account will not be charged at this time.
2. We will send you a replacement unit.
3. If you return the defective unit to us within 14 days from the date you were provided a SR number, only items not covered by warranty will be charged to your account. If your unit is not received within 14 days, the suggested retail value of the unit will be charged to your credit card. This amount will be credited, less a handling fee, if the unit is subsequently received.
4. Ship your defective unit back to us, less accessories, using the replacement unit's carton. Shipping instructions will be included in the carton along with your SR number which will allow you to easily ship the unit back to us. Make sure you insure your shipment in case of damage or loss. Include with the shipment:
 - Evidence of purchase date such as a bill of sale.
 - A brief note describing your unit's problem.
 - Your name, address and phone number.

Option II:

1. For a fee, we will send a replacement unit to our exchange point.
2. The exchange location will notify you of its arrival.
3. Take your unit and evidence of purchase date, such as a bill of sale, to the exchange location and you will be provided the new or refurbished unit. Please retain all accessories such as the remote control hand unit.
4. If the repairs are covered by your warranty, you will not be billed.

Thomson assumes no responsibility for warranty shipments from the customer to the factory if not shipped in the manner prescribed by Thomson.

To receive a replacement unit after we have received your unit:

- Write the SR number on the outside of the carton used to return the unit. Make sure you insure your shipment in case of damage or loss.
- Carefully pack the unit using the original box and packing material if possible. Please retain all accessories that were included with your unit such as the remote control hand unit.

- Include with the shipment:
 1. Evidence of purchase date such as a bill of sale.
 2. A brief note describing your unit's problem.
 3. Your name, address and phone number.
- The representative will advise the address to mail a cashier's check or money order for payment if there are any out of warranty labor or parts charges, and you elect not to use your credit card.
- After we receive your product, a new or refurbished unit will be shipped to you.

What your warranty does not cover:

- Acts of nature, such as but not limited to lightning damage.
- Adjustment of customer controls.
- Damage from misuse or neglect.
- A unit that has been modified or incorporated into other products or is used for institutional or other commercial purposes.
- Batteries.
- Units purchased, serviced or operated outside the U.S.A.
- Loss of programming. It is recommended that you retain all original CD software that was loaded in the unit.
- Installation.
- Shipping damage if the unit was not packed and shipped in the manner prescribed by Thomson.
- Storage fees may be charged by the exchange point if you fail to pick up the replacement unit in a timely manner.

Product Registration:

- Please complete and the online Product Registration on RCA.com/productregistration or complete and mail the Product Registration Card packed with your product. It will make it easier to contact you should it ever be necessary. The return of the card is not required for warranty coverage.

Limitation of Warranty:

- THE WARRANTY STATED ABOVE IS THE ONLY WARRANTY APPLICABLE TO THIS PRODUCT. ALL OTHER WARRANTIES, EXPRESS OR IMPLIED (INCLUDING ALL IMPLIED WARRANTIES OF MERCHANTABILITY OR FITNESS FOR A PARTICULAR PURPOSE) ARE HEREBY DISCLAIMED. NO VERBAL OR WRITTEN INFORMATION GIVEN BY THOMSON, ITS AGENTS OR EMPLOYEES SHALL CREATE A WARRANTY OR IN ANY WAY INCREASE THE SCOPE OF THIS WARRANTY.
- REPAIR OR REPLACEMENT AS PROVIDED UNDER THIS WARRANTY IS THE EXCLUSIVE REMEDY OF THE CONSUMER. THOMSON SHALL NOT BE LIABLE FOR INCIDENTAL OR CONSEQUENTIAL DAMAGES RESULTING FROM THE USE OF THIS PRODUCT OR ARISING OUT OF ANY BREACH OF ANY EXPRESS OR IMPLIED WARRANTY ON THIS PRODUCT. THIS DISCLAIMER OF WARRANTIES AND LIMITED WARRANTY ARE GOVERNED BY THE LAWS OF THE STATE OF INDIANA. EXCEPT TO THE EXTENT PROHIBITED BY APPLICABLE LAW, ANY IMPLIED WARRANTY OF MERCHANTABILITY OR FITNESS FOR A PARTICULAR PURPOSE ON THIS PRODUCT IS LIMITED TO THE APPLICABLE WARRANTY PERIOD SET FORTH ABOVE.

How state law relates to warranty:

- Some states do not allow the exclusion nor limitation of incidental or consequential damages, or limitations on how long an implied warranty lasts, so the above limitations or exclusions may not apply to you.
- This warranty gives you specific legal rights, and you also may have other rights that vary from state to state.

If you purchased your product outside the United States:

- This warranty does not apply. See your dealer for warranty information.

This page intentionally left blank.

This page intentionally left blank.

Visit the RCA website at www.rca.com

Please do not send any products to the Indianapolis address listed in this manual or on the carton. This will only add delays in service for your product.

Thomson Inc.
10330 North Meridian Street
Indianapolis, IN 46290

©2003 Thomson Inc.
Trademark(s)® Registered
Marca(s) Registrada(s)
Printed in China
TOCOM 1606377A

